

C.5 International Comparisons

Sources: Eurostat, OECD, IMF, MoF estimates

Table C.5.1: GDP p.c. – using current purchasing power parities

		2005	2006	2007	2008	2009	2010	2011	2012	2013	2014
									<i>Prelim.</i>	<i>Forecast</i>	<i>Forecast</i>
Slovenia	<i>PPS</i>	19 700	20 700	22 100	22 700	20 300	20 500	21 000	20 900	20 700	21 000
	<i>EA12=100</i>	79	79	80	83	79	77	77	75	74	73
Czech Republic	<i>PPS</i>	17 800	18 900	20 700	20 200	19 400	19 500	20 100	20 300	20 400	21 000
	<i>EA12=100</i>	72	73	75	74	75	73	73	73	73	73
Slovakia	<i>PPS</i>	13 500	15 000	16 900	18 100	17 100	17 900	18 500	19 100	19 500	20 200
	<i>EA12=100</i>	55	57	62	66	66	67	67	69	70	71
Portugal	<i>PPS</i>	17 900	18 700	19 600	19 500	18 800	19 700	19 600	19 200	19 100	19 500
	<i>EA12=100</i>	72	72	72	71	73	74	71	69	68	68
Lithuania	<i>PPS</i>	12 300	13 600	15 500	16 100	13 600	15 000	16 700	17 900	18 900	19 900
	<i>EA12=100</i>	49	52	56	59	53	56	61	64	67	69
Estonia	<i>PPS</i>	13 800	15 600	17 500	17 200	15 000	15 500	17 200	18 000	18 800	19 800
	<i>EA12=100</i>	56	60	64	63	58	58	63	65	67	69
Greece	<i>PPS</i>	20 400	21 800	22 500	23 100	22 100	21 200	19 900	19 200	18 700	19 100
	<i>EA12=100</i>	82	84	82	84	86	79	72	69	67	67
Poland	<i>PPS</i>	11 500	12 300	13 600	14 100	14 200	15 300	16 200	16 800	17 300	17 900
	<i>EA12=100</i>	46	47	49	51	55	57	59	61	62	63
Hungary	<i>PPS</i>	14 200	14 900	15 400	16 000	15 300	15 800	16 300	16 700	17 000	17 500
	<i>EA12=100</i>	57	57	56	58	60	59	60	60	61	61
Latvia	<i>PPS</i>	11 100	12 500	14 300	14 600	12 700	13 200	14 700	15 900	16 900	17 900
	<i>EA12=100</i>	45	48	52	53	49	49	54	57	60	63
Croatia	<i>PPS</i>	12 800	13 700	15 200	15 800	14 500	14 300	15 200	15 600	16 000	16 600
	<i>EA12=100</i>	52	52	55	58	56	53	56	56	57	58

Graph C.5.1: GDP p.c. – using current purchasing power parities

EA12=100

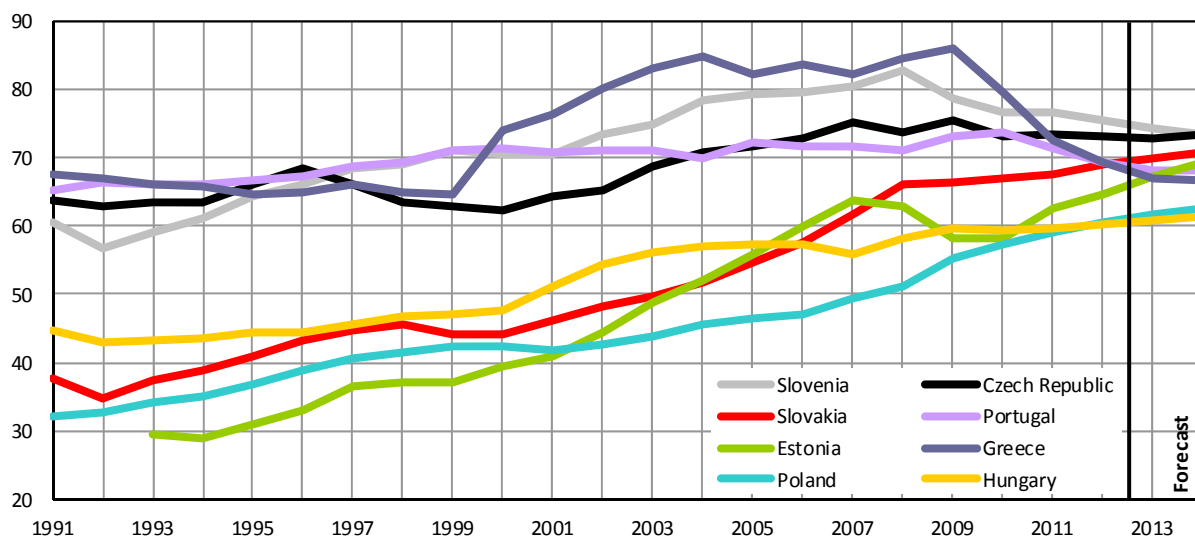
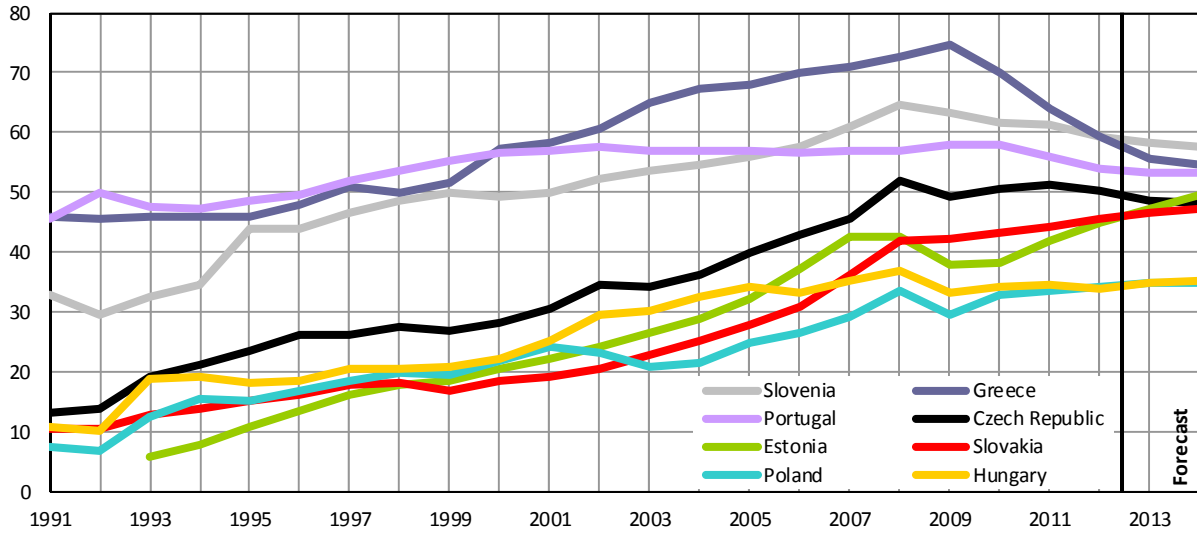


Table C.5.2: GDP p.c. – using current exchange rates

		2005	2006	2007	2008	2009	2010	2011	2012	2013	2014		
											<i>Prelim.</i>	<i>Forecast</i>	<i>Forecast</i>
Slovenia	<i>EUR</i>	14 400	15 500	17 100	18 400	17 300	17 300	17 600	17 200	17 000	17 100		
	<i>EA12=100</i>	56	58	61	65	63	62	61	59	58	57		
	<i>Comparative price level EA12=100</i>	71	73	76	78	80	80	80	80	79	79	78	
Greece	<i>EUR</i>	17 400	18 700	19 900	20 800	20 500	19 600	18 500	17 200	16 300	16 300		
	<i>EA12=100</i>	68	70	71	73	75	70	64	59	56	55		
	<i>Comparative price level EA12=100</i>	83	84	87	86	87	88	88	86	83	82		
Portugal	<i>EUR</i>	14 600	15 200	16 000	16 200	15 900	16 300	16 100	15 600	15 600	15 900		
	<i>EA12=100</i>	57	57	57	57	58	58	56	54	53	53		
	<i>Comparative price level EA12=100</i>	79	79	80	80	79	78	78	78	78	78		
Czech Republic	<i>EUR</i>	10 200	11 500	12 800	14 800	13 500	14 300	14 800	14 600	14 200	14 400		
	<i>EA12=100</i>	40	43	46	52	49	51	51	50	49	48		
	<i>Comparative price level EA12=100</i>	56	59	61	70	66	70	70	69	67	66		
Estonia	<i>EUR</i>	8 300	10 000	12 000	12 100	10 400	10 700	12 100	13 000	13 800	14 800		
	<i>EA12=100</i>	32	37	43	42	38	38	42	45	47	50		
	<i>Comparative price level EA12=100</i>	58	62	67	68	65	66	67	70	71	72		
Slovakia	<i>EUR</i>	7 100	8 300	10 200	11 900	11 600	12 100	12 800	13 200	13 600	14 100		
	<i>EA12=100</i>	28	31	36	42	42	43	44	46	47	47		
	<i>Comparative price level EA12=100</i>	51	54	59	63	64	65	66	66	67	67		
Lithuania	<i>EUR</i>	6 300	7 400	8 900	10 100	8 400	8 900	10 200	11 000	11 700	12 600		
	<i>EA12=100</i>	25	28	32	36	31	32	36	38	40	42		
	<i>Comparative price level EA12=100</i>	50	53	56	61	58	57	58	59	60	61		
Latvia	<i>EUR</i>	5 800	7 200	9 600	10 500	8 600	8 600	9 800	10 900	11 700	12 500		
	<i>EA12=100</i>	23	27	34	37	32	31	34	38	40	42		
	<i>Comparative price level EA12=100</i>	50	56	65	69	64	62	64	66	66	67		
Croatia	<i>EUR</i>	8 100	8 900	9 800	10 700	10 100	10 100	10 400	10 300	10 500	10 900		
	<i>EA12=100</i>	32	33	35	38	37	36	36	36	36	36		
	<i>Comparative price level EA12=100</i>	61	64	63	65	65	67	65	63	63	63		
Poland	<i>EUR</i>	6 400	7 100	8 200	9 500	8 100	9 200	9 600	9 900	10 200	10 400		
	<i>EA12=100</i>	25	27	29	33	30	33	33	34	35	35		
	<i>Comparative price level EA12=100</i>	54	57	59	65	54	57	57	56	56	56		
Hungary	<i>EUR</i>	8 800	8 900	9 900	10 500	9 100	9 600	9 900	9 800	10 100	10 500		
	<i>EA12=100</i>	34	33	35	37	33	34	34	34	35	35		
	<i>Comparative price level EA12=100</i>	60	58	63	63	56	58	58	56	57	58		

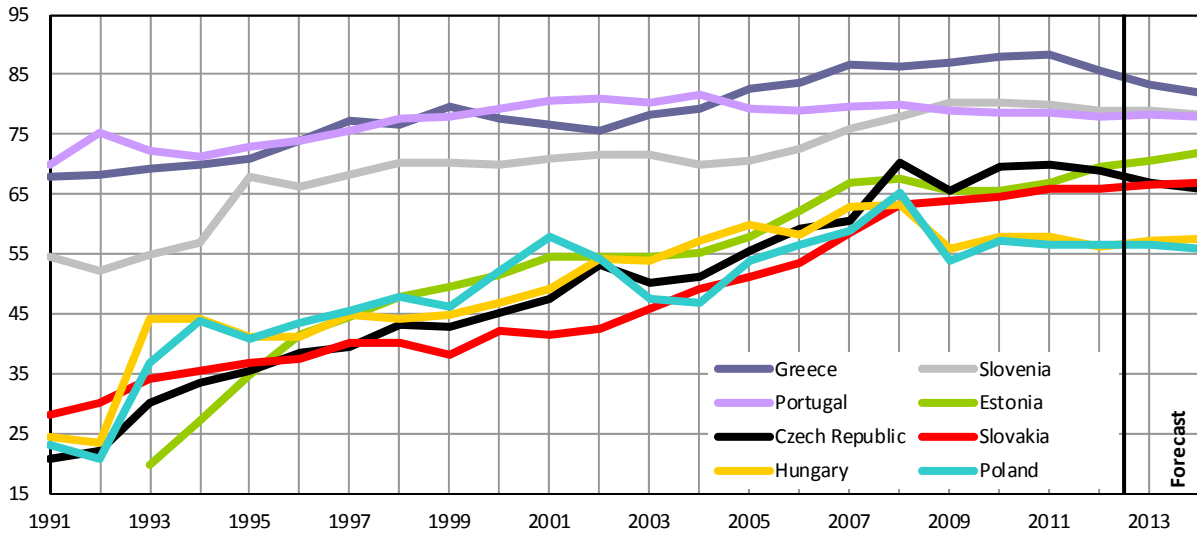
Graph C.5.2: GDP p.c. – using current exchange rates

EA12=100



Graph C.5.3: Index of Comparative Price Level of GDP p.c.

EA12=100



Graph C.5.4: Change in real GDP per capita during 2008–2012

growth in %

