

## C.3 Labour Market

Table C.3.1: Labour Market – yearly

		2008	2009	2010	2011	2012	2013	2014	2015	2016	2017
								Forecast	Forecast	Outlook	Outlook
<b>Labour Force Survey</b>											
<b>Employment</b>	<i>av. in thous.persons</i>	<b>5 002</b>	<b>4 934</b>	<b>4 885</b>	<b>4 872</b>	<b>4 890</b>	<b>4 937</b>	<b>4 958</b>	<b>4 973</b>	<b>4 982</b>	<b>4 991</b>
	<i>growth in %</i>	1.6	-1.4	-1.0	0.4	0.4	1.0	0.4	0.3	0.2	0.2
<b>– employees</b>	<i>av. in thous.persons</i>	<b>4 196</b>	<b>4 107</b>	<b>4 019</b>	<b>3 993</b>	<b>3 990</b>	<b>4 055</b>	<b>4 057</b>	<b>4 067</b>	<b>4 075</b>	<b>4 083</b>
	<i>growth in %</i>	1.7	-2.1	-2.1	0.0	-0.1	1.6	0.0	0.3	0.2	0.2
<b>– entrepreneurs and self-employed</b>	<i>av. in thous.persons</i>	<b>807</b>	<b>827</b>	<b>866</b>	<b>880</b>	<b>901</b>	<b>882</b>	<b>901</b>	<b>906</b>	<b>907</b>	<b>908</b>
	<i>growth in %</i>	1.2	2.5	4.7	2.0	2.4	-2.1	2.1	0.6	0.1	0.1
<b>Unemployment</b>	<i>av. in thous.persons</i>	<b>230</b>	<b>352</b>	<b>384</b>	<b>351</b>	<b>367</b>	<b>369</b>	<b>333</b>	<b>320</b>	<b>310</b>	<b>304</b>
<b>Unemployment rate</b>	<i>average in per cent</i>	<b>4.4</b>	<b>6.7</b>	<b>7.3</b>	<b>6.7</b>	<b>7.0</b>	<b>7.0</b>	<b>6.3</b>	<b>6.1</b>	<b>5.9</b>	<b>5.7</b>
<b>Labour force</b>	<i>av. in thous.persons</i>	<b>5 232</b>	<b>5 286</b>	<b>5 269</b>	<b>5 223</b>	<b>5 257</b>	<b>5 306</b>	<b>5 291</b>	<b>5 294</b>	<b>5 293</b>	<b>5 295</b>
	<i>growth in %</i>	0.7	1.0	-0.3	-0.2	0.7	0.9	-0.3	0.1	0.0	0.1
<b>Population aged 15–64</b>	<i>av. in thous.persons</i>	<b>7 410</b>	<b>7 431</b>	<b>7 399</b>	<b>7 295</b>	<b>7 229</b>	<b>7 154</b>	<b>7 081</b>	<b>7 017</b>	<b>6 952</b>	<b>6 889</b>
	<i>growth in %</i>	0.9	0.3	-0.4	-0.7	-0.9	-1.0	-1.0	-0.9	-0.9	-0.9
<b>Employment/Pop. 15–64</b>	<i>average in per cent</i>	<b>67.5</b>	<b>66.4</b>	<b>66.0</b>	<b>66.8</b>	<b>67.6</b>	<b>69.0</b>	<b>70.0</b>	<b>70.9</b>	<b>71.7</b>	<b>72.4</b>
<b>Employment rate 15–64<sup>1)</sup></b>	<i>average in per cent</i>	<b>66.6</b>	<b>65.4</b>	<b>65.0</b>	<b>65.7</b>	<b>66.5</b>	<b>67.7</b>	<b>68.7</b>	<b>69.5</b>	<b>70.3</b>	<b>71.0</b>
<b>Labour force/Pop. 15–64</b>	<i>average in per cent</i>	<b>70.6</b>	<b>71.1</b>	<b>71.2</b>	<b>71.6</b>	<b>72.7</b>	<b>74.2</b>	<b>74.7</b>	<b>75.4</b>	<b>76.1</b>	<b>76.9</b>
<b>Participation rate 15–64<sup>2)</sup></b>	<i>average in per cent</i>	<b>69.7</b>	<b>70.1</b>	<b>70.2</b>	<b>70.5</b>	<b>71.6</b>	<b>72.9</b>	<b>73.4</b>	<b>74.1</b>	<b>74.7</b>	<b>75.4</b>
<b>SNA</b>											
<b>Employment (domestic concept)</b>	<i>av. in thous.persons</i>	<b>5 204</b>	<b>5 110</b>	<b>5 057</b>	<b>5 043</b>	<b>5 065</b>	<b>5 084</b>	<b>5 098</b>	<b>5 114</b>	<b>5 123</b>	<b>5 132</b>
	<i>growth in %</i>	2.2	-1.8	-1.0	-0.3	0.4	0.4	0.3	0.3	0.2	0.2
<b>Hours worked</b>	<i>bill. hours</i>	<b>9.31</b>	<b>9.09</b>	<b>9.10</b>	<b>9.11</b>	<b>8.99</b>	<b>8.96</b>	.	.	.	.
	<i>growth in %</i>	2.5	-2.4	0.1	0.1	-1.2	-0.4	.	.	.	.
<b>Hours worked / employment</b>	<i>hours</i>	<b>1 790</b>	<b>1 779</b>	<b>1 800</b>	<b>1 806</b>	<b>1 776</b>	<b>1 763</b>	.	.	.	.
	<i>growth in %</i>	0.3	-0.6	1.2	0.3	-1.6	-0.7	.	.	.	.
<b>Registered unemployment</b>											
<b>Unemployment</b>	<i>av. in thous.persons</i>	<b>324.6</b>	<b>465.6</b>	<b>528.7</b>	<b>507.8</b>	<b>504.7</b>	<b>564.4</b>	<b>565</b>	<b>527</b>	<b>497</b>	<b>476</b>
<b>Share of unemployed<sup>3)</sup></b>	<i>average in per cent</i>	<b>4.1</b>	<b>6.1</b>	<b>7.0</b>	<b>6.7</b>	<b>6.8</b>	<b>7.7</b>	<b>7.7</b>	<b>7.2</b>	<b>6.8</b>	<b>6.6</b>

Source: CZSO, Ministry of Labour and Social Affairs, own calculations

1) The indicator does not include employment over 64 years.

2) The indicator does not include labour force over 64 years.

3) Share of available job seekers aged 15 to 64 years in the population of the same age.

Table C.3.2: Labour Market – quarterly

		2013				2014			
		Q1	Q2	Q3	Q4	Q1	Q2	Q3	Q4
						Estimate		Forecast	
<b>Labour Force Survey</b>									
<b>Employment</b>	<i>av. in thous. persons</i>	<b>4 884</b>	<b>4 953</b>	<b>4 954</b>	<b>4 958</b>	<b>4 923</b>	<b>4 962</b>	<b>4 971</b>	<b>4 974</b>
	<i>YoY growth in %</i>	1.0	1.3	0.7	0.8	0.8	0.2	0.3	0.3
	<i>QoQ growth in %</i>	0.2	0.6	-0.1	0.2	0.1	0.0	0.1	0.2
<b>– employees</b>	<i>av. in thous. persons</i>	<b>4 015</b>	<b>4 074</b>	<b>4 064</b>	<b>4 067</b>	<b>4 030</b>	<b>4 064</b>	<b>4 064</b>	<b>4 069</b>
	<i>growth in %</i>	2.0	2.4	0.9	1.3	0.4	-0.2	0.0	0.0
<b>– entrepreneurs and self-employed</b>	<i>av. in thous. persons</i>	<b>869</b>	<b>879</b>	<b>889</b>	<b>890</b>	<b>893</b>	<b>898</b>	<b>907</b>	<b>906</b>
	<i>growth in %</i>	-3.2	-3.2	-0.5	-1.3	2.8	2.2	1.9	1.7
<b>Unemployment</b>	<i>av. in thous. persons</i>	<b>393</b>	<b>358</b>	<b>370</b>	<b>355</b>	<b>358</b>	<b>319</b>	<b>330</b>	<b>326</b>
<b>Unemployment rate</b>	<i>average in per cent</i>	<b>7.4</b>	<b>6.7</b>	<b>6.9</b>	<b>6.7</b>	<b>6.8</b>	<b>6.0</b>	<b>6.2</b>	<b>6.1</b>
<b>Labour force</b>	<i>av. in thous. persons</i>	<b>5 277</b>	<b>5 311</b>	<b>5 323</b>	<b>5 313</b>	<b>5 281</b>	<b>5 281</b>	<b>5 301</b>	<b>5 300</b>
	<i>growth in %</i>	1.4	1.4	0.7	0.3	0.1	-0.6	-0.4	-0.3
<b>Population aged 15–64</b>	<i>av. in thous. persons</i>	<b>7 184</b>	<b>7 166</b>	<b>7 145</b>	<b>7 121</b>	<b>7 103</b>	<b>7 089</b>	<b>7 073</b>	<b>7 058</b>
	<i>growth in %</i>	-1.0	-1.0	-1.1	-1.1	-1.1	-1.1	-1.0	-0.9
<b>Employment/Pop. 15–64</b>	<i>average in per cent</i>	<b>68.0</b>	<b>69.1</b>	<b>69.3</b>	<b>69.6</b>	<b>69.3</b>	<b>70.0</b>	<b>70.3</b>	<b>70.5</b>
	<i>increase over a year</i>	1.3	1.6	1.2	1.3	1.3	0.9	0.9	0.9
<b>Employment rate 15–64<sup>1)</sup></b>	<i>average in per cent</i>	<b>66.8</b>	<b>67.8</b>	<b>68.0</b>	<b>68.3</b>	<b>68.1</b>	<b>68.7</b>	<b>68.9</b>	<b>69.1</b>
	<i>increase over a year</i>	1.2	1.3	1.0	1.2	1.2	0.9	0.9	0.9
<b>Labour force/Pop. 15–64</b>	<i>average in per cent</i>	<b>73.5</b>	<b>74.1</b>	<b>74.5</b>	<b>74.6</b>	<b>74.4</b>	<b>74.5</b>	<b>74.9</b>	<b>75.1</b>
	<i>increase over a year</i>	1.7	1.7	1.3	1.0	0.9	0.4	0.4	0.5
<b>Participation rate 15–64<sup>2)</sup></b>	<i>average in per cent</i>	<b>72.3</b>	<b>72.8</b>	<b>73.2</b>	<b>73.3</b>	<b>73.1</b>	<b>73.2</b>	<b>73.6</b>	<b>73.7</b>
	<i>increase over a year</i>	1.6	1.5	1.1	1.0	0.8	0.4	0.4	0.5
<b>SNA</b>									
<b>Employment (domestic concept)</b>	<i>av. in thous. persons</i>	<b>5 023</b>	<b>5 093</b>	<b>5 112</b>	<b>5 107</b>	<b>5 047</b>	<b>5 087</b>	<b>5 132</b>	<b>5 125</b>
	<i>growth in %</i>	0.5	0.7	0.1	0.1	0.5	-0.1	0.4	0.4
<b>Hours worked</b>	<i>bill. hours</i>	<b>2.26</b>	<b>2.33</b>	<b>2.11</b>	<b>2.26</b>	<b>2.26</b>	<b>2.29</b>	.	.
	<i>growth in %</i>	-4.0	0.0	3.7	-0.5	0.0	-1.8	.	.
<b>Hours worked / employment</b>	<i>hours</i>	<b>450</b>	<b>457</b>	<b>413</b>	<b>443</b>	<b>448</b>	<b>450</b>	.	.
	<i>growth in %</i>	-4.5	-0.8	3.5	-0.6	-0.5	-1.7	.	.
<b>Registered unemployment</b>									
<b>Unemployment</b>	<i>av. in thous. persons</i>	<b>582</b>	<b>559</b>	<b>551</b>	<b>566</b>	<b>619</b>	<b>566</b>	<b>537</b>	<b>538</b>
<b>Share of unemployed<sup>3)</sup></b>	<i>average in per cent</i>	<b>7.9</b>	<b>7.6</b>	<b>7.5</b>	<b>7.7</b>	<b>8.5</b>	<b>7.8</b>	<b>7.4</b>	<b>7.3</b>

Source: CZSO, Ministry of Labour and Social Affairs, own calculations

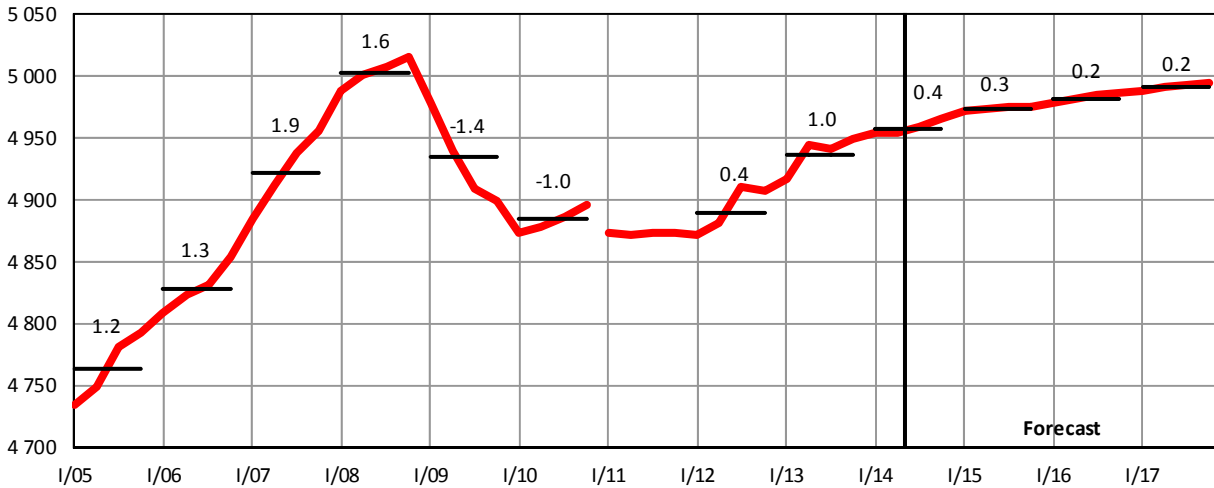
1) The indicator does not include employment over 64 years.

2) The indicator does not include labour force over 64 years.

3) Share of available job seekers aged 15 to 64 years in the population of the same age.

**Graph C.3.3: Employment (LFS)**

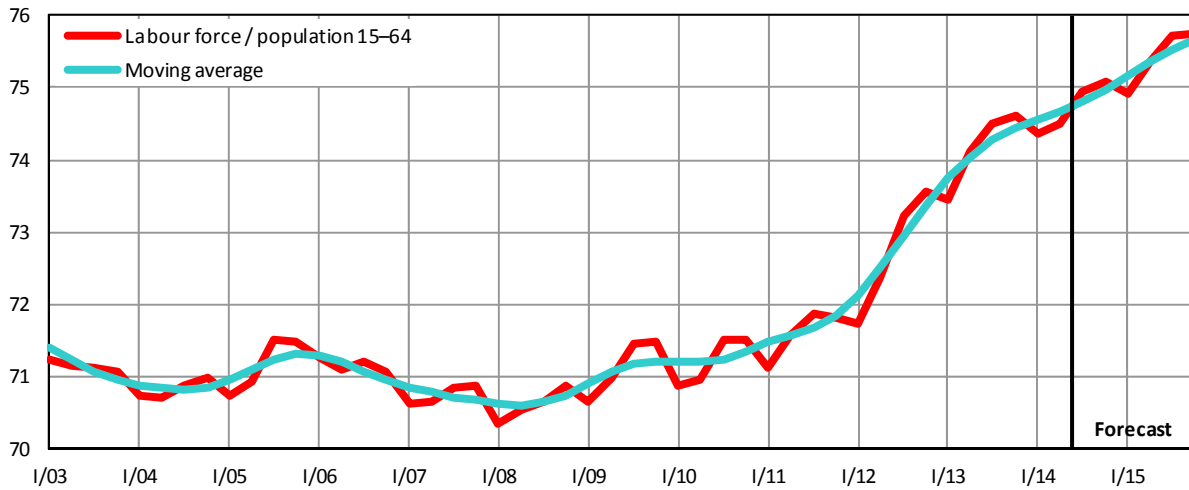
seasonally adjusted data, in thousands of persons, growth rates in %



Source: CZSO, own calculations

**Graph C.3.4: Ratio of Labour Force to Population Aged 15–64**

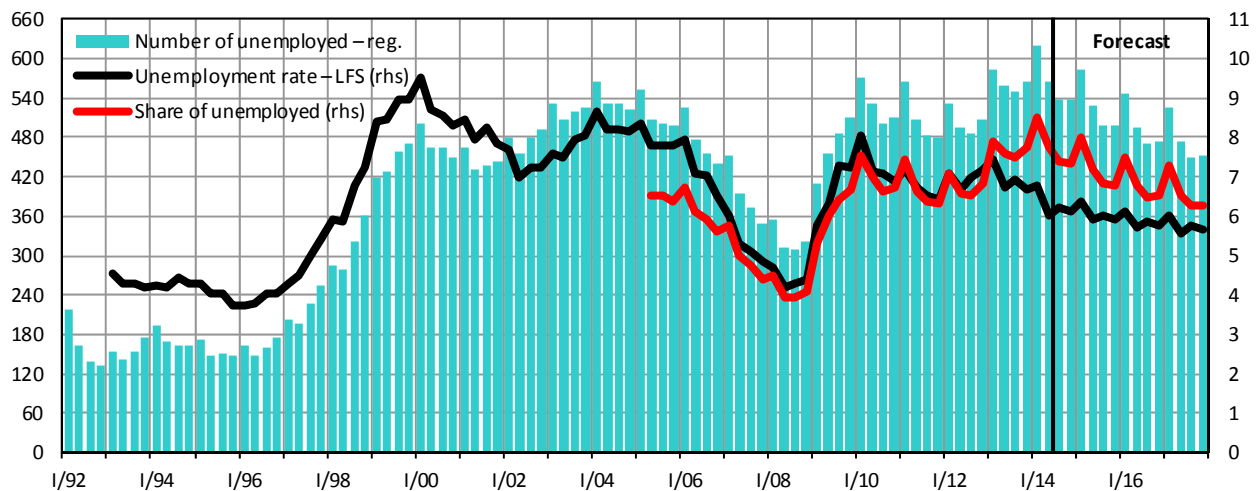
in %



Source: CZSO, own calculations

**Graph C.3.5: Unemployment**

quarterly average, in thousands of persons, in % (rhs)

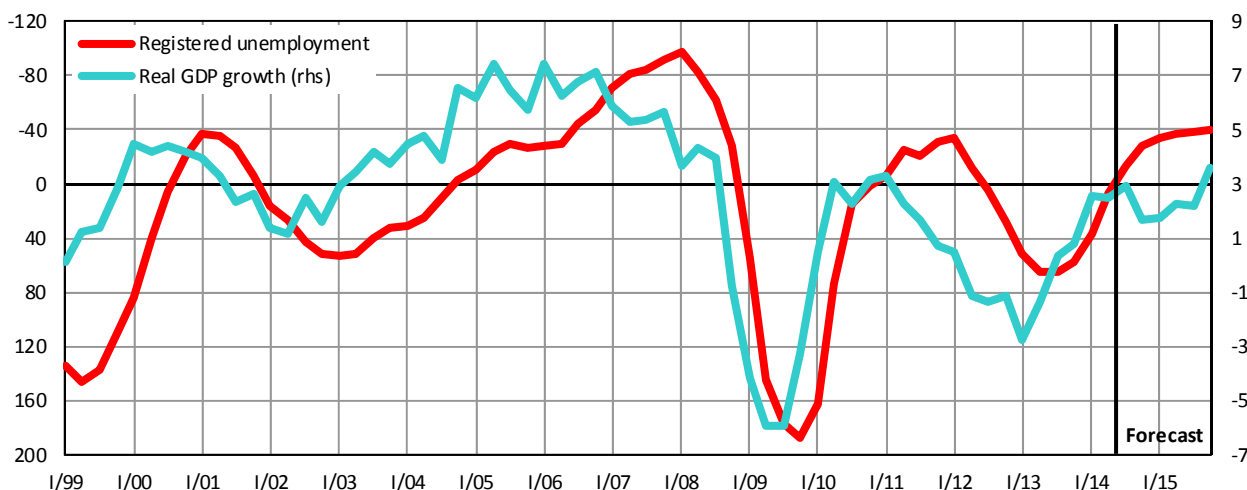


Source: CZSO, Ministry of Labour and Social Affairs, own calculations

Note: Share of unemployed (Ministry of Labour and Social Affairs) is defined as a share of available job seekers aged 15 to 64 years in the population of the same age.

### Graph C.3.6: Economic Output and Unemployment

YoY real GDP growth rate in %, change in unemployment in thousands of persons



Source: CZSO, Ministry of Labour and Social Affairs, own calculations

Table C.3.3: Labour Market – analytical indicators

		2006	2007	2008	2009	2010	2011	2012	2013	2014	2015	
											Forecast	Forecast
<b>Compensation per employee</b>												
– nominal	growth in %	5.9	6.2	4.1	-0.6	3.3	2.8	1.4	-0.6	3.1	3.6	
– real	growth in %	3.3	3.2	-2.1	-1.6	1.8	0.9	-1.9	-2.0	2.6	2.1	
<b>Wage bill</b>	growth in %	7.1	8.3	7.5	-2.0	0.6	2.2	2.1	-0.4	2.9	3.9	
<b>Average monthly wage <sup>1)</sup></b>												
– nominal	CZK	19 536	20 947	22 592	23 353	23 858	24 452	25 063	25 075	25 700	26 700	
	growth in %	6.5	7.2	7.9	3.4	2.2	2.5	2.5	0.0	2.6	3.8	
– real	CZK 2005	19 053	19 865	20 147	20 610	20 753	20 866	20 707	20 426	20 900	21 300	
	growth in %	3.9	4.3	1.4	2.3	0.7	0.5	-0.8	-1.4	2.1	2.2	
<b>Median monthly wage</b>												
	CZK	16 273	17 445	19 364	19 781	20 294	20 743	20 984	21 173	.	.	
	growth in %	.	7.2	11.0	2.2	2.6	2.2	1.2	0.9	.	.	
<b>Labour productivity</b>	growth in %	5.5	3.4	0.5	-3.1	3.4	2.2	-1.2	-1.1	2.1	2.1	
<b>Unit labour costs <sup>2)</sup></b>	growth in %	0.5	2.7	3.5	2.6	0.0	0.6	2.6	0.5	0.9	1.4	
<b>Compensations of employees / GDP</b>	%	39.7	39.5	40.3	40.0	40.2	40.4	40.9	40.6	39.8	39.7	

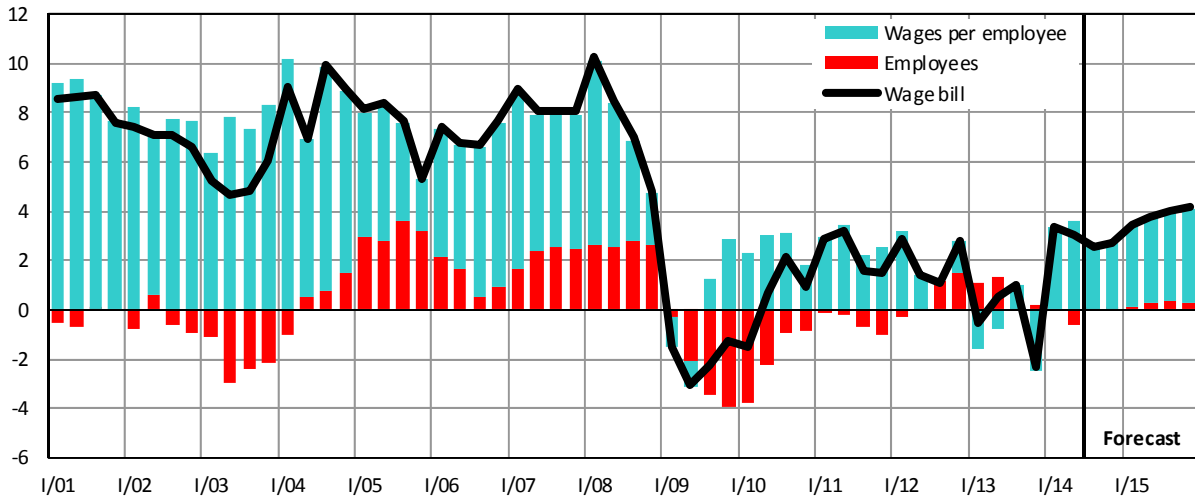
Source: CZSO, own calculations

1) New time series: average wage is derived from full-time-equivalent employers in the entire economy.

2) Ratio of nominal compensation per employee to real productivity of labour.

**Graph C.3.7: Wage Bill – nominal, domestic concept**

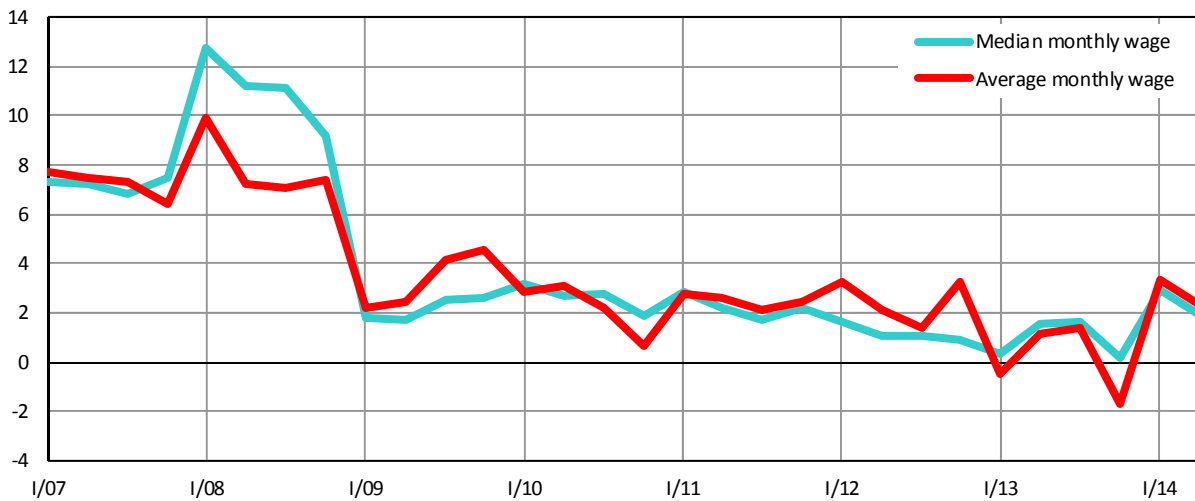
YoY growth rate, in %



Source: CZSO, own calculations

**Graph C.3.8: Nominal Monthly Wage**

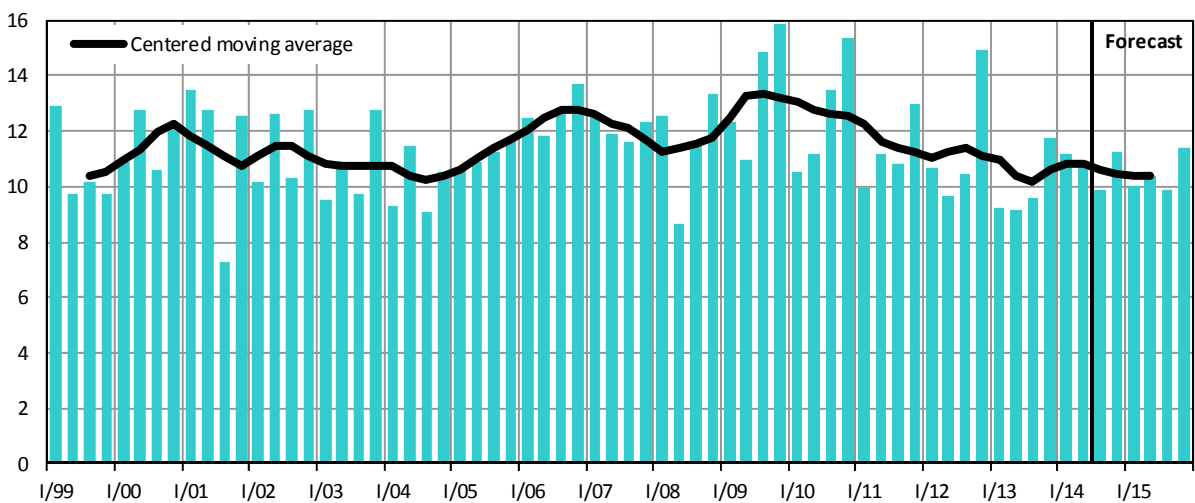
YoY growth rate, in %



Source: CZSO, own calculations

**Graph C.3.9: Gross Savings Rate of Households**

in % of disposable income



Source: CZSO, own calculations

Table C.3.4: **Income and Expenditures of Households – yearly**

SNA methodology – national concept

		2006	2007	2008	2009	2010	2011	2012	2013	2014	2015
									<i>Prelim.</i>	<i>Forecast</i>	<i>Forecast</i>
<b>Current income</b>											
Compensation of employees	<i>bill.CZK</i>	<b>1 392</b>	<b>1 505</b>	<b>1 593</b>	<b>1 553</b>	<b>1 585</b>	<b>1 626</b>	<b>1 662</b>	<b>1 674</b>	<b>1 721</b>	<b>1 787</b>
	<i>growth in %</i>	7.3	8.1	5.8	-2.5	2.0	2.6	2.2	0.7	2.9	3.8
Gross operating surplus and mixed income	<i>bill.CZK</i>	<b>601</b>	<b>632</b>	<b>657</b>	<b>686</b>	<b>685</b>	<b>674</b>	<b>660</b>	<b>656</b>	<b>666</b>	<b>681</b>
	<i>growth in %</i>	5.6	5.0	4.0	4.5	-0.2	-1.7	-2.0	-0.6	1.5	2.4
Property income received	<i>bill.CZK</i>	<b>155</b>	<b>162</b>	<b>177</b>	<b>158</b>	<b>152</b>	<b>151</b>	<b>146</b>	<b>138</b>	<b>135</b>	<b>137</b>
	<i>growth in %</i>	10.5	4.1	9.8	-11.0	-3.5	-0.8	-3.7	-5.0	-2.1	0.8
Social benefits not-in-kind	<i>bill.CZK</i>	<b>421</b>	<b>471</b>	<b>493</b>	<b>535</b>	<b>542</b>	<b>553</b>	<b>566</b>	<b>563</b>	<b>581</b>	<b>596</b>
	<i>growth in %</i>	9.1	11.9	4.7	8.6	1.2	2.1	2.3	-0.5	3.2	2.5
Other current transfers received	<i>bill.CZK</i>	<b>117</b>	<b>126</b>	<b>143</b>	<b>141</b>	<b>140</b>	<b>140</b>	<b>152</b>	<b>146</b>	<b>154</b>	<b>159</b>
	<i>growth in %</i>	6.6	8.3	13.2	-1.4	-1.0	-0.2	8.8	-4.1	5.8	3.0
<b>Current expenditure</b>											
Property income paid	<i>bill.CZK</i>	<b>22</b>	<b>27</b>	<b>31</b>	<b>19</b>	<b>23</b>	<b>21</b>	<b>15</b>	<b>19</b>	<b>16</b>	<b>16</b>
	<i>growth in %</i>	9.8	25.2	11.2	-36.7	17.7	-8.5	-27.3	24.4	-12.7	0.0
Curr. taxes on income and property	<i>bill.CZK</i>	<b>144</b>	<b>161</b>	<b>145</b>	<b>140</b>	<b>137</b>	<b>149</b>	<b>151</b>	<b>159</b>	<b>157</b>	<b>163</b>
	<i>growth in %</i>	0.6	11.9	-9.9	-3.0	-2.6	8.6	1.6	5.1	-0.8	3.8
Social contributions	<i>bill.CZK</i>	<b>563</b>	<b>616</b>	<b>637</b>	<b>603</b>	<b>621</b>	<b>640</b>	<b>653</b>	<b>670</b>	<b>695</b>	<b>725</b>
	<i>growth in %</i>	9.6	9.5	3.3	-5.3	2.9	3.0	2.2	2.5	3.8	4.2
Other current transfers paid	<i>bill.CZK</i>	<b>116</b>	<b>130</b>	<b>146</b>	<b>143</b>	<b>141</b>	<b>147</b>	<b>155</b>	<b>147</b>	<b>148</b>	<b>151</b>
	<i>growth in %</i>	5.7	12.4	12.1	-1.6	-1.6	4.3	5.6	-5.0	0.2	2.1
Gross disposable income	<i>bill.CZK</i>	<b>1 842</b>	<b>1 961</b>	<b>2 106</b>	<b>2 168</b>	<b>2 182</b>	<b>2 188</b>	<b>2 211</b>	<b>2 181</b>	<b>2 241</b>	<b>2 304</b>
	<i>growth in %</i>	7.3	6.4	7.4	3.0	0.7	0.2	1.0	-1.3	2.7	2.8
Final consumption	<i>bill.CZK</i>	<b>1 631</b>	<b>1 749</b>	<b>1 887</b>	<b>1 891</b>	<b>1 920</b>	<b>1 957</b>	<b>1 970</b>	<b>1 999</b>	<b>2 037</b>	<b>2 104</b>
	<i>growth in %</i>	5.6	7.3	7.9	0.2	1.5	1.9	0.7	1.4	1.9	3.3
Change in share in pension funds	<i>bill.CZK</i>	<b>23</b>	<b>26</b>	<b>24</b>	<b>17</b>	<b>15</b>	<b>16</b>	<b>15</b>	<b>35</b>	<b>37</b>	<b>40</b>
Gross savings	<i>bill.CZK</i>	<b>234</b>	<b>238</b>	<b>243</b>	<b>295</b>	<b>278</b>	<b>247</b>	<b>255</b>	<b>218</b>	<b>241</b>	<b>240</b>
Capital transfers (income (-) / expenditure (+))	<i>bill.CZK</i>	<b>-29</b>	<b>-34</b>	<b>-25</b>	<b>-25</b>	<b>-29</b>	<b>-25</b>	<b>-21</b>	<b>-13</b>	<b>-11</b>	<b>-12</b>
Gross capital formation	<i>bill.CZK</i>	<b>188</b>	<b>213</b>	<b>219</b>	<b>212</b>	<b>230</b>	<b>198</b>	<b>178</b>	<b>178</b>	<b>177</b>	<b>182</b>
	<i>growth in %</i>	12.2	12.8	2.8	-3.1	8.8	-14.0	-10.0	-0.4	-0.4	2.8
Change in financial assets and liab.	<i>bill.CZK</i>	<b>74</b>	<b>58</b>	<b>47</b>	<b>106</b>	<b>75</b>	<b>72</b>	<b>96</b>	<b>50</b>	<b>72</b>	<b>67</b>
Real disposable income	<i>growth in %</i>	<b>5.3</b>	<b>3.4</b>	<b>2.5</b>	<b>2.1</b>	<b>0.1</b>	<b>-1.4</b>	<b>-1.4</b>	<b>-2.3</b>	<b>2.1</b>	<b>1.3</b>
Gross savings rate	<i>%</i>	<b>12.7</b>	<b>12.1</b>	<b>11.5</b>	<b>13.6</b>	<b>12.7</b>	<b>11.3</b>	<b>11.5</b>	<b>10.0</b>	<b>10.8</b>	<b>10.4</b>

Source: CZSO, own calculations