

Tables and Graphs:

C.1 Economic Output

Sources: CZSO, MoF estimates

Table C.1.1: Real GDP by Type of Expenditure – yearly
chained volumes, reference year 2005

		2006	2007	2008	2009	2010	2011	2012	2013	2014	2015
							Prelim.	Forecast	Forecast	Outlook	Outlook
Gross domestic product	<i>bill. CZK 2005</i>	3335	3526	3635	3465	3560	3619	3582	3607	3677	3774
	<i>growth in %</i>	7.0	5.7	3.1	-4.7	2.7	1.7	-1.0	0.7	1.9	2.6
Private consumption exp.¹⁾	<i>bill. CZK 2005</i>	1605	1673	1720	1714	1724	1713	1662	1654	1674	1712
	<i>growth in %</i>	4.4	4.2	2.8	-0.4	0.6	-0.6	-3.0	-0.5	1.2	2.3
Government consumption exp.	<i>bill. CZK 2005</i>	664	666	674	700	704	692	684	675	667	663
	<i>growth in %</i>	-0.6	0.4	1.2	3.8	0.6	-1.7	-1.1	-1.3	-1.2	-0.7
Gross capital formation	<i>bill. CZK 2005</i>	910	1051	1071	848	898.43	887	851	858	892	930
	<i>growth in %</i>	10.2	15.5	1.9	-20.8	5.9	-1.3	-4.1	0.9	3.9	4.3
– Gross fixed capital formation	<i>bill. CZK 2005</i>	851	964	1004	888	889	881	876	879	895	920
	<i>growth in %</i>	5.8	13.2	4.1	-11.5	0.1	-0.9	-0.6	0.3	1.8	2.8
– Change in stocks and valuables	<i>bill. CZK 2005</i>	59	87	68	-40	9	6	-26	-21	-3	11
Exports of goods and services	<i>bill. CZK 2005</i>	2286	2541	2642	2377	2768	3074	3206	3319	3469	3646
	<i>growth in %</i>	13.8	11.2	4.0	-10.0	16.4	11.0	4.3	3.5	4.5	5.1
Imports of goods and services	<i>bill. CZK 2005</i>	2129	2402	2467	2180	2529	2718	2774	2843	2956	3097
	<i>growth in %</i>	10.8	12.8	2.7	-11.6	16.0	7.5	2.1	2.5	4.0	4.8
Gross domestic exp.	<i>bill. CZK 2005</i>	3179	3390	3465	3271	3334	3299	3204	3195	3238	3310
	<i>growth in %</i>	4.9	6.6	2.2	-5.6	1.9	-1.0	-2.9	-0.3	1.4	2.2
Methodological discrepancy²⁾	<i>bill. CZK 2005</i>	0	-3	-6	5	-6	-29	-46	-57	-69	-81
Real gross domestic income	<i>bill. CZK 2005</i>	3280	3488	3562	3423	3458	3457	3391	3388	3448	3534
	<i>growth in %</i>	5.3	6.3	2.1	-3.9	1.0	0.0	-1.9	-0.1	1.8	2.5
Contribution to GDP growth³⁾											
– Gross domestic expenditure	<i>percent. points</i>	4.7	6.4	2.2	-5.5	1.8	-1.0	-2.8	-0.3	1.3	2.1
– consumption	<i>percent. points</i>	2.0	2.1	1.6	0.6	0.4	-0.7	-1.8	-0.5	0.4	1.0
– household expenditure	<i>percent. points</i>	2.2	2.1	1.4	-0.2	0.3	-0.3	-1.5	-0.2	0.6	1.2
– government expenditure	<i>percent. points</i>	-0.1	0.1	0.2	0.7	0.1	-0.4	-0.2	-0.3	-0.2	-0.1
– gross capital formation	<i>percent. points</i>	2.7	4.3	0.6	-6.0	1.4	-0.3	-1.0	0.2	0.9	1.1
– gross fixed capital formation	<i>percent. points</i>	1.5	3.4	1.1	-3.1	0.0	-0.2	-0.1	0.1	0.4	0.7
– change in stocks	<i>percent. points</i>	1.2	0.9	-0.5	-3.0	1.4	-0.1	-0.9	0.1	0.5	0.4
– Foreign balance	<i>percent. points</i>	2.3	-0.7	0.9	0.8	0.9	2.7	1.8	1.0	0.6	0.6

¹⁾ The consumption of non-profit institutions serving households (NPISH) is included in the private consumption.

²⁾ Deterministic impact of using prices and structure of the previous year for calculation of y-o-y growth.

³⁾ Calculated on the basis of prices and structure of the previous year with perfectly additive contributions.

Table C.1.2: Real GDP by Type of Expenditure – quarterly
 chained volumes, reference year 2005

		2011				2012			
		Q1	Q2	Q3	Q4	Q1	Q2	Q3	Q4
		<i>Prelim.</i>	<i>Prelim.</i>	<i>Prelim.</i>	<i>Prelim.</i>	<i>Prelim.</i>	<i>Prelim.</i>	<i>Estim.</i>	<i>Forecast</i>
Gross domestic product	<i>bill. CZK 2005</i>	851	917	916	935	850	902	903	928
	<i>growth in %</i>	3.1	2.1	1.4	0.3	-0.2	-1.7	-1.4	-0.7
	<i>growth in % ¹⁾</i>	2.8	2.1	1.3	0.6	-0.5	-1.0	-1.1	-1.0
	<i>quart.growth in % ¹⁾</i>	0.5	0.3	0.0	-0.2	-0.6	-0.2	-0.2	-0.1
Private consumption exp.	<i>bill. CZK 2005</i>	409	428	433	444	399	413	420	430
	<i>growth in %</i>	-0.5	-0.5	-0.7	-0.8	-2.4	-3.5	-2.9	-3.2
Government consumption exp.	<i>bill. CZK 2005</i>	163	171	168	191	162	169	165	188
	<i>growth in %</i>	-0.3	-1.3	-3.0	-2.1	-0.5	-0.9	-1.8	-1.2
Gross capital formation	<i>bill. CZK 2005</i>	190	226	249	221	174	212	243	222
	<i>growth in %</i>	4.2	0.6	-3.4	-5.1	-8.7	-6.5	-2.6	0.7
– Gross fixed capital formation	<i>bill. CZK 2005</i>	187	217	226	252	190	216	224	247
	<i>growth in %</i>	-1.7	1.4	-2.6	-0.7	1.7	-0.5	-1.1	-1.8
– Change in stocks and valuables	<i>bill. CZK 2005</i>	3	10	23	-31	-16	-4	19	-25
Exports of goods and services	<i>bill. CZK 2005</i>	756	783	751	785	813	802	777	813
	<i>growth in %</i>	19.2	13.0	8.6	4.6	7.7	2.4	3.6	3.6
Imports of goods and services	<i>bill. CZK 2005</i>	656	683	679	700	682	682	693	716
	<i>growth in %</i>	16.9	10.0	3.7	1.1	4.0	0.0	2.1	2.4
Methodological discrepancy	<i>bill. CZK 2005</i>	-9	-9	-5	-5	-15	-12	-9	-9
Real gross domestic income	<i>bill. CZK 2005</i>	810	875	876	896	801	852	857	881
	<i>growth in %</i>	0.6	-0.1	-0.2	-0.3	-1.0	-2.6	-2.3	-1.6

¹⁾ From seasonally and working day adjusted data

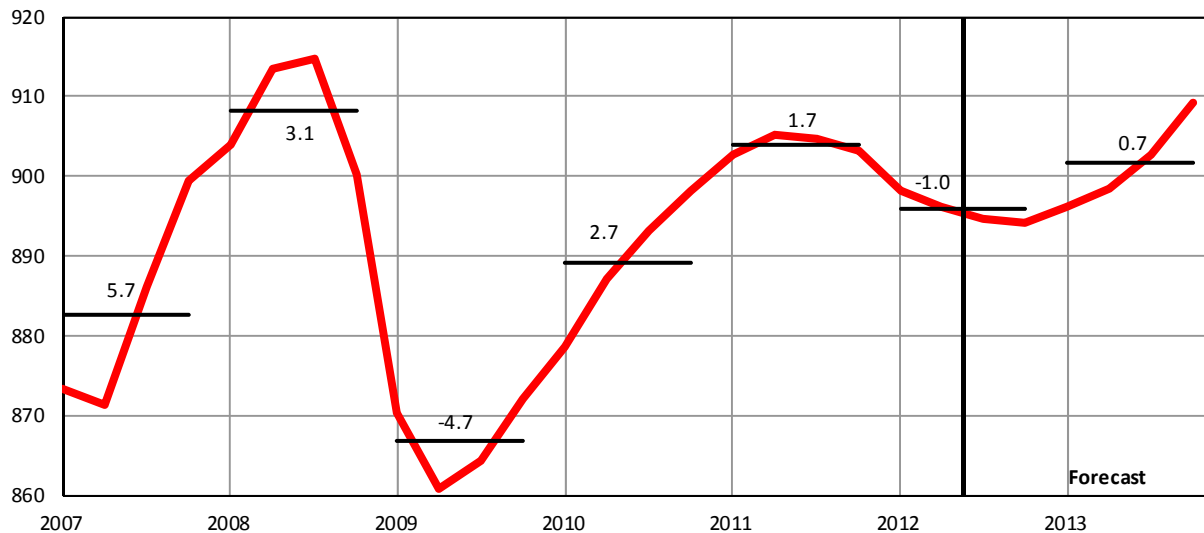
Table C.1.3: Nominal GDP by Type of Expenditure – yearly

		2006	2007	2008	2009	2010	2011	2012	2013	2014	2015
							<i>Prelim.</i>	<i>Forecast</i>	<i>Forecast</i>	<i>Outlook</i>	<i>Outlook</i>
Gross domestic product	<i>bill. CZK</i>	3353	3663	3848	3739	3775	3808	3820	3882	4015	4179
	<i>growth in %</i>	7.6	9.2	5.1	-2.8	1.0	0.9	0.3	1.6	3.4	4.1
Private consumption	<i>bill. CZK</i>	1629	1748	1883	1880	1900	1921	1924	1956	2025	2112
	<i>growth in %</i>	6.0	7.3	7.8	-0.2	1.1	1.1	0.2	1.6	3.5	4.3
Government consumption	<i>bill. CZK</i>	694	726	759	810	808	793	792	794	789	794
	<i>growth in %</i>	4.0	4.6	4.6	6.6	-0.2	-1.9	-0.1	0.3	-0.7	0.7
Gross capital formation	<i>bill. CZK</i>	928	1092	1114	898	947	934	906	926	975	1027
	<i>growth in %</i>	12.4	17.6	2.0	-19.3	5.4	-1.4	-3.1	2.2	5.3	5.4
– Gross fixed capital formation	<i>bill. CZK</i>	860	990	1031	927	923	913	919	934	964	1003
	<i>growth in %</i>	6.9	15.0	4.2	-10.1	-0.5	-1.1	0.6	1.6	3.2	4.1
– Change in stocks and valuables	<i>bill. CZK</i>	68	102	83	-29	24	21	-13	-8	11	24
External balance	<i>bill. CZK</i>	101	97	92	151	121	160	198	207	227	245
– Exports of goods and services	<i>bill. CZK</i>	2245	2498	2480	2233	2562	2854	3062	3175	3338	3516
	<i>growth in %</i>	11.8	11.3	-0.7	-10.0	14.7	11.4	7.3	3.7	5.1	5.3
– Imports of goods and services	<i>bill. CZK</i>	2144	2401	2388	2082	2441	2694	2864	2969	3111	3271
	<i>growth in %</i>	11.5	12.0	-0.5	-12.8	17.3	10.4	6.3	3.7	4.8	5.1
Gross national income	<i>bill. CZK</i>	3180	3401	3668	3489	3521	3549	3590	3641	3753	3887
	<i>growth in %</i>	6.6	6.9	7.8	-4.9	0.9	0.8	1.1	1.4	3.1	3.6
Primary income balance	<i>bill. CZK</i>	-172	-261	-180	-250	-254	-258	-230	-240	-262	-292

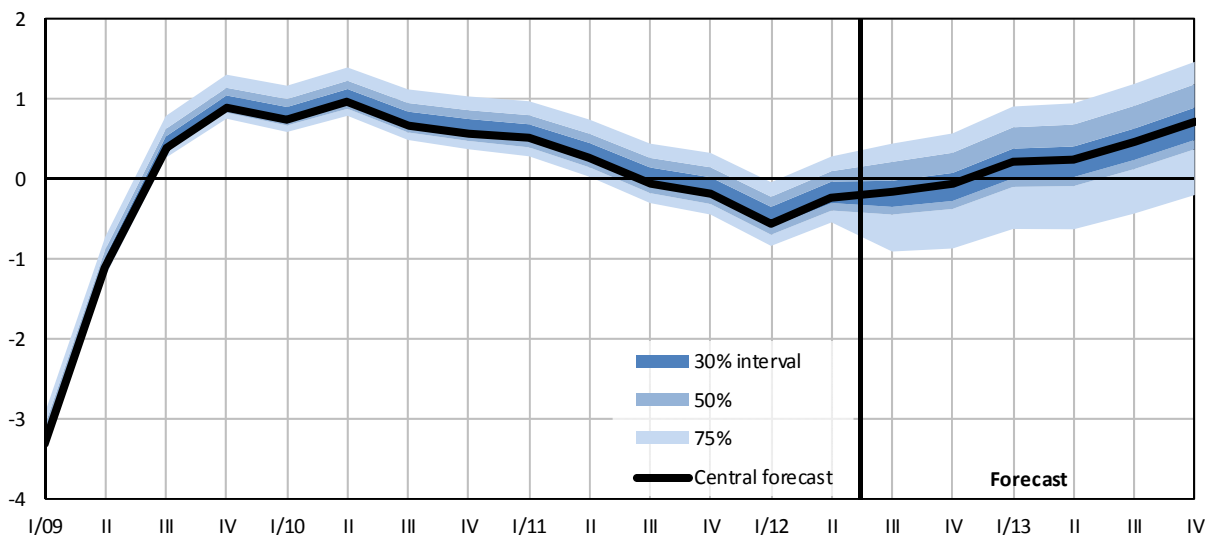
Table C.1.4: Nominal GDP by Type of Expenditure – quarterly

		2011				2012			
		Q1	Q2	Q3	Q4	Q1	Q2	Q3	Q4
		<i>Prelim.</i>	<i>Prelim.</i>	<i>Prelim.</i>	<i>Prelim.</i>	<i>Prelim.</i>	<i>Prelim.</i>	<i>Estim.</i>	<i>Forecast</i>
Gross domestic product	<i>bill. CZK</i>	884	961	966	997	896	958	964	1001
	<i>growth in %</i>	1.3	0.5	0.7	1.0	1.4	-0.3	-0.2	0.5
Private consumption	<i>bill. CZK</i>	455	480	486	500	460	479	488	498
	<i>growth in %</i>	1.2	1.2	0.9	1.2	1.0	-0.3	0.3	-0.4
Government consumption	<i>bill. CZK</i>	181	194	191	227	183	194	190	226
	<i>growth in %</i>	-1.1	-1.8	-2.9	-1.8	0.8	0.1	-0.8	-0.4
Gross capital formation	<i>bill. CZK</i>	200	238	263	232	185	226	258	238
	<i>growth in %</i>	3.7	0.1	-3.3	-4.7	-7.9	-5.3	-2.2	2.4
– Gross fixed capital formation	<i>bill. CZK</i>	194	224	234	262	199	226	234	260
	<i>growth in %</i>	-2.2	0.6	-3.0	0.1	2.7	1.1	0.1	-0.8
– Change in stocks and valuables	<i>bill. CZK</i>	7	15	30	-30	-14	0	24	-22
External balance	<i>bill. CZK</i>	47	49	25	39	69	60	29	40
– Exports of goods and services	<i>bill. CZK</i>	693	721	694	746	768	764	748	781
	<i>growth in %</i>	18.5	10.7	8.7	8.5	10.8	5.9	7.8	4.8
– Imports of goods and services	<i>bill. CZK</i>	646	672	669	707	699	704	719	741
	<i>growth in %</i>	20.1	11.2	6.2	5.8	8.3	4.8	7.5	4.8

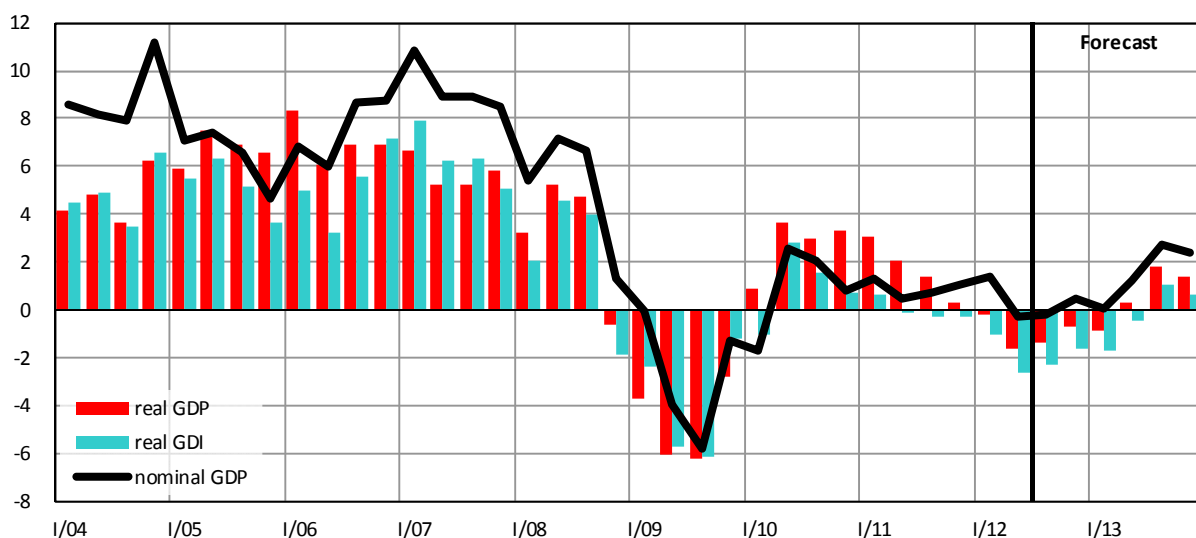
Graph C.1.1: Gross Domestic Product (real)
 chained volumes, bill. CZK in const. prices of 2005, seasonally adjusted



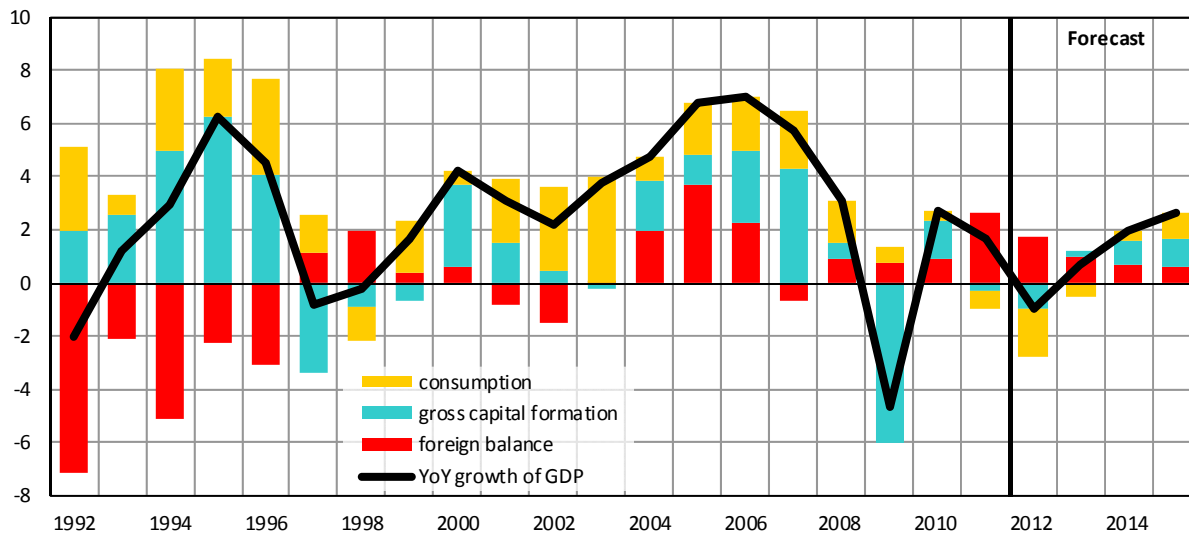
Graph C.1.2: Gross Domestic Product (real)
 QoQ growth rate, in %, seasonally adjusted



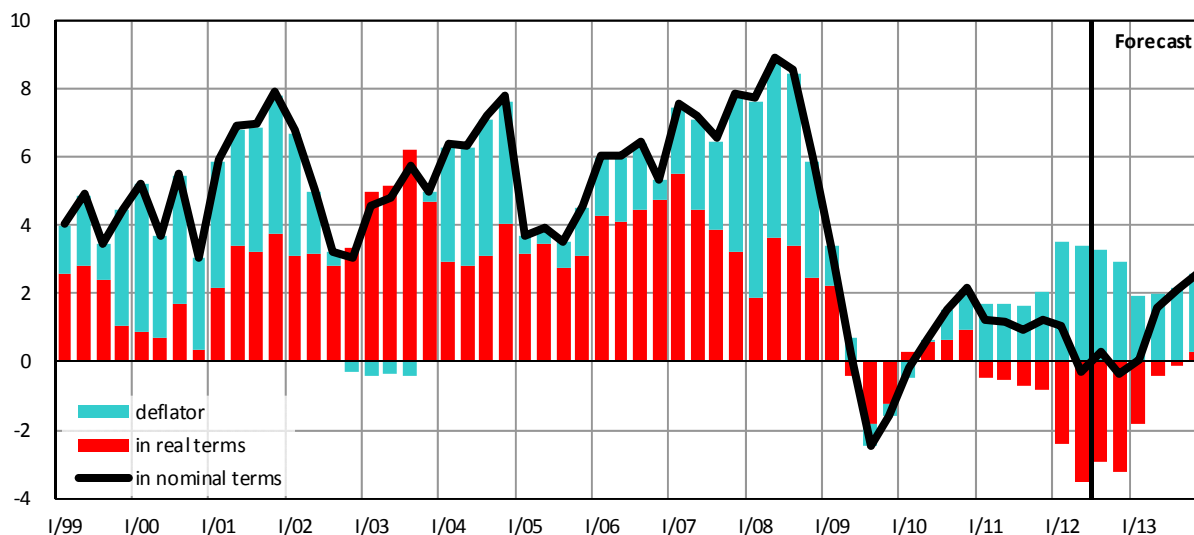
Graph C.1.3: Gross Domestic Product and Real Gross Domestic Income
 YoY growth rate, in %



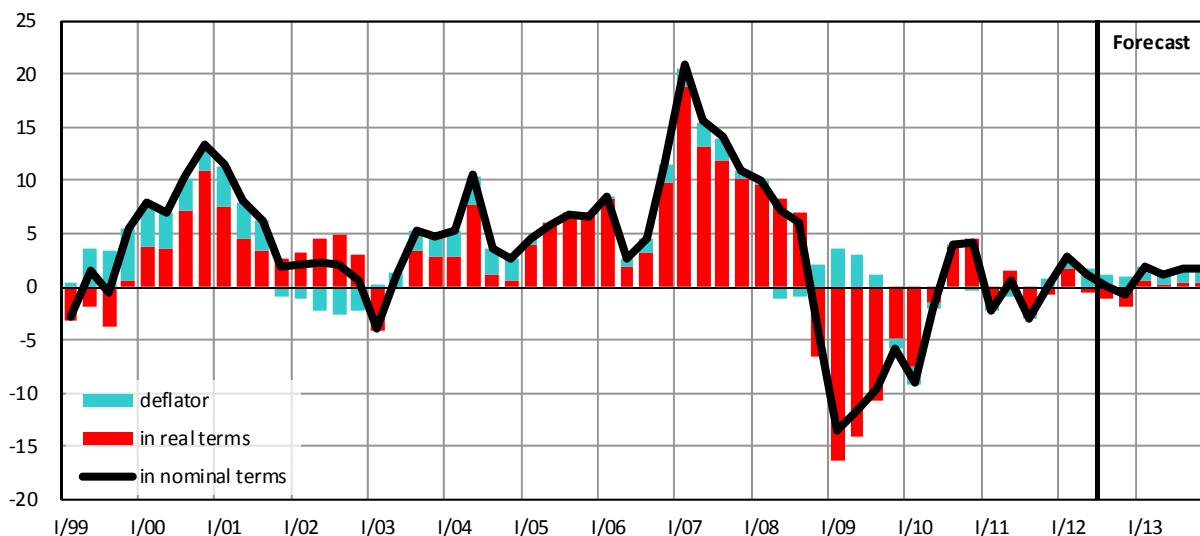
Graph C.1.4: Gross Domestic Product – contributions to YoY growth
in constant prices, decomposition of the YoY growth, in percentage points



Graph C.1.5: Private Consumption (incl. NPISH)
YoY growth rate, in %

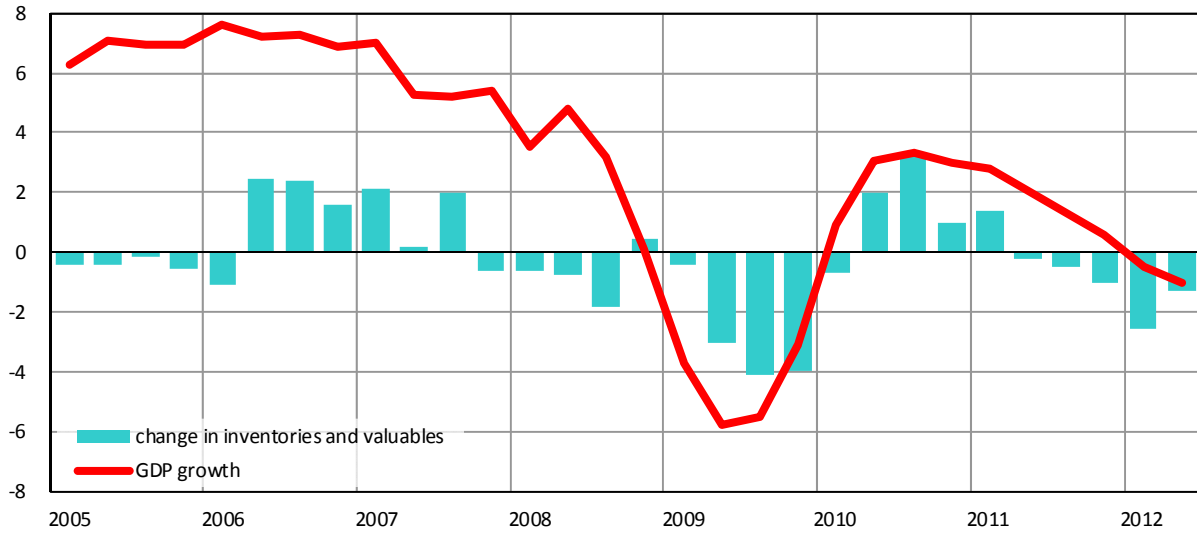


Graph C.1.6: Gross Fixed Capital Formation
YoY growth rate, in %



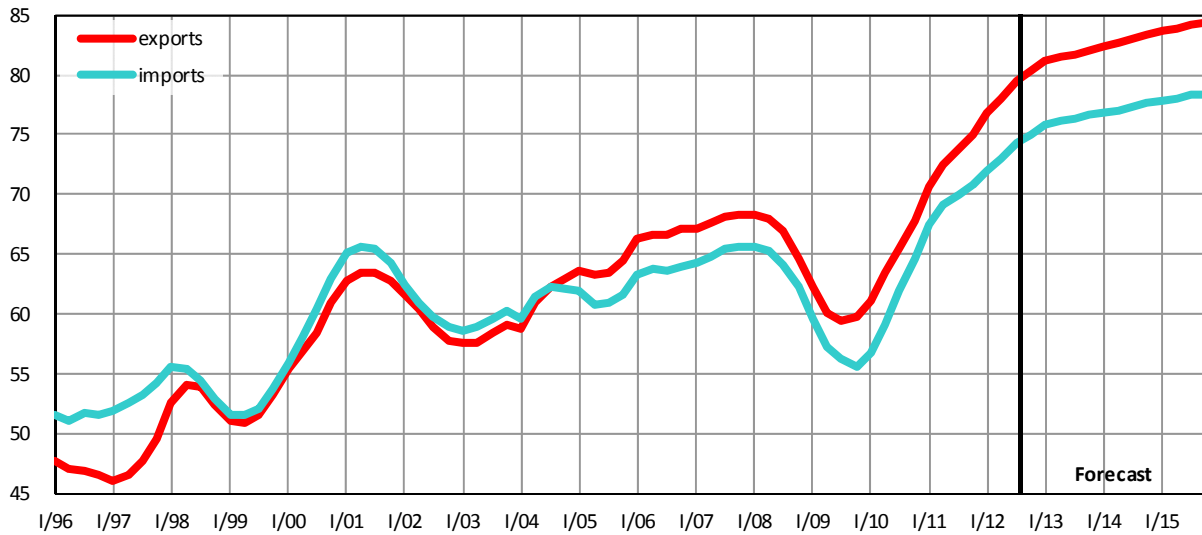
Graph C.1.7: Change in Inventories and Valuables (real)

seasonally adjusted, contributions to YoY growth of GDP in p.p.



Graph C.1.8: Ratio of Exports and Imports of Goods and Services to GDP (nominal)

yearly moving sums, in %



Graph C.1.9: GDP – Income Structure

yearly moving sums, in %

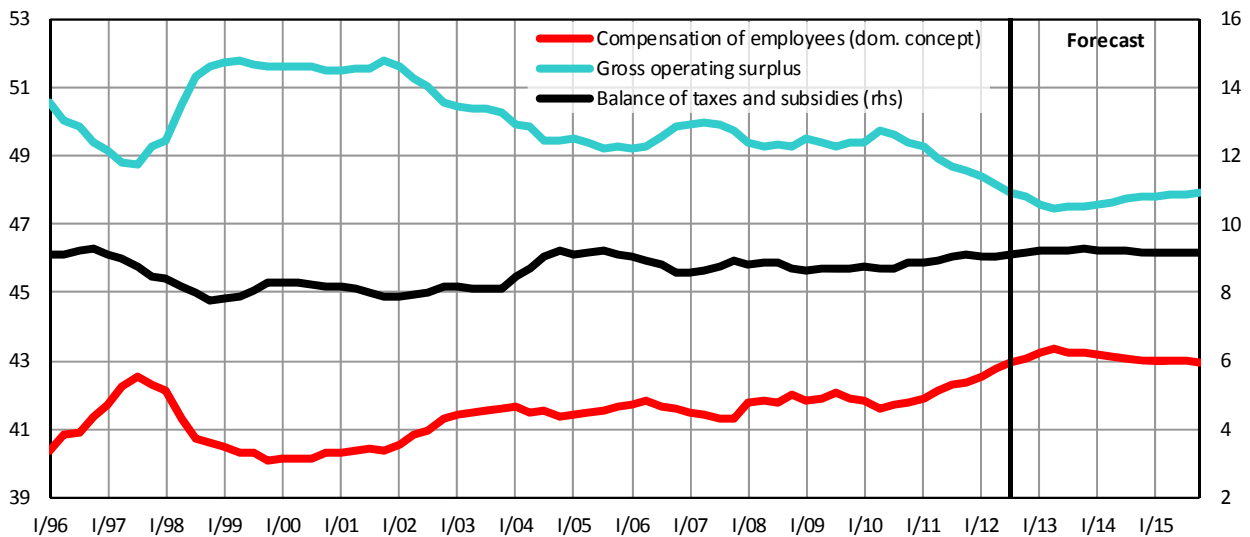


Table C.1.5: GDP by Type of Income – yearly

		2006	2007	2008	2009	2010	2011	2012	2013	2014	2015
							<i>Prelim.</i>	<i>Forecast</i>	<i>Forecast</i>	<i>Outlook</i>	<i>Outlook</i>
GDP	<i>bill. CZK</i>	3353	3663	3848	3739	3775	3808	3820	3882	4015	4179
	<i>growth in %</i>	7.6	9.2	5.1	-2.8	1.0	0.9	0.3	1.6	3.4	4.1
Balance of taxes and subsidies	<i>bill. CZK</i>	287	327	335	325	334	346	349	359	368	382
	<i>growth in %</i>	1.5	13.9	2.5	-3.1	2.8	3.5	0.9	2.9	2.5	3.8
– Taxes on production and imports	<i>bill. CZK</i>	364	407	419	425	434	452	457	470	481	498
	<i>growth in %</i>	2.9	12.0	2.9	1.4	2.1	4.3	1.0	2.8	2.4	3.4
– Subsidies on production	<i>bill. CZK</i>	76	80	84	100	100	107	108	111	113	115
	<i>growth in %</i>	8.6	4.8	4.4	19.5	-0.4	7.0	1.6	2.5	2.0	2.0
Compensation of employees	<i>bill. CZK</i>	1394	1513	1617	1567	1577	1613	1646	1679	1727	1794
	<i>growth in %</i>	7.3	8.6	6.8	-3.1	0.6	2.3	2.0	2.0	2.8	3.9
– Wages and salaries	<i>bill. CZK</i>	1053	1140	1226	1200	1195	1223	1247	1272	1327	1379
	<i>growth in %</i>	7.2	8.3	7.5	-2.1	-0.4	2.3	2.0	2.1	4.3	3.9
– Social security contributions	<i>bill. CZK</i>	341	373	390	367	382	391	399	407	400	415
	<i>growth in %</i>	7.8	9.4	4.7	-6.1	4.1	2.4	2.1	2.0	-1.8	3.9
Gross operating surplus	<i>bill. CZK</i>	1672	1822	1896	1847	1864	1848	1825	1843	1920	2002
	<i>growth in %</i>	8.9	9.0	4.1	-2.6	0.9	-0.8	-1.3	1.0	4.2	4.3
– Consumption of capital	<i>bill. CZK</i>	603	644	680	711	720	733	749	764	783	807
	<i>growth in %</i>	4.6	6.8	5.6	4.5	1.4	1.7	2.3	2.0	2.5	3.0
– Net operating surplus	<i>bill. CZK</i>	1069	1178	1216	1137	1144	1116	1076	1079	1137	1196
	<i>growth in %</i>	11.6	10.3	3.2	-6.5	0.6	-2.4	-3.6	0.3	5.3	5.2

Table C.1.6: GDP by Type of Income – quarterly

		2011				2012			
		Q1	Q2	Q3	Q4	Q1	Q2	Q3	Q4
		<i>Prelim.</i>	<i>Prelim.</i>	<i>Prelim.</i>	<i>Prelim.</i>	<i>Prelim.</i>	<i>Prelim.</i>	<i>Estimate</i>	<i>Forecast</i>
GDP	<i>bill. CZK</i>	884	961	966	997	896	958	964	1001
	<i>growth in %</i>	1.3	0.5	0.7	1.0	1.4	-0.3	-0.2	0.5
Balance of taxes and subsidies	<i>bill. CZK</i>	76	92	97	81	76	92	99	82
	<i>growth in %</i>	1.4	4.5	4.1	3.7	0.2	0.2	1.3	1.7
Compensation of employees	<i>bill. CZK</i>	384	400	400	430	395	406	407	437
	<i>growth in %</i>	2.3	3.2	2.1	1.7	3.1	1.7	1.6	1.6
– Wages and salaries	<i>bill. CZK</i>	289	302	304	327	298	307	309	333
	<i>growth in %</i>	2.4	3.4	1.8	1.7	3.0	1.6	1.6	1.6
– Social security contributions	<i>bill. CZK</i>	94	97	96	102	98	99	98	104
	<i>growth in %</i>	2.1	2.9	3.2	1.5	3.4	1.8	1.6	1.6
Gross operating surplus	<i>bill. CZK</i>	424	470	468	487	424	460	458	483
	<i>growth in %</i>	0.4	-2.5	-1.2	0.1	0.0	-2.1	-2.1	-0.8