

Tables and Graphs:

C.1 Economic Output

Sources: CZSO, MoF estimates

Table C.1.1: Real GDP by Type of Expenditure – yearly
chained volumes, reference year 2000

		2005	2006	2007	2008	2009	2010	2011	2012	2013	2014
							<i>Prelim.</i>	<i>Forecast</i>	<i>Forecast</i>	<i>Outlook</i>	<i>Outlook</i>
Gross domestic product	<i>bill. CZK 2000</i>	2630	2809	2982	3055	2928	2996	3052	3121	3224	3352
	<i>growth in %</i>	6.3	6.8	6.1	2.5	-4.1	2.3	1.9	2.3	3.3	4.0
Private consumption exp.¹⁾	<i>bill. CZK 2000</i>	1342	1411	1482	1535	1532	1539	1549	1578	1630	1698
	<i>growth in %</i>	2.5	5.1	5.0	3.6	-0.2	0.5	0.7	1.9	3.3	4.2
Government consumption exp.	<i>bill. CZK 2000</i>	542	548	551	557	571	573	553	539	532	533
	<i>growth in %</i>	2.9	1.2	0.5	1.1	2.6	0.3	-3.4	-2.5	-1.3	0.1
Gross capital formation	<i>bill. CZK 2000</i>	767	841	921	895	753	789	806	833	878	938
	<i>growth in %</i>	-0.8	9.6	9.4	-2.8	-15.8	4.7	2.3	3.3	5.4	6.9
– Gross fixed capital formation	<i>bill. CZK 2000</i>	729	773	856	844	777	742	747	771	814	873
	<i>growth in %</i>	1.8	6.0	10.8	-1.5	-7.9	-4.6	0.7	3.2	5.6	7.2
– Change in stocks and valuables	<i>bill. CZK 2000</i>	38	69	64	51	-24	47	59	62	63	65
Exports of goods and services	<i>bill. CZK 2000</i>	2275	2633	3029	3210	2865	3381	3795	4205	4656	5190
	<i>growth in %</i>	11.6	15.8	15.0	6.0	-10.8	18.0	12.2	10.8	10.7	11.5
Imports of goods and services	<i>bill. CZK 2000</i>	2301	2629	3004	3144	2810	3315	3668	4037	4469	5003
	<i>growth in %</i>	5.0	14.3	14.3	4.7	-10.6	18.0	10.6	10.1	10.7	12.0
Domestic demand	<i>bill. CZK 2000</i>	2652	2796	2943	2979	2868	2907	2910	2946	3029	3150
	<i>growth in %</i>	1.7	5.4	5.2	1.2	-3.7	1.4	0.1	1.2	2.8	4.0
Methodological discrepancy²⁾	<i>bill. CZK 2000</i>	6	5	3	2	17	30	17	4	-4	-4
Real gross domestic income	<i>bill. CZK 2000</i>	2712	2869	3074	3110	3031	3049	3045	3114	3221	3357
	<i>growth in %</i>	5.0	5.8	7.1	1.2	-2.5	0.6	-0.2	2.3	3.4	4.2
Contribution to GDP growth³⁾											
– Domestic demand	<i>percent. points</i>	1.7	5.3	5.1	1.2	-3.6	1.3	0.1	1.2	2.7	3.8
– consumption	<i>percent. points</i>	1.9	2.8	2.5	1.9	0.4	0.3	-0.4	0.4	1.4	2.2
– gross capital formation	<i>percent. points</i>	-0.2	2.5	2.5	-0.8	-4.0	1.0	0.5	0.7	1.2	1.6
– gross fixed capital formation	<i>percent. points</i>	0.5	1.5	2.7	-0.4	-1.9	-1.0	0.2	0.7	1.2	1.5
– change in stocks	<i>percent. points</i>	-0.7	1.0	-0.1	-0.4	-2.1	2.0	0.4	0.1	0.0	0.0
– Foreign balance	<i>percent. points</i>	4.6	1.5	1.1	1.3	-0.6	1.0	1.8	1.1	0.6	0.2

¹⁾ The consumption of non-profit institutions serving households (NPISH) is included in the private consumption.

²⁾ Deterministic impact of using prices and structure of the previous year for calculation of y-o-y growth.

³⁾ Calculated on the basis of prices and structure of the previous year with perfectly additive contributions.

Table C.1.2: **Real GDP by Type of Expenditure** – quarterly
chained volumes, reference year 2000

		2010				2011			
		Q1	Q2	Q3	Q4	Q1	Q2	Q3	Q4
		<i>Prelim.</i>	<i>Prelim.</i>	<i>Prelim.</i>	<i>Prelim.</i>	<i>Estim.</i>	<i>Forecast</i>	<i>Forecast</i>	<i>Forecast</i>
Gross domestic product	<i>bill. CZK 2000</i>	711	764	757	764	727	777	771	777
	<i>growth in %</i>	1.0	2.9	2.4	2.9	2.3	1.7	1.9	1.6
	<i>growth in %¹⁾</i>	1.1	2.3	2.7	2.6	2.2	2.1	1.6	1.9
	<i>quart.growth in %¹⁾</i>	0.7	0.7	0.9	0.3	0.3	0.6	0.5	0.6
Private consumption exp.	<i>bill. CZK 2000</i>	365	387	392	395	362	385	396	406
	<i>growth in %</i>	0.3	0.9	0.5	0.1	-0.7	-0.6	1.0	2.8
Government consumption exp.	<i>bill. CZK 2000</i>	132	140	141	159	128	136	136	154
	<i>growth in %</i>	2.0	0.9	-0.2	-1.3	-3.2	-3.4	-3.7	-3.5
Gross capital formation	<i>bill. CZK 2000</i>	181	200	219	188	191	206	227	183
	<i>growth in %</i>	-8.6	2.3	14.4	11.9	5.2	3.0	3.6	-2.9
– Gross fixed capital formation	<i>bill. CZK 2000</i>	162	187	194	199	162	188	194	203
	<i>growth in %</i>	-9.4	-6.5	-0.4	-2.3	0.3	0.5	0.0	2.0
– Change in stocks and valuables	<i>bill. CZK 2000</i>	20	13	25	-11	29	18	33	-20
Exports of goods and services	<i>bill. CZK 2000</i>	786	861	837	896	908	967	926	994
	<i>growth in %</i>	18.0	20.7	15.7	17.7	15.5	12.2	10.6	10.9
Imports of goods and services	<i>bill. CZK 2000</i>	756	826	843	890	861	912	922	973
	<i>growth in %</i>	15.3	20.0	18.6	17.9	13.8	10.4	9.3	9.3
Methodological discrepancy	<i>bill. CZK 2000</i>	2	1	11	17	-2	-4	8	14
Real gross domestic income	<i>bill. CZK 2000</i>	729	777	769	774	726	772	770	776
	<i>growth in %</i>	-0.2	1.2	0.5	0.9	-0.3	-0.7	0.2	0.3

¹⁾ From seasonally and working day adjusted data

Table C.1.3: Nominal GDP by Type of Expenditure – yearly

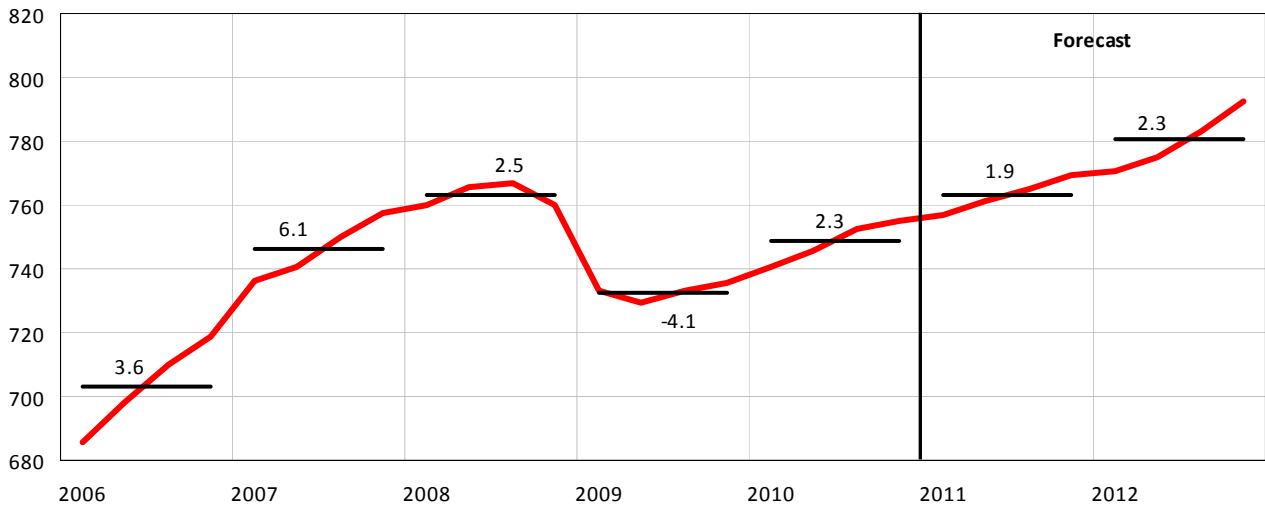
		2005	2006	2007	2008	2009	2010	2011	2012	2013	2014
							<i>Prelim.</i>	<i>Forecast</i>	<i>Forecast</i>	<i>Outlook</i>	<i>Outlook</i>
Gross domestic product	<i>bill. CZK</i>	2984	3222	3535	3689	3626	3670	3718	3904	4095	4335
	<i>growth in %</i>	6.0	8.0	9.7	4.3	-1.7	1.2	1.3	5.0	4.9	5.9
Private consumption	<i>bill. CZK</i>	1464	1562	1688	1835	1837	1869	1919	2018	2115	2247
	<i>growth in %</i>	3.4	6.6	8.1	8.7	0.1	1.8	2.7	5.2	4.8	6.2
Government consumption	<i>bill. CZK</i>	658	687	717	753	799	805	789	789	793	803
	<i>growth in %</i>	5.9	4.3	4.4	5.0	6.1	0.8	-2.0	0.0	0.5	1.2
Gross capital formation	<i>bill. CZK</i>	766	863	955	934	788	820	843	889	948	1027
	<i>growth in %</i>	-1.1	12.7	10.6	-2.2	-15.5	4.0	2.8	5.4	6.7	8.4
– Gross fixed capital formation	<i>bill. CZK</i>	742	796	890	883	814	771	781	824	878	954
	<i>growth in %</i>	2.0	7.3	11.8	-0.8	-7.8	-5.3	1.3	5.5	6.7	8.6
– Change in stocks and valuables	<i>bill. CZK</i>	24	67	65	50	-26	49	62	65	69	73
External balance	<i>bill. CZK</i>	95	110	176	168	201	175	167	208	238	258
– Exports of goods and services	<i>bill. CZK</i>	2155	2462	2830	2844	2507	2909	3240	3593	3990	4468
	<i>growth in %</i>	9.1	14.3	14.9	0.5	-11.8	16.0	11.4	10.9	11.0	12.0
– Imports of goods and services	<i>bill. CZK</i>	2060	2352	2655	2676	2305	2734	3073	3385	3751	4210
	<i>growth in %</i>	4.4	14.2	12.9	0.8	-13.8	18.6	12.4	10.1	10.8	12.2
Gross national income	<i>bill. CZK</i>	2850	3062	3288	3523	3411	3429	3477	3641	3810	4028
	<i>growth in %</i>	7.1	7.5	7.4	7.1	-3.2	0.5	1.4	4.7	4.6	5.7
Primary income balance	<i>bill. CZK</i>	-134	-160	-247	-166	-215	-241	-241	-263	-285	-307

Table C.1.4: Nominal GDP by Type of Expenditure – quarterly

		2010				2011			
		Q1	Q2	Q3	Q4	Q1	Q2	Q3	Q4
		<i>Prelim.</i>	<i>Prelim.</i>	<i>Prelim.</i>	<i>Prelim.</i>	<i>Estim.</i>	<i>Forecast</i>	<i>Forecast</i>	<i>Forecast</i>
Gross domestic product	<i>bill. CZK</i>	870	935	926	939	877	941	941	959
	<i>growth in %</i>	-0.6	1.8	2.0	1.6	0.8	0.6	1.7	2.1
Private consumption	<i>bill. CZK</i>	441	471	478	480	445	476	493	505
	<i>growth in %</i>	0.6	1.8	2.5	2.1	0.9	1.2	3.1	5.3
Government consumption	<i>bill. CZK</i>	182	197	196	231	178	193	192	226
	<i>growth in %</i>	2.1	1.5	0.7	-0.8	-2.0	-2.0	-2.0	-2.0
Gross capital formation	<i>bill. CZK</i>	189	208	228	195	200	215	237	191
	<i>growth in %</i>	-9.4	2.1	15.0	9.8	5.4	3.4	3.8	-1.6
– Gross fixed capital formation	<i>bill. CZK</i>	169	195	202	206	169	196	203	212
	<i>growth in %</i>	-10.9	-7.2	-0.5	-2.8	0.4	0.8	0.7	2.9
– Change in stocks and valuables	<i>bill. CZK</i>	21	13	26	-12	30	19	34	-21
External balance	<i>bill. CZK</i>	58	60	23	33	55	57	19	35
– Exports of goods and services	<i>bill. CZK</i>	676	750	719	764	768	828	795	849
	<i>growth in %</i>	9.4	19.3	17.7	17.5	13.6	10.4	10.6	11.2
– Imports of goods and services	<i>bill. CZK</i>	618	689	696	731	713	771	776	814
	<i>growth in %</i>	8.9	21.3	23.6	20.4	15.4	11.8	11.5	11.4

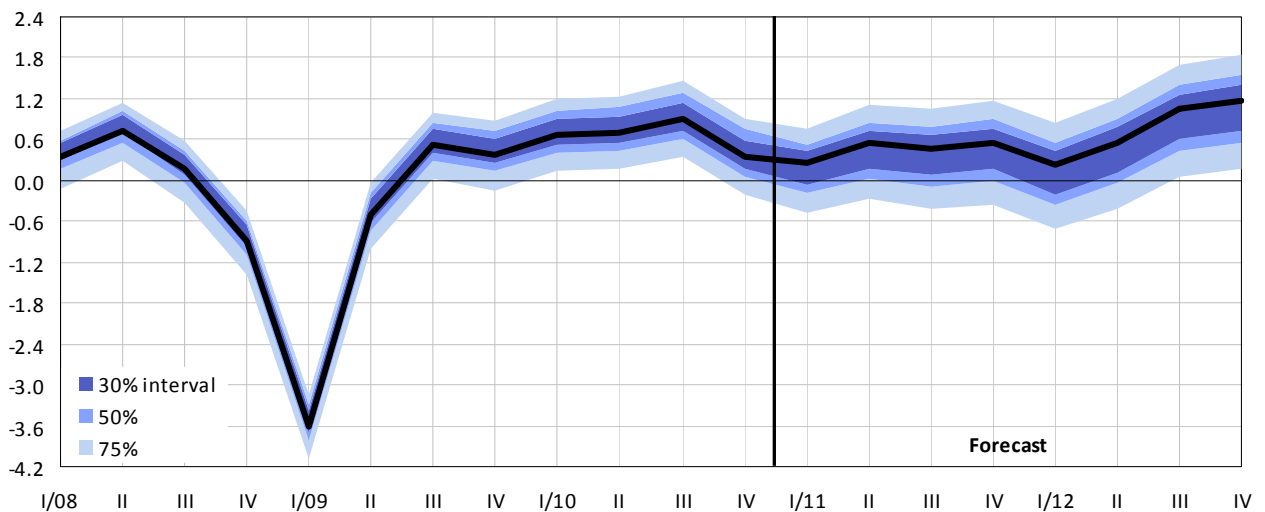
Graph C.1.1: **Gross Domestic Product (real)**

chained volumes, bill. CZK in const. prices of 2000, seasonally adjusted



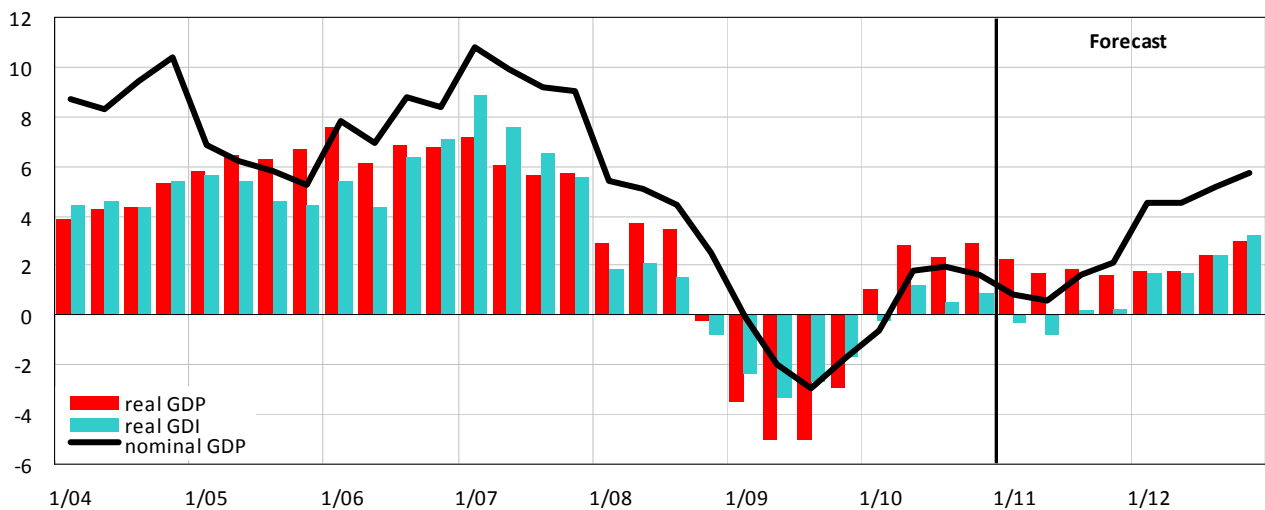
Graph C.1.2: **Gross Domestic Product (real)**

QoQ growth rate, in %, seasonally adjusted

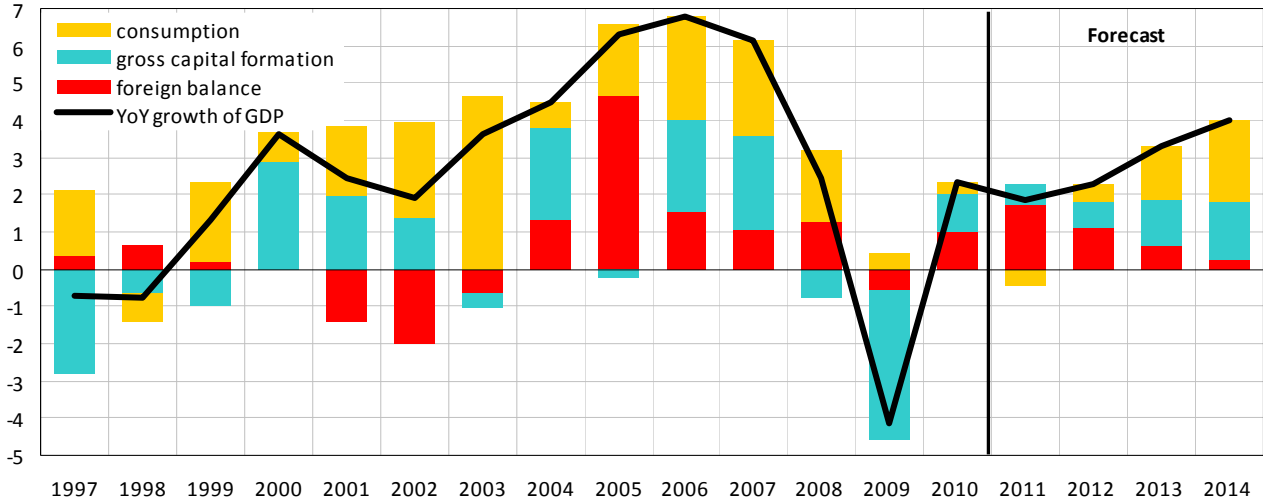


Graph C.1.3: **Gross Domestic Product and Real Gross Domestic Income**

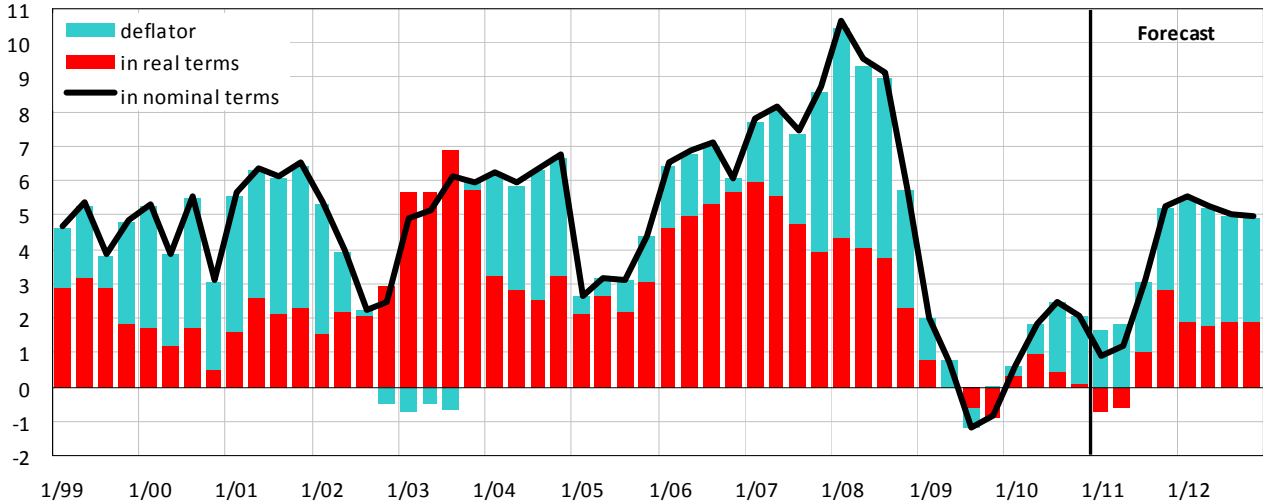
YoY growth rate, in %



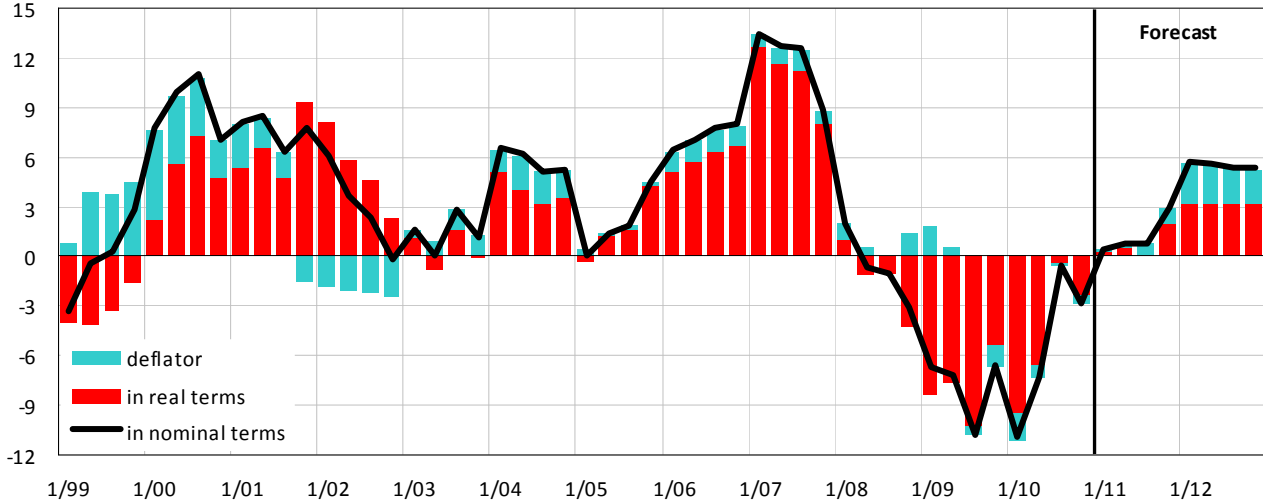
Graph C.1.4: **Gross Domestic Product – contributions to YoY growth**
in constant prices, decomposition of the YoY growth, in percentage points



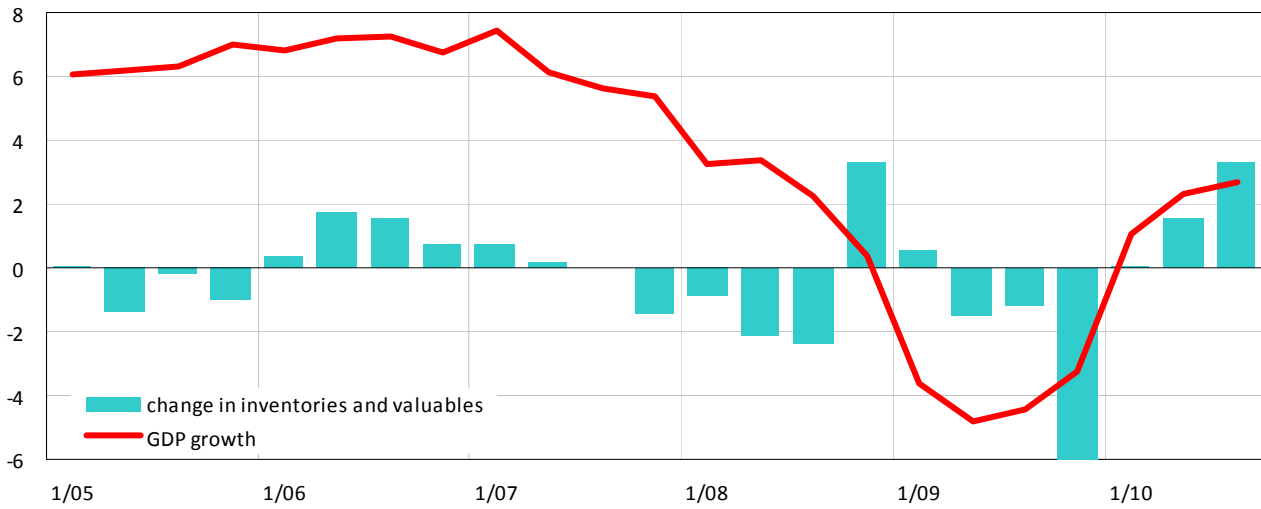
Graph C.1.5: **Private Consumption (incl. NPISH)**
YoY growth rate, in %



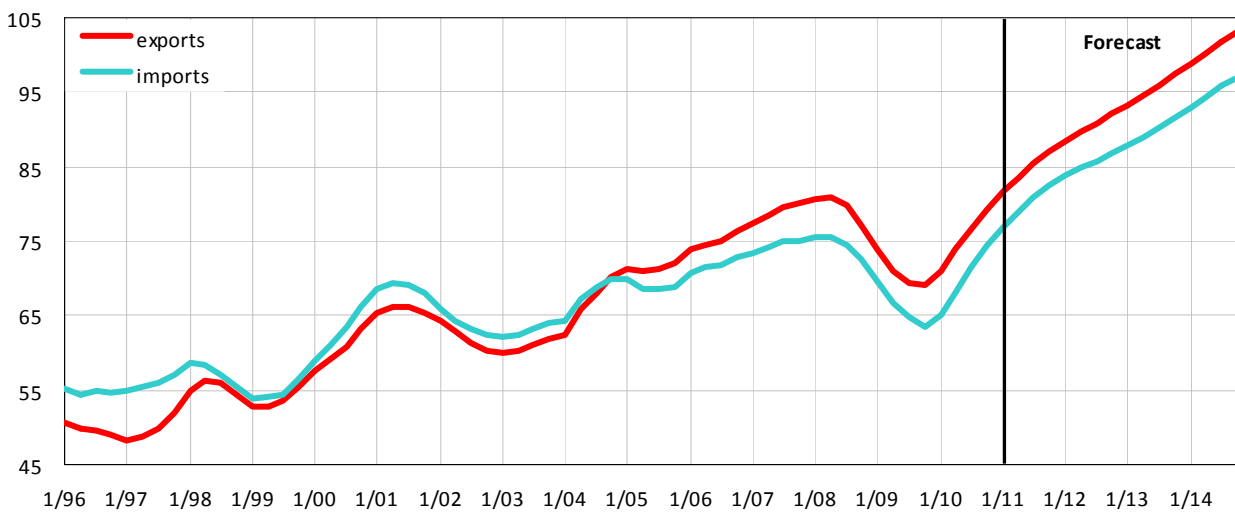
Graph C.1.6: **Gross Fixed Capital Formation**
YoY growth rate, in %



Graph C.1.7: **Change in Inventories and Valuables (real)**
 seasonally adjusted, contributions to YoY growth of GDP in p.p.



Graph C.1.8: **Ratio of Exports and Imports of Goods and Services to GDP (nominal)**
 yearly moving sums, in %



Graph C.1.9: **GDP – Income Structure**
 yearly moving sums, in %

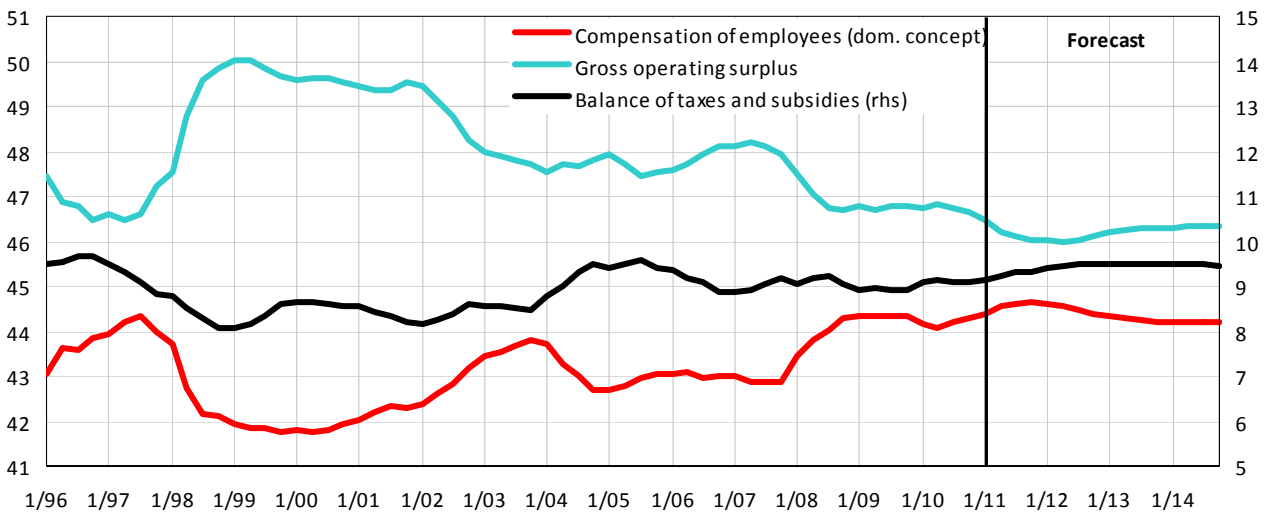


Table C.1.5: GDP by Type of Income – yearly

		2005	2006	2007	2008	2009	2010	2011	2012	2013	2014
							<i>Prelim.</i>	<i>Forecast</i>	<i>Forecast</i>	<i>Outlook</i>	<i>Outlook</i>
GDP	<i>bill. CZK</i>	2984	3222	3535	3689	3626	3670	3718	3904	4095	4335
	<i>growth in %</i>	6.0	8.0	9.7	4.3	-1.7	1.2	1.3	5.0	4.9	5.9
Balance of taxes and subsidies	<i>bill. CZK</i>	281	285	325	333	322	333	347	371	388	409
	<i>growth in %</i>	5.1	1.6	13.8	2.5	-3.2	3.4	4.0	7.0	4.5	5.6
– Taxes on production and imports	<i>bill. CZK</i>	353	363	407	418	424	433	448	475	495	520
	<i>growth in %</i>	6.4	2.9	12.0	2.9	1.4	2.2	3.5	6.0	4.2	5.0
– Subsidies on production	<i>bill. CZK</i>	72	78	82	85	102	100	101	104	107	110
	<i>growth in %</i>	12.2	7.8	5.4	4.1	19.3	-1.9	1.8	2.5	3.0	3.0
Compensation of employees	<i>bill. CZK</i>	1285	1386	1516	1633	1608	1625	1660	1732	1811	1917
	<i>growth in %</i>	6.9	7.9	9.4	7.7	-1.6	1.1	2.1	4.4	4.5	5.9
– Wages and salaries	<i>bill. CZK</i>	970	1047	1145	1245	1244	1245	1272	1327	1392	1473
	<i>growth in %</i>	6.9	7.9	9.4	8.7	0.0	0.1	2.1	4.4	4.9	5.9
– Social security contributions	<i>bill. CZK</i>	315	339	371	389	363	380	388	405	419	444
	<i>growth in %</i>	6.7	7.8	9.5	4.7	-6.6	4.6	2.1	4.4	3.4	5.9
Gross operating surplus	<i>bill. CZK</i>	1418	1551	1694	1722	1696	1711	1711	1801	1896	2009
	<i>growth in %</i>	5.4	9.3	9.3	1.7	-1.5	0.9	0.0	5.2	5.3	5.9
– Consumption of capital	<i>bill. CZK</i>	554	576	611	639	655	662	679	699	720	742
	<i>growth in %</i>	3.0	4.1	6.1	4.5	2.4	1.1	2.5	3.0	3.0	3.0
– Net operating surplus	<i>bill. CZK</i>	865	974	1083	1083	1041	1049	1033	1102	1176	1267
	<i>growth in %</i>	7.0	12.7	11.1	0.0	-3.9	0.7	-1.5	6.7	6.7	7.7

Table C.1.6: GDP by Type of Income – quarterly

		2010				2011			
		Q1	Q2	Q3	Q4	Q1	Q2	Q3	Q4
		<i>Prelim.</i>	<i>Prelim.</i>	<i>Prelim.</i>	<i>Prelim.</i>	<i>Estimate</i>	<i>Forecast</i>	<i>Forecast</i>	<i>Forecast</i>
GDP	<i>bill. CZK</i>	870	935	926	939	877	941	941	959
	<i>growth in %</i>	-0.6	1.8	2.0	1.6	0.8	0.6	1.7	2.1
Balance of taxes and subsidies	<i>bill. CZK</i>	78	90	93	72	82	93	96	76
	<i>growth in %</i>	10.4	1.9	0.2	2.6	4.0	3.9	3.8	4.4
Compensation of employees	<i>bill. CZK</i>	387	401	402	437	393	409	410	447
	<i>growth in %</i>	-2.2	0.8	3.3	2.5	1.8	2.0	2.2	2.4
– Wages and salaries	<i>bill. CZK</i>	294	306	309	336	299	312	316	344
	<i>growth in %</i>	-2.4	0.4	1.2	1.0	1.8	2.0	2.2	2.4
– Social security contributions	<i>bill. CZK</i>	92	94	93	101	94	96	95	103
	<i>growth in %</i>	-1.5	2.0	11.0	7.6	1.8	2.0	2.2	2.4
Gross operating surplus	<i>bill. CZK</i>	405	445	431	429	402	439	434	436
	<i>growth in %</i>	-1.0	2.6	1.2	0.6	-0.7	-1.4	0.7	1.5