

A.6 Demography

Sources: CZSO, MoF estimates, Czech Social Security Administration

Table A.6.1: Demography
in thousands of persons, end-of-year

	2004	2005	2006	2007	2008	2009	2010	2011	2012	2013
						Estimate	Forecast	Forecast	Outlook	Outlook
Population (January 1)	10 211	10 221	10 251	10 287	10 381	10 468	10 519	10 572	10 625	10 677
growth in %	0,1	0,1	0,3	0,4	0,9	0,8	0,5	0,5	0,5	0,5
Age structure (January 1):										
(0–19)	2 219	2 184	2 155	2 131	2 123	2 117	2 109	2 099	2 091	2 089
growth in %	-1,6	-1,5	-1,3	-1,1	-0,3	-0,3	-0,4	-0,5	-0,4	-0,1
(20–59)	6 022	6 020	6 042	6 033	6 061	6 087	6 089	6 090	6 087	6 079
growth in %	0,1	0,0	0,4	-0,1	0,5	0,4	0,0	0,0	0,0	-0,1
(60 and more)	1 971	2 017	2 054	2 123	2 197	2 264	2 321	2 383	2 447	2 509
growth in %	2,0	2,3	1,9	3,4	3,5	3,0	2,5	2,7	2,7	2,6
Old-age pensioners (Jan 1)	1 933	1 965	1 985	2 024	2 061	2 102	2 145	2 182	2 218	2 253
growth in %	0,6	1,7	1,0	2,0	1,8	2,0	2,0	1,7	1,6	1,6
Old-age dependency ratios (Jan 1 in %):										
Demographic ¹⁾	32,7	33,5	34,0	35,2	36,3	37,2	38,1	39,1	40,2	41,3
Under current legislation ²⁾	32,8	32,8	33,0	33,3	33,4	33,7	34,1	34,5	34,8	35,2
Effective ³⁾	40,9	41,5	41,3	41,6	41,5	41,8	43,5	44,9	45,5	45,9
Fertility rate	1,226	1,282	1,328	1,438	1,497	1,50	1,51	1,53	1,54	1,55
Population increase	9	31	36	94	86	52	53	53	53	52
Natural increase	-10	-6	1	10	15	12	13	13	13	12
Live births	98	102	106	115	120	119	118	118	117	116
Deaths	107	108	104	105	105	107	106	105	105	104
Net migration	19	36	35	84	72	40	40	40	40	40
Immigration	53	60	68	104	78
Emigration	35	24	33	21	6

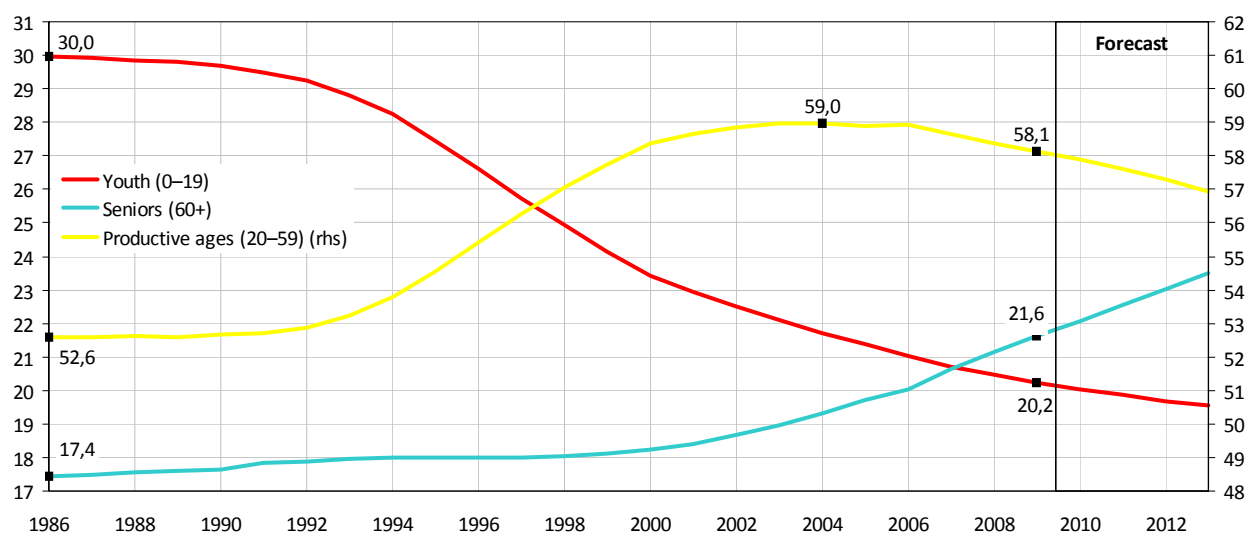
¹⁾ Demographic dependency: ratio of people in senior ages (60 and more) to people in productive ages (20 - 59).

²⁾ Dependency under current legislation: ratio of people above the official retirement age to the people over 19 below the official retirement age.

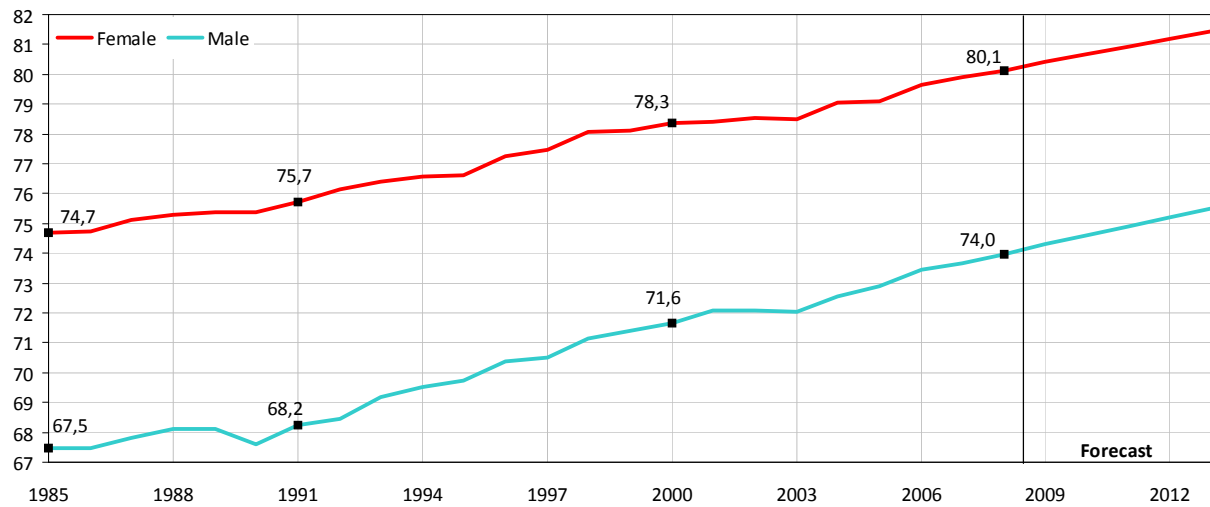
³⁾ Effective dependency: ratio of old-age pensioners to working people.

Graph A.6.1: Groups by Age

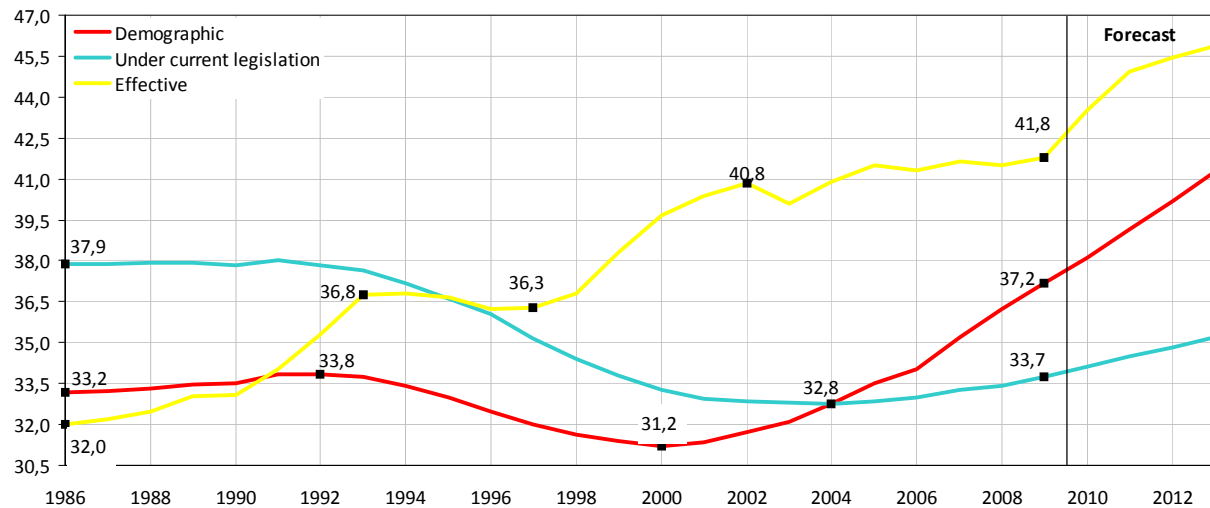
structure in per cent



Graph A.6.2: Life Expectancy
in years



Graph A.6.3: Dependency Ratios
definitions – see Table A.6.1, in %



Graph A.6.4: Old-Age Pensioners
absolute increase over a year in thousands of persons

