

3. Labour Market

Sources: CZSO, Min. of Industry and Trade, Min. of Labour and Social Affairs, MoF estimates.

Table 3.1: Employment – yearly

| | | 2001 | 2002 | 2003 | 2004 | 2005 | 2006 | 2007 | 2008 | 2009 | 2010 |
|----------------------------------------------|---------------------------------|--------------|--------------|--------------|--------------|--------------|--------------|--------------|-----------------|-----------------|-----------------|
| | | | | | | | | | <i>Estimate</i> | <i>Forecast</i> | <i>Forecast</i> |
| Labour Force Survey | | | | | | | | | | | |
| Employment | <i>average in thous.persons</i> | 4728 | 4765 | 4733 | 4707 | 4764 | 4828 | 4922 | 4998 | 4981 | 4943 |
| | <i>prev.year=100</i> | 100,4 | (100,8) | 99,3 | 99,4 | 101,2 | 101,3 | 101,9 | 101,5 | 99,7 | 99,2 |
| - employees | <i>average in thous.persons</i> | 4014 | 4002 | 3922 | 3914 | 4001 | 4048 | 4125 | 4191 | 4167 | 4123 |
| | <i>prev.year=100</i> | 100,2 | (99,7) | 98,0 | 99,8 | 102,2 | 101,2 | 101,9 | 101,6 | 99,4 | 98,9 |
| - entrepreneurs and self-employed | <i>average in thous.persons</i> | 714 | 763 | 811 | 792 | 763 | 780 | 797 | 807 | 815 | 821 |
| | <i>prev.year=100</i> | 100,8 | (106,8) | 106,4 | 97,6 | 96,3 | 102,2 | 102,2 | 101,2 | 101,0 | 100,7 |
| Unemployment | <i>average in thous.persons</i> | 418 | 374 | 399 | 426 | 410 | 371 | 276 | 231 | 271 | 309 |
| Unemployment rate | <i>average in per cent</i> | 8,1 | 7,3 | 7,8 | 8,3 | 7,9 | 7,1 | 5,3 | 4,4 | 5,2 | 5,9 |
| Labour force | <i>average in thous.persons</i> | 5146 | 5139 | 5132 | 5133 | 5174 | 5199 | 5198 | 5229 | 5252 | 5252 |
| | <i>prev.year=100</i> | 99,7 | 99,9 | 99,9 | 100,0 | 100,8 | 100,5 | 100,0 | 100,6 | 100,4 | 100,0 |
| Productive-age (15 - 64) population | <i>average in thous.persons</i> | 7165 | 7183 | 7214 | 7247 | 7270 | 7307 | 7347 | 7409 | 7428 | 7431 |
| | <i>prev.year=100</i> | 100,4 | 100,3 | 100,4 | 100,4 | 100,3 | 100,5 | 100,5 | 100,9 | 100,3 | 100,0 |
| Employment/Pop.15-64 | <i>average in per cent</i> | 66,0 | 66,3 | 65,6 | 64,9 | 65,5 | 66,1 | 67,0 | 67,5 | 67,1 | 66,5 |
| Employment rate 15-64¹⁾ | <i>average in per cent</i> | 65,2 | 65,6 | 64,9 | 64,2 | 64,8 | 65,3 | 66,1 | 66,5 | 66,2 | 65,7 |
| Labour force/Pop.15-64 | <i>average in per cent</i> | 71,8 | 71,5 | 71,1 | 70,8 | 71,2 | 71,2 | 70,8 | 70,6 | 70,7 | 70,7 |
| Participation rate 15-64²⁾ | <i>average in per cent</i> | 71,0 | 70,8 | 70,4 | 70,1 | 70,4 | 70,3 | 69,8 | 69,6 | 69,8 | 69,8 |
| SNA | | | | | | | | | | | |
| Employment (domestic concept) | <i>average in thous.persons</i> | 4963 | 4991 | 4923 | 4940 | 4992 | 5072 | 5207 | 5308 | 5290 | 5249 |
| | <i>prev.year=100</i> | 100,5 | 100,6 | 98,7 | 100,3 | 101,0 | 101,6 | 102,7 | 101,9 | 99,7 | 99,2 |
| Hours worked | <i>bill.</i> | 9,75 | 9,70 | 9,58 | 9,65 | 9,81 | 9,96 | 10,16 | 10,32 | 10,16 | 10,12 |
| | <i>prev.year=100</i> | 96,0 | 99,5 | 98,7 | 100,8 | 101,6 | 101,5 | 102,0 | 101,6 | 98,4 | 99,6 |
| Hours worked / employer | <i>hours</i> | 1965 | 1944 | 1945 | 1954 | 1965 | 1963 | 1950 | 1944 | 1920 | 1928 |
| | <i>prev.year=100</i> | 95,6 | 98,9 | 100,1 | 100,4 | 100,6 | 99,9 | 99,4 | 99,7 | 98,8 | 100,4 |
| Registered unemployment | | | | | | | | | | | |
| Unemployment | <i>average in thous.persons</i> | 443,8 | 477,5 | 521,6 | 537,4 | 514,3 | 474,8 | 392,8 | 324,6 | 374 | 419 |
| Unemployment rate³⁾ | <i>average in per cent</i> | 8,54 | 9,16 | 9,90 | 10,24 | 9,79 | . | . | . | . | . |
| | <i>average in per cent</i> | . | . | . | 9,2 | 8,97 | 8,13 | 6,62 | 5,44 | 6,3 | 7,0 |
| Registered foreign workers | | | | | | | | | | | |
| Total | <i>average in thous.persons</i> | 166,7 | 167,6 | 163,2 | 169,4 | 195,2 | 233,2 | 276,2 | 343,5 | . | . |
| | <i>prev.year=100</i> | 107,5 | 100,5 | 97,4 | 103,8 | 115,3 | 119,4 | 118,5 | 124,4 | . | . |
| - employees | <i>average in thous.persons</i> | 105,1 | 106,0 | 102,3 | 106,1 | 131,2 | 165,5 | 209,7 | 270,2 | . | . |
| | <i>prev.year=100</i> | 109,8 | 100,9 | 96,5 | 103,7 | 123,7 | 126,1 | 126,7 | 128,8 | . | . |
| - self-employed | <i>average in thous.persons</i> | 61,7 | 61,6 | 60,9 | 63,3 | 64,0 | 67,7 | 66,5 | 73,3 | . | . |
| | <i>prev.year=100</i> | 103,8 | 99,9 | 98,9 | 103,9 | 101,2 | 105,7 | 98,2 | 110,2 | . | . |

LFS: Data for 2001 are not fully comparable with following years due to harmonisation with EU standards.

¹⁾ The indicator does not contain employment over 64 years.

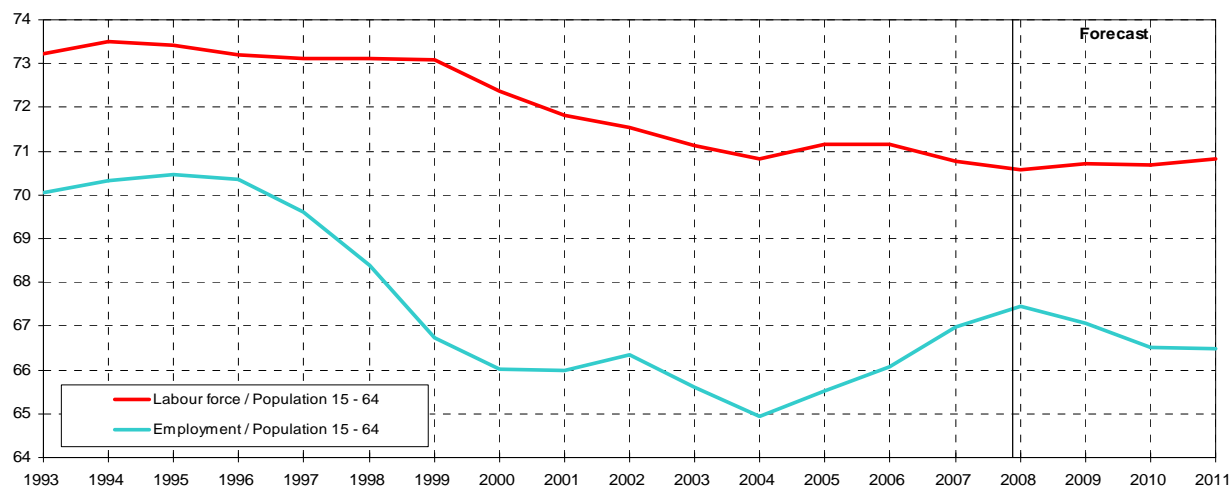
²⁾ The indicator does not contain labour force over 64 years.

³⁾ Old methodology in the first row, new methodology in the second row.

Table 3.2: Employment - quarterly

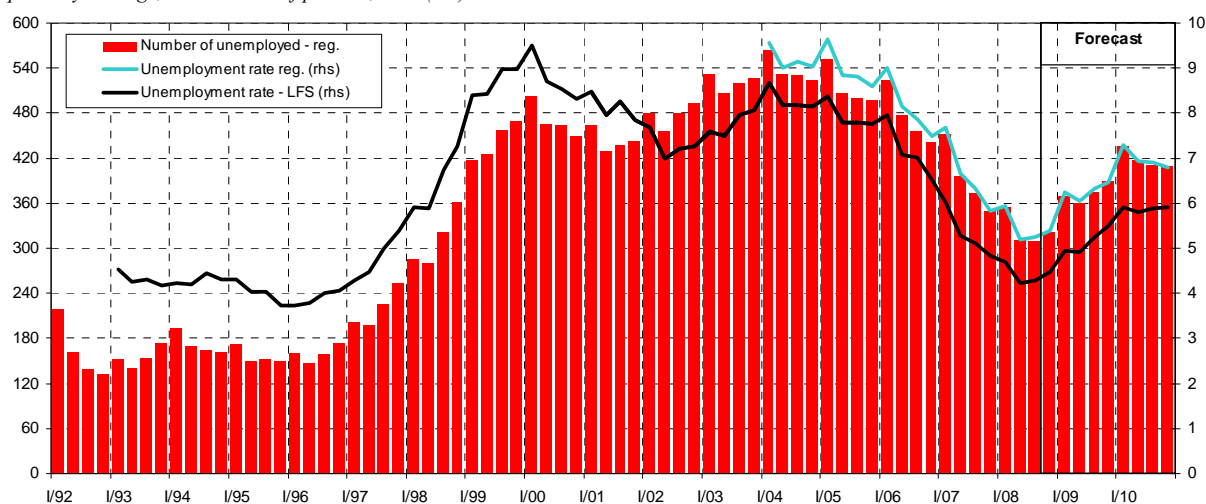
| | | 2008 | | | | 2009 | | | |
|--------------------------------------------|--------------------------|-------|-------|-------|----------|----------|----------|----------|----------|
| | | Q1 | Q2 | Q3 | Q4 | Q1 | Q2 | Q3 | Q4 |
| | | | | | Estimate | Forecast | Forecast | Forecast | Forecast |
| Labour Force Survey | | | | | | | | | |
| Employment | average in thous.persons | 4958 | 5003 | 5014 | 5016 | 4962 | 4992 | 4990 | 4980 |
| | prev.year=100 | 101,9 | 101,8 | 101,5 | 101,0 | 100,1 | 99,8 | 99,5 | 99,3 |
| - employees | average in thous.persons | 4161 | 4195 | 4206 | 4203 | 4149 | 4178 | 4176 | 4165 |
| | prev.year=100 | 102,0 | 101,9 | 101,7 | 100,8 | 99,7 | 99,6 | 99,3 | 99,1 |
| - entrepreneurs and self-employed | average in thous.persons | 797 | 808 | 808 | 813 | 814 | 814 | 815 | 816 |
| | prev.year=100 | 101,3 | 101,6 | 100,3 | 101,8 | 102,1 | 100,8 | 100,8 | 100,3 |
| Unemployment | average in thous.persons | 245 | 220 | 224 | 235 | 258 | 259 | 276 | 290 |
| Unemployment rate | average in per cent | 4,7 | 4,2 | 4,3 | 4,5 | 4,9 | 4,9 | 5,2 | 5,5 |
| Labour force | average in thous.persons | 5203 | 5223 | 5238 | 5251 | 5220 | 5251 | 5267 | 5270 |
| | prev.year=100 | 100,5 | 100,7 | 100,6 | 100,6 | 100,3 | 100,5 | 100,5 | 100,4 |
| Productive-age (15 - 64) population | average in thous.persons | 7397 | 7406 | 7413 | 7422 | 7425 | 7427 | 7430 | 7432 |
| | prev.year=100 | 100,9 | 100,8 | 100,9 | 100,8 | 100,4 | 100,3 | 100,2 | 100,1 |
| Employment/Pop.15-64 | average in per cent | 67,0 | 67,6 | 67,6 | 67,6 | 66,8 | 67,2 | 67,2 | 67,0 |
| | increase over a year | 0,6 | 0,6 | 0,4 | 0,1 | -0,2 | -0,3 | -0,5 | -0,6 |
| Employment rate 15-64 | average in per cent | 66,1 | 66,6 | 66,7 | 66,7 | 66,0 | 66,3 | 66,3 | 66,2 |
| | increase over a year | 0,6 | 0,6 | 0,4 | 0,2 | -0,2 | -0,3 | -0,4 | -0,5 |
| Labour force/Pop.15-64 | average in per cent | 70,3 | 70,5 | 70,7 | 70,7 | 70,3 | 70,7 | 70,9 | 70,9 |
| | increase over a year | -0,3 | -0,1 | -0,2 | -0,1 | 0,0 | 0,2 | 0,2 | 0,2 |
| Participation rate 15-64 | average in per cent | 69,4 | 69,6 | 69,7 | 69,8 | 69,4 | 69,8 | 70,0 | 70,1 |
| | increase over a year | -0,4 | -0,1 | -0,2 | -0,1 | 0,0 | 0,2 | 0,3 | 0,2 |
| SNA | | | | | | | | | |
| Employment (domestic concept) | average in thous.persons | 5278 | 5316 | 5327 | 5310 | 5282 | 5305 | 5301 | 5272 |
| | prev.year=100 | 102,6 | 102,3 | 101,9 | 101,0 | 100,1 | 99,8 | 99,5 | 99,3 |
| Hours worked | bill. | 2,61 | 2,67 | 2,48 | 2,57 | 2,58 | 2,63 | 2,43 | 2,52 |
| | prev.year=100 | 100,3 | 102,5 | 104,0 | 99,9 | 99,1 | 98,8 | 97,9 | 98,0 |
| Hours worked / employment | hours | 494 | 502 | 465 | 484 | 489 | 497 | 458 | 477 |
| | prev.year=100 | 97,7 | 100,2 | 102,1 | 98,9 | 99,0 | 99,0 | 98,4 | 98,7 |
| Registered unemployment | | | | | | | | | |
| Unemployment | average in thous.persons | 355,1 | 311,9 | 309,5 | 321,8 | 369 | 360 | 375 | 390 |
| Unemployment rate | average in per cent | 5,95 | 5,19 | 5,24 | 5,39 | 6,2 | 6,0 | 6,3 | 6,5 |
| Registered foreign workers | | | | | | | | | |
| Total | average in thous.persons | 315,7 | 337,1 | 355,1 | 365,9 | . | . | . | . |
| | prev.year=100 | 125,2 | 126,5 | 125,5 | 120,7 | . | . | . | . |
| - employees | average in thous.persons | 245,8 | 264,9 | 280,5 | 289,6 | . | . | . | . |
| | prev.year=100 | 131,7 | 131,7 | 129,8 | 123,2 | . | . | . | . |
| - self-employed | average in thous.persons | 69,9 | 72,2 | 74,5 | 76,4 | . | . | . | . |
| | prev.year=100 | 106,7 | 110,3 | 111,8 | 112,0 | . | . | . | . |

Graph 3.1: Ratio of Labour Force and Employment to Population (15-64) in %



Graph 3.2: Unemployment

quarterly average, in thousands of persons, in % (rhs)



Graph 3.3: Economic Output and Unemployment

YoY increase of real GDP in % and change in unemployment in thous. persons

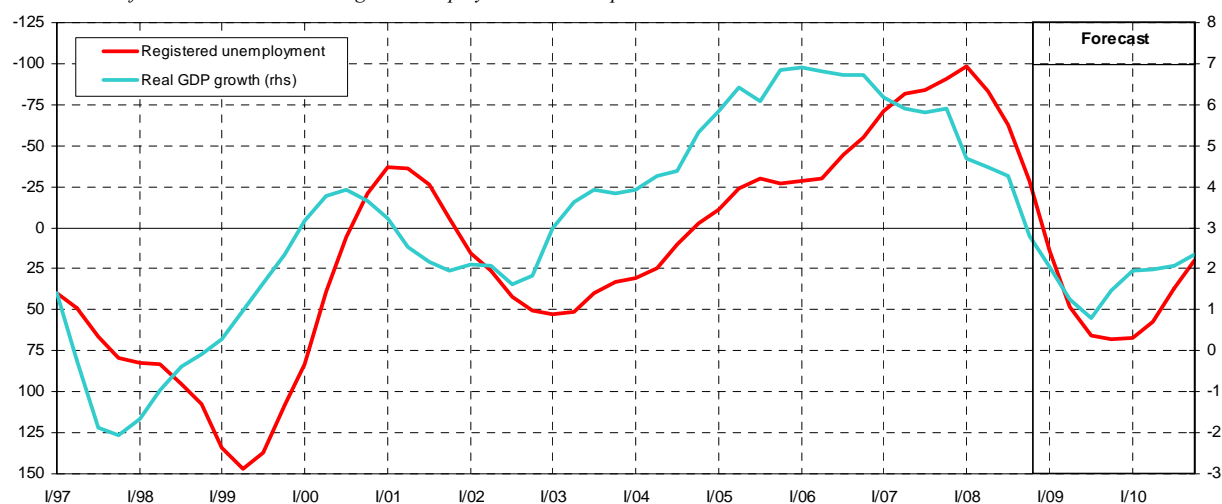


Table 3.3: Labour Market - analytical indicators

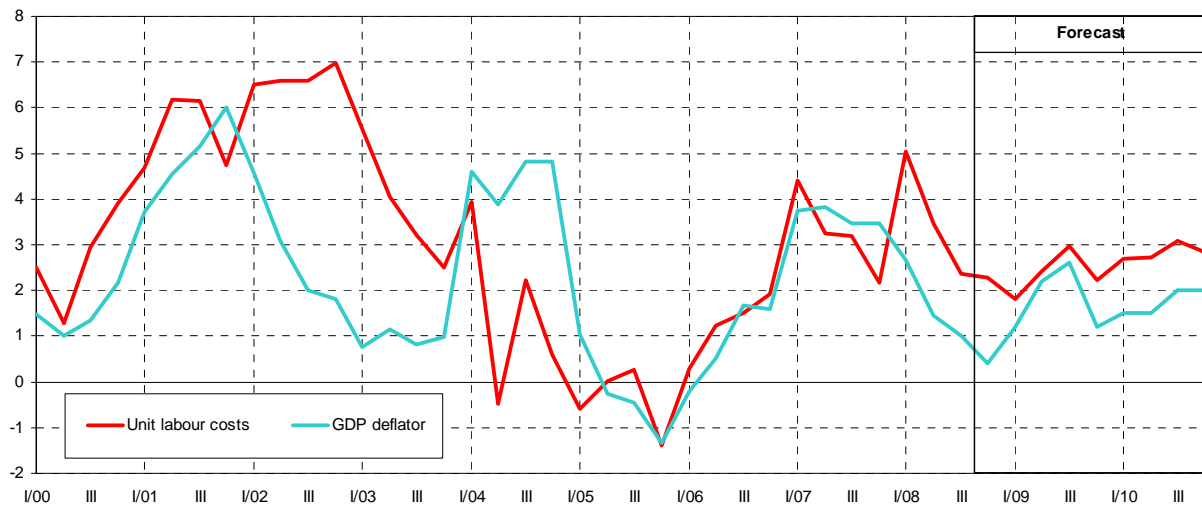
| | | 2001 | 2002 | 2003 | 2004 | 2005 | 2006 | 2007 | 2008 | 2009 | 2010 |
|-------------------------------------------|----------------|--------|--------|--------|--------|--------|--------|--------|----------|----------|----------|
| | | | | | | | | | Estimate | Forecast | Forecast |
| Compensation per employee | | | | | | | | | | | |
| - nominal | prev. year=100 | 108,1 | 107,3 | 108,2 | 106,7 | 104,6 | 106,7 | 107,3 | 105,8 | 104,1 | 105,8 |
| - real | prev. year=100 | 103,3 | 105,4 | 108,1 | 103,8 | 102,6 | 104,1 | 104,3 | 99,4 | 102,8 | 103,6 |
| Average monthly wage ¹⁾ | | | | | | | | | | | |
| - nominal | CZK | 14 793 | 15 866 | 16 917 | 18 041 | 18 992 | 20 219 | 21 694 | 23 400 | 24 600 | 26 200 |
| | prev. year=100 | 108,7 | 107,3 | 106,6 | 106,6 | 105,3 | 106,5 | 107,3 | 107,9 | 105,1 | 106,4 |
| - real | CZK 2005 | 15 788 | 16 632 | 17 716 | 18 377 | 18 992 | 19 719 | 20 573 | 20 900 | 21 700 | 22 600 |
| | prev. year=100 | 103,8 | 105,4 | 106,5 | 103,7 | 103,3 | 103,8 | 104,3 | 101,5 | 103,8 | 104,2 |
| Labour productivity | | | | | | | | | | | |
| | prev. year=100 | 102,1 | 101,1 | 104,3 | 105,1 | 105,0 | 105,4 | 103,9 | 102,5 | 101,7 | 102,9 |
| Unit labour costs ²⁾ | | | | | | | | | | | |
| | prev. year=100 | 105,9 | 106,1 | 103,8 | 101,5 | 99,5 | 101,3 | 103,2 | 103,2 | 102,4 | 102,8 |
| Compensations of employees / GDP | | | | | | | | | | | |
| | % | 42,3 | 43,2 | 43,8 | 42,7 | 43,1 | 43,1 | 42,9 | 43,8 | 43,9 | 44,2 |

¹⁾ This indicator includes only business sphere enterprises with 20 employees or more and all non-business sphere organizations.

²⁾ Ratio of nominal compensation per employee to real productivity of labour from GDP

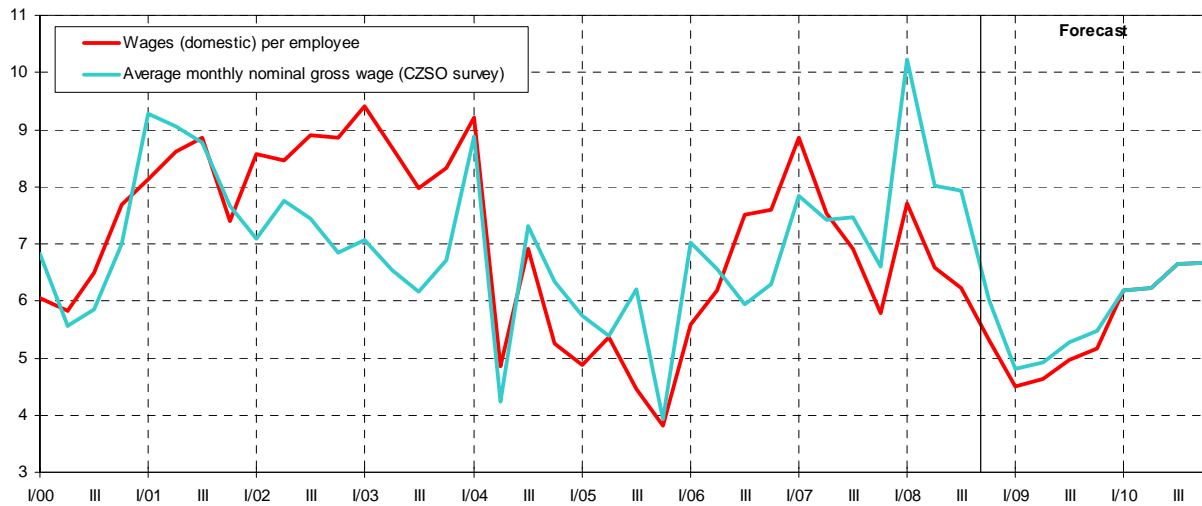
Graph 3.4: Unit Labour Costs

nominal compensation of employees (domestic concept) per unit of real GDP, prev. year = 100 %



Graph 3.5: Average Nominal Wage

prev. year = 100 %



Graph 3.6: Ratio of Bank Loans to Households to GDP

yearly moving sums of GDP, in %

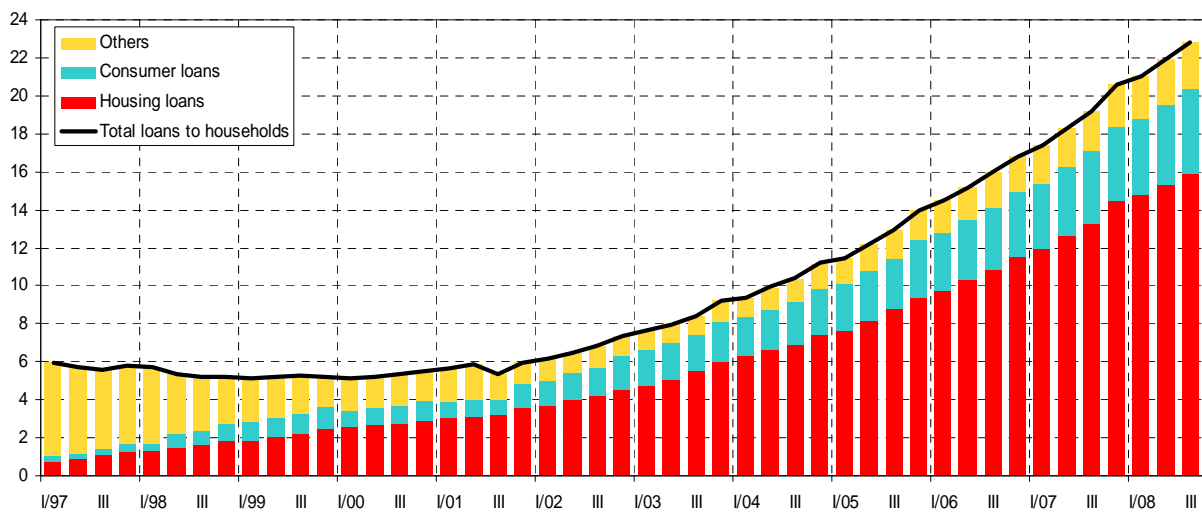


Table 3.4: **Income and Expenditures of Households – yearly**
SNA methodology – national concept

| | | 2001 | 2002 | 2003 | 2004 | 2005 | 2006 | 2007 | 2008 | 2009 | 2010 |
|-----------------------------------------------------|----------------------|--------------|--------------|--------------|--------------|--------------|--------------|--------------|-----------------|-----------------|-----------------|
| | | | | | | | | | <i>Estimate</i> | <i>Forecast</i> | <i>Forecast</i> |
| Current income | | | | | | | | | | | |
| Compensation of employees | <i>bill.CZK</i> | 982 | 1049 | 1120 | 1186 | 1273 | 1374 | 1497 | 1594 | 1651 | 1729 |
| | <i>prev.year=100</i> | 107,9 | 106,8 | 106,8 | 105,9 | 107,3 | 107,9 | 108,9 | 106,5 | 103,6 | 104,7 |
| Gross mixed income | <i>bill.CZK</i> | 391 | 395 | 425 | 449 | 446 | 469 | 495 | 517 | 535 | 561 |
| | <i>prev.year=100</i> | 104,4 | 101,2 | 107,5 | 105,7 | 99,4 | 105,2 | 105,5 | 104,4 | 103,5 | 105,0 |
| Property income received | <i>bill.CZK</i> | 103 | 98 | 97 | 109 | 120 | 137 | 157 | 177 | 188 | 201 |
| | <i>prev.year=100</i> | 101,6 | 94,9 | 98,9 | 112,7 | 109,6 | 113,9 | 114,7 | 113,0 | 106,0 | 107,0 |
| Social benefits not-in-kind | <i>bill.CZK</i> | 290 | 313 | 324 | 369 | 386 | 419 | 466 | 488 | 514 | 536 |
| | <i>prev.year=100</i> | 104,6 | 108,0 | 103,6 | . | 104,6 | 108,7 | 111,2 | 104,6 | 105,5 | 104,2 |
| Other current transfers received | <i>bill.CZK</i> | 79 | 85 | 91 | 93 | 103 | 113 | 120 | 134 | 142 | 151 |
| | <i>prev.year=100</i> | 91,2 | 107,8 | 106,8 | 102,9 | 110,1 | 109,9 | 106,4 | 111,8 | 106,0 | 106,0 |
| Current expenditure | | | | | | | | | | | |
| Property income paid | <i>bill.CZK</i> | 15 | 13 | 19 | 21 | 20 | 25 | 37 | 40 | 44 | 49 |
| | <i>prev.year=100</i> | 94,6 | 82,0 | 149,0 | 112,4 | 94,7 | 123,3 | 149,6 | 108,3 | 110,0 | 110,0 |
| Current taxes on income and property | <i>bill.CZK</i> | 106 | 115 | 128 | 138 | 140 | 140 | 156 | 145 | 150 | 158 |
| | <i>prev.year=100</i> | 105,9 | 108,0 | 111,9 | 107,6 | 101,7 | 99,8 | 111,4 | 92,8 | 103,8 | 105,2 |
| Social contributions | <i>bill.CZK</i> | 350 | 382 | 408 | 474 | 507 | 556 | 610 | 637 | 626 | 643 |
| | <i>prev.year=100</i> | 106,8 | 109,2 | 106,7 | . | 107,1 | 109,7 | 109,6 | 104,4 | 98,3 | 102,7 |
| Other current transfers paid | <i>bill.CZK</i> | 79 | 82 | 93 | 100 | 109 | 115 | 127 | 135 | 141 | 147 |
| | <i>prev.year=100</i> | 108,5 | 103,4 | 113,7 | 107,2 | 109,2 | 105,9 | 109,9 | 106,5 | 104,5 | 104,5 |
| Gross disposable income | <i>bill.CZK</i> | 1293 | 1348 | 1409 | 1474 | 1551 | 1675 | 1805 | 1953 | 2069 | 2181 |
| | <i>prev.year=100</i> | 105,0 | 104,3 | 104,5 | 104,6 | 105,3 | 108,0 | 107,7 | 108,2 | 105,9 | 105,4 |
| Final consumption | <i>bill.CZK</i> | 1207 | 1248 | 1317 | 1399 | 1443 | 1543 | 1669 | 1815 | 1892 | 1986 |
| | <i>prev.year=100</i> | 106,4 | 103,4 | 105,6 | 106,2 | 103,1 | 107,0 | 108,2 | 108,7 | 104,2 | 105,0 |
| Change in net share in pension funds | <i>bill.CZK</i> | 9 | 11 | 13 | 17 | 19 | 23 | 26 | 25 | 27 | 29 |
| Gross savings | <i>bill.CZK</i> | 96 | 112 | 105 | 92 | 128 | 156 | 162 | 163 | 203 | 224 |
| Capital transfers (income (-) / expenditure (+)) | <i>bill.CZK</i> | -17 | -36 | -21 | -23 | -25 | -23 | -23 | -38 | -24 | -24 |
| Gross capital formation | <i>bill.CZK</i> | 121 | 129 | 122 | 132 | 136 | 153 | 187 | 194 | 198 | 208 |
| | <i>prev.year=100</i> | 102,7 | 106,8 | 94,9 | 107,8 | 102,6 | 112,6 | 122,3 | 103,9 | 102,0 | 105,0 |
| Change in financial assets and liab. | <i>bill.CZK</i> | -5 | 23 | 6 | -18 | 20 | 25 | -3 | -8 | 29 | 40 |
| Real disposable income | <i>bill.CZK 2000</i> | 1380 | 1414 | 1475 | 1501 | 1551 | 1634 | 1712 | 1741 | 1821 | 1880 |
| | <i>prev.year=100</i> | 100,3 | 102,4 | 104,4 | 101,8 | 103,3 | 105,3 | 104,8 | 101,7 | 104,6 | 103,3 |
| Gross savings rate | % | 7,4 | 8,3 | 7,4 | 6,2 | 8,2 | 9,3 | 9,0 | 8,3 | 9,8 | 10,3 |

Government payments to social security systems for non-active population have been imputed to social benefits and social security contributions since 2004.

Graph 3.7: **Gross Savings Rate of Households**
in % of disposable income

