

## C.3 Labour Market

Sources: CZSO, Ministry of Industry and Trade, Ministry of Labour and Social Affairs, MoF estimates

Table C.3.1: Employment – yearly

		2005	2006	2007	2008	2009	2010	2011	2012	2013	2014
								Forecast	Forecast	Outlook	Outlook
<b>Labour Force Survey</b>											
<b>Employment</b>	<i>av. in thous.persons</i>	<b>4764</b>	<b>4828</b>	<b>4922</b>	<b>5002</b>	<b>4934</b>	<b>4885</b>	<b>4905</b>	<b>4896</b>	<b>4901</b>	<b>4927</b>
	<i>growth in %</i>	1.2	1.3	1.9	1.6	-1.4	-1.0	0.4	-0.2	0.1	0.5
<b>– employees</b>	<i>av. in thous.persons</i>	<b>4001</b>	<b>4048</b>	<b>4125</b>	<b>4196</b>	<b>4107</b>	<b>4019</b>	<b>4032</b>	<b>4024</b>	<b>4022</b>	<b>4037</b>
	<i>growth in %</i>	2.2	1.2	1.9	1.7	-2.1	-2.1	0.3	-0.2	-0.1	0.4
<b>– entrepreneurs and self-employed</b>	<i>av. in thous.persons</i>	<b>763</b>	<b>780</b>	<b>797</b>	<b>807</b>	<b>827</b>	<b>866</b>	<b>874</b>	<b>872</b>	<b>879</b>	<b>890</b>
	<i>growth in %</i>	-3.7	2.2	2.2	1.2	2.5	4.7	0.9	-0.2	0.8	1.2
<b>Unemployment</b>	<i>av. in thous.persons</i>	<b>410</b>	<b>371</b>	<b>276</b>	<b>230</b>	<b>352</b>	<b>384</b>	<b>362</b>	<b>366</b>	<b>365</b>	<b>355</b>
<b>Unemployment rate</b>	<i>average in per cent</i>	<b>7.9</b>	<b>7.1</b>	<b>5.3</b>	<b>4.4</b>	<b>6.7</b>	<b>7.3</b>	<b>6.9</b>	<b>6.9</b>	<b>6.9</b>	<b>6.7</b>
<b>Labour force</b>	<i>av. in thous.persons</i>	<b>5174</b>	<b>5199</b>	<b>5198</b>	<b>5232</b>	<b>5286</b>	<b>5269</b>	<b>5268</b>	<b>5262</b>	<b>5266</b>	<b>5282</b>
	<i>growth in %</i>	0.8	0.5	0.0	0.7	1.0	-0.3	0.0	-0.1	0.1	0.3
<b>Population aged 15–64</b>	<i>av. in thous.persons</i>	<b>7270</b>	<b>7307</b>	<b>7347</b>	<b>7410</b>	<b>7431</b>	<b>7399</b>	<b>7348</b>	<b>7291</b>	<b>7235</b>	<b>7185</b>
	<i>growth in %</i>	0.3	0.5	0.5	0.9	0.3	-0.4	-0.7	-0.8	-0.8	-0.7
<b>Employment/Pop. 15–64</b>	<i>average in per cent</i>	<b>65.5</b>	<b>66.1</b>	<b>67.0</b>	<b>67.5</b>	<b>66.4</b>	<b>66.0</b>	<b>66.8</b>	<b>67.2</b>	<b>67.7</b>	<b>68.6</b>
<b>Employment rate 15–64<sup>1)</sup></b>	<i>average in per cent</i>	<b>64.8</b>	<b>65.3</b>	<b>66.1</b>	<b>66.6</b>	<b>65.4</b>	<b>65.0</b>	<b>65.7</b>	<b>66.0</b>	<b>66.6</b>	<b>67.4</b>
<b>Labour force/Pop. 15–64</b>	<i>average in per cent</i>	<b>71.2</b>	<b>71.2</b>	<b>70.8</b>	<b>70.6</b>	<b>71.1</b>	<b>71.2</b>	<b>71.7</b>	<b>72.2</b>	<b>72.8</b>	<b>73.5</b>
<b>Participation rate 15–64<sup>2)</sup></b>	<i>average in per cent</i>	<b>70.4</b>	<b>70.3</b>	<b>69.8</b>	<b>69.7</b>	<b>70.1</b>	<b>70.2</b>	<b>70.6</b>	<b>71.0</b>	<b>71.6</b>	<b>72.4</b>
<b>SNA</b>											
<b>Employment (domestic concept)</b>	<i>av. in thous.persons</i>	<b>4992</b>	<b>5088</b>	<b>5224</b>	<b>5288</b>	<b>5226</b>	<b>5185</b>	<b>5202</b>	<b>5190</b>	<b>5195</b>	<b>5223</b>
	<i>growth in %</i>	1.0	1.9	2.7	1.2	-1.2	-0.8	0.3	-0.2	0.1	0.5
<b>Hours worked</b>	<i>bill. hours</i>	<b>9.81</b>	<b>9.97</b>	<b>10.18</b>	<b>10.37</b>	<b>9.88</b>	<b>9.89</b>	<b>9.90</b>	<b>9.81</b>	<b>9.73</b>	<b>9.71</b>
	<i>growth in %</i>	1.6	1.7	2.0	1.9	-4.7	0.1	0.1	-0.9	-0.8	-0.2
<b>Hours worked / employment</b>	<i>hours</i>	<b>1965</b>	<b>1960</b>	<b>1948</b>	<b>1962</b>	<b>1891</b>	<b>1907</b>	<b>1903</b>	<b>1890</b>	<b>1873</b>	<b>1859</b>
	<i>growth in %</i>	0.6	-0.2	-0.6	0.7	-3.6	0.9	-0.2	-0.7	-0.9	-0.8
<b>Registered unemployment</b>											
<b>Unemployment</b>	<i>av. in thous.persons</i>	<b>514.3</b>	<b>474.8</b>	<b>392.8</b>	<b>324.6</b>	<b>465.6</b>	<b>528.7</b>	<b>506</b>	<b>493</b>	<b>493</b>	<b>475</b>
<b>Unemployment rate</b>	<i>average in per cent</i>	<b>8.97</b>	<b>8.13</b>	<b>6.62</b>	<b>5.45</b>	<b>7.98</b>	<b>9.01</b>	<b>8.5</b>	<b>8.4</b>	<b>8.4</b>	<b>8.1</b>
<b>Registered foreign workers</b>											
<b>Total</b>	<i>av. in thous.persons</i>	<b>195.2</b>	<b>233.2</b>	<b>276.2</b>	<b>343.5</b>	<b>335.4</b>	<b>313.5</b>	.	.	.	.
	<i>growth in %</i>	15.3	19.4	18.5	24.4	-2.3	-6.5	.	.	.	.
<b>– employees</b>	<i>av. in thous.persons</i>	<b>131.2</b>	<b>165.5</b>	<b>209.7</b>	<b>270.2</b>	<b>252.6</b>	<b>219.6</b>	.	.	.	.
	<i>growth in %</i>	23.7	26.1	26.7	28.8	-6.5	-13.0	.	.	.	.
<b>– self-employed</b>	<i>av. in thous.persons</i>	<b>64.0</b>	<b>67.7</b>	<b>66.5</b>	<b>73.3</b>	<b>82.8</b>	<b>93.9</b>	.	.	.	.
	<i>growth in %</i>	1.2	5.7	-1.8	10.2	13.0	13.4	.	.	.	.

<sup>1)</sup> The indicator does not contain employment over 64 years.

<sup>2)</sup> The indicator does not contain labour force over 64 years.

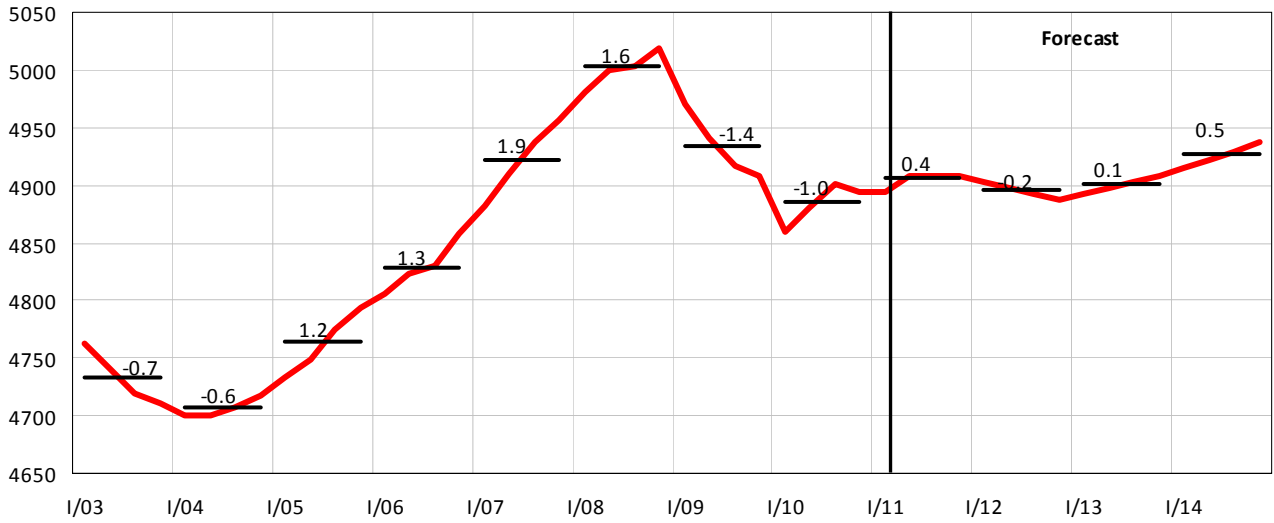
Table C.3.2: Employment – quarterly

		2010				2011			
		Q1	Q2	Q3	Q4	Q1	Q2	Q3	Q4
								Estimate	Forecast
<b>Labour Force Survey</b>									
<b>Employment</b>	<i>av. in thous. persons</i>	<b>4829</b>	<b>4881</b>	<b>4912</b>	<b>4919</b>	<b>4864</b>	<b>4908</b>	<b>4918</b>	<b>4931</b>
	<i>YoY growth in %</i>	-2.4	-1.2	-0.2	-0.2	0.7	0.6	0.1	0.3
	<i>QoQ growth in %</i>	-0.5	0.2	0.3	0.1	0.0	0.1	0.0	0.0
<b>– employees</b>	<i>av. in thous. persons</i>	<b>3992</b>	<b>4013</b>	<b>4035</b>	<b>4036</b>	<b>3989</b>	<b>4034</b>	<b>4042</b>	<b>4061</b>
	<i>growth in %</i>	-3.2	-2.6	-1.3	-1.5	-0.1	0.5	0.2	0.6
<b>– entrepreneurs and self-employed</b>	<i>av. in thous. persons</i>	<b>837</b>	<b>868</b>	<b>876</b>	<b>883</b>	<b>875</b>	<b>874</b>	<b>876</b>	<b>871</b>
	<i>growth in %</i>	1.7	5.5	5.2	6.3	4.6	0.7	-0.1	-1.4
<b>Unemployment</b>	<i>av. in thous. persons</i>	<b>423</b>	<b>375</b>	<b>374</b>	<b>363</b>	<b>376</b>	<b>355</b>	<b>363</b>	<b>355</b>
<b>Unemployment rate</b>	<i>average in per cent</i>	<b>8.0</b>	<b>7.1</b>	<b>7.1</b>	<b>6.9</b>	<b>7.2</b>	<b>6.7</b>	<b>6.9</b>	<b>6.7</b>
<b>Labour force</b>	<i>av. in thous. persons</i>	<b>5252</b>	<b>5256</b>	<b>5286</b>	<b>5282</b>	<b>5241</b>	<b>5263</b>	<b>5281</b>	<b>5286</b>
	<i>growth in %</i>	0.0	-0.4	-0.4	-0.6	-0.2	0.1	-0.1	0.1
<b>Population aged 15–64</b>	<i>av. in thous. persons</i>	<b>7412</b>	<b>7406</b>	<b>7393</b>	<b>7387</b>	<b>7371</b>	<b>7354</b>	<b>7341</b>	<b>7328</b>
	<i>growth in %</i>	-0.3	-0.3	-0.5	-0.6	-0.6	-0.7	-0.7	-0.8
<b>Employment/Pop. 15–64</b>	<i>average in per cent</i>	<b>65.2</b>	<b>65.9</b>	<b>66.4</b>	<b>66.6</b>	<b>66.0</b>	<b>66.7</b>	<b>67.0</b>	<b>67.3</b>
	<i>increase over a year</i>	-1.4	-0.6	0.2	0.3	0.8	0.8	0.6	0.7
<b>Employment rate 15–64</b>	<i>average in per cent</i>	<b>64.1</b>	<b>64.9</b>	<b>65.4</b>	<b>65.5</b>	<b>65.0</b>	<b>65.7</b>	<b>65.9</b>	<b>66.2</b>
	<i>increase over a year</i>	-1.4	-0.5	0.2	0.3	0.9	0.8	0.5	0.7
<b>Labour force/Pop. 15–64</b>	<i>average in per cent</i>	<b>70.9</b>	<b>71.0</b>	<b>71.5</b>	<b>71.5</b>	<b>71.1</b>	<b>71.6</b>	<b>71.9</b>	<b>72.1</b>
	<i>increase over a year</i>	0.2	0.0	0.1	0.0	0.2	0.6	0.4	0.6
<b>Participation rate 15–64</b>	<i>average in per cent</i>	<b>69.8</b>	<b>70.0</b>	<b>70.5</b>	<b>70.4</b>	<b>70.1</b>	<b>70.5</b>	<b>70.9</b>	<b>71.0</b>
	<i>increase over a year</i>	0.2	0.0	0.1	0.0	0.3	0.6	0.4	0.6
<b>SNA</b>									
<b>Employment (domestic concept)</b>	<i>av. in thous. persons</i>	<b>5126</b>	<b>5176</b>	<b>5215</b>	<b>5224</b>	<b>5162</b>	<b>5205</b>	<b>5213</b>	<b>5227</b>
	<i>growth in %</i>	-2.1	-1.0	-0.1	0.0	0.7	0.6	0.0	0.1
<b>Hours worked</b>	<i>bill. hours</i>	<b>2.46</b>	<b>2.54</b>	<b>2.39</b>	<b>2.50</b>	<b>2.46</b>	<b>2.56</b>	<b>2.39</b>	<b>2.49</b>
	<i>growth in %</i>	-1.9	-0.9	1.7	1.6	0.0	0.6	0.0	-0.1
<b>Hours worked / employment</b>	<i>hours</i>	<b>480</b>	<b>492</b>	<b>458</b>	<b>478</b>	<b>476</b>	<b>492</b>	<b>458</b>	<b>477</b>
	<i>growth in %</i>	0.2	0.1	1.8	1.5	-0.7	0.0	0.0	-0.2
<b>Registered unemployment</b>									
<b>Unemployment</b>	<i>av. in thous. persons</i>	<b>571.1</b>	<b>530.5</b>	<b>502.4</b>	<b>510.9</b>	<b>564.5</b>	<b>506</b>	<b>481</b>	<b>473</b>
<b>Unemployment rate</b>	<i>average in per cent</i>	<b>9.75</b>	<b>9.00</b>	<b>8.59</b>	<b>8.69</b>	<b>9.57</b>	<b>8.48</b>	<b>8.14</b>	<b>7.9</b>
<b>Registered foreign workers</b>									
<b>Total</b>	<i>av. in thous. persons</i>	<b>315.0</b>	<b>316.2</b>	<b>312.9</b>	<b>310.0</b>	<b>303.0</b>	<b>305.6</b>	<b>309.5</b>	.
	<i>growth in %</i>	-9.6	-6.0	-5.7	-4.6	-3.8	-3.4	-1.1	.
<b>– employees</b>	<i>av. in thous. persons</i>	<b>222.8</b>	<b>218.4</b>	<b>218.1</b>	<b>219.3</b>	<b>211.2</b>	<b>212.7</b>	<b>216.3</b>	.
	<i>growth in %</i>	-17.5	-14.3	-11.8	-7.9	-5.2	-2.6	-0.9	.
<b>– self-employed</b>	<i>av. in thous. persons</i>	<b>92.2</b>	<b>97.9</b>	<b>94.7</b>	<b>90.7</b>	<b>91.8</b>	<b>92.9</b>	<b>93.3</b>	.
	<i>growth in %</i>	17.7	20.1	11.9	4.5	-0.5	-5.1	-1.5	.

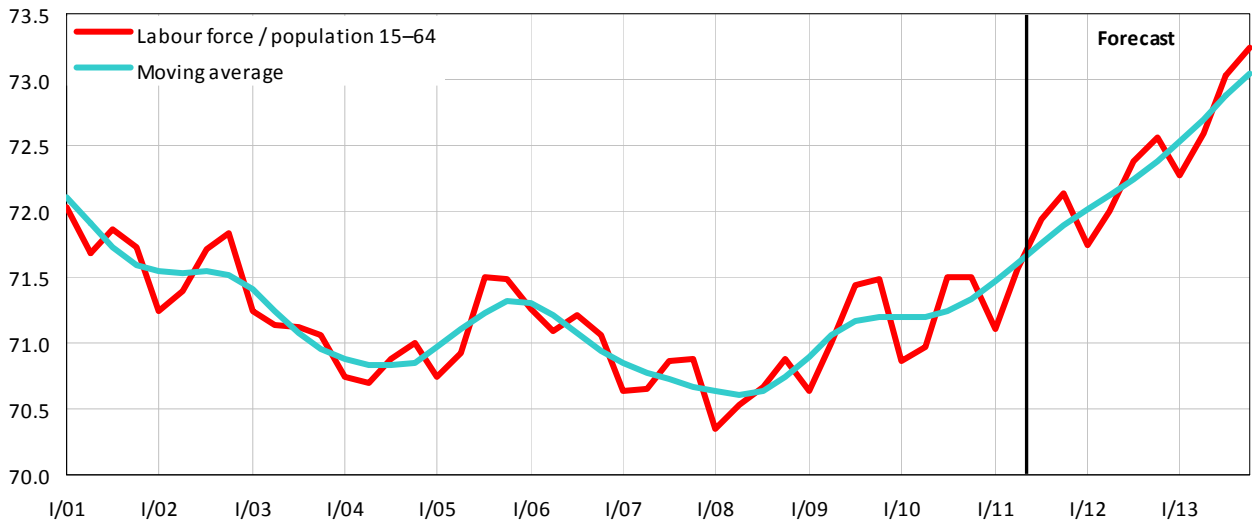
<sup>1)</sup> Seasonal adjustment done by the MoF.

**Graph C.3.1: Employment (LFS)**

Seasonally adjusted data, in thousands of persons, growth rates in %

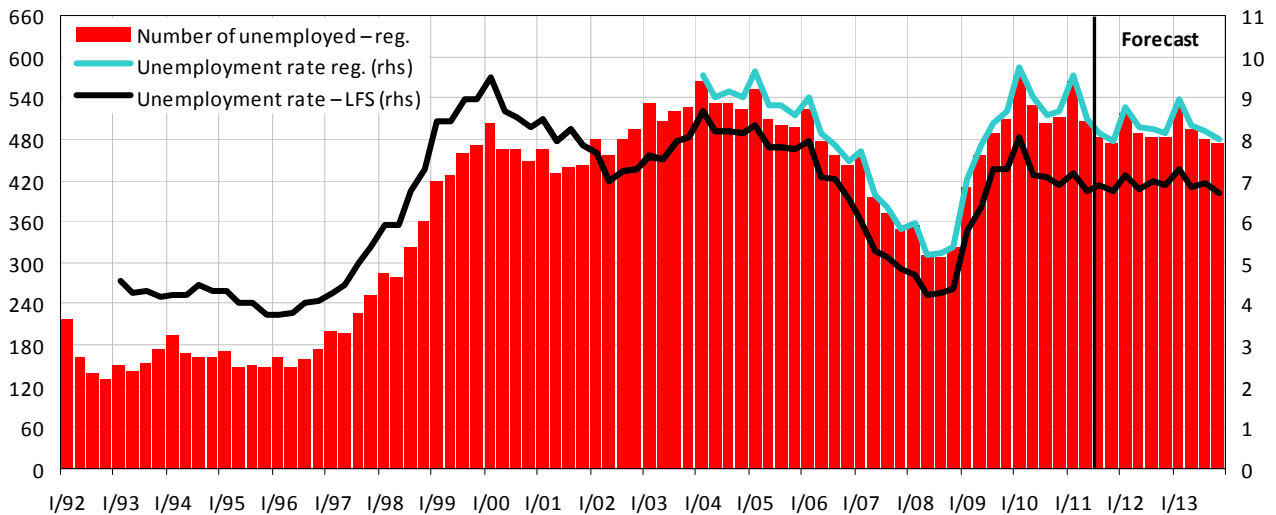


**Graph C.3.2: Ratio of Labour Force to Population aged 15–64 (in %)**



**Graph C.3.3: Unemployment**

quarterly average, in thousands of persons, in % (rhs)



### Graph C.3.4: Economic Output and Unemployment

YoY increase of real GDP in %. Change in unemployment in thousands of persons

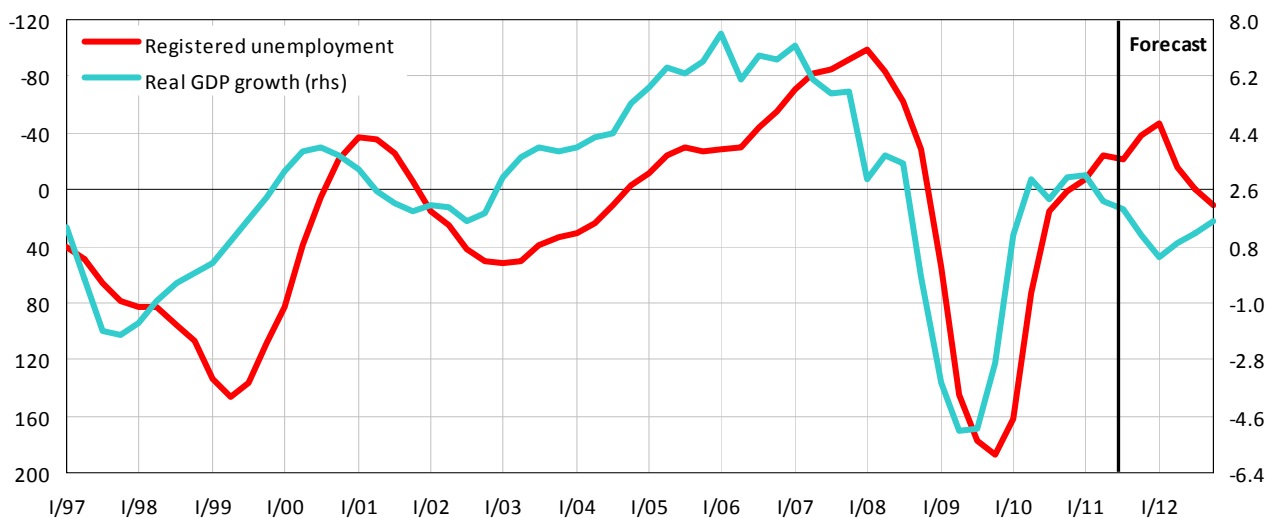


Table C.3.3: Labour Market – analytical indicators

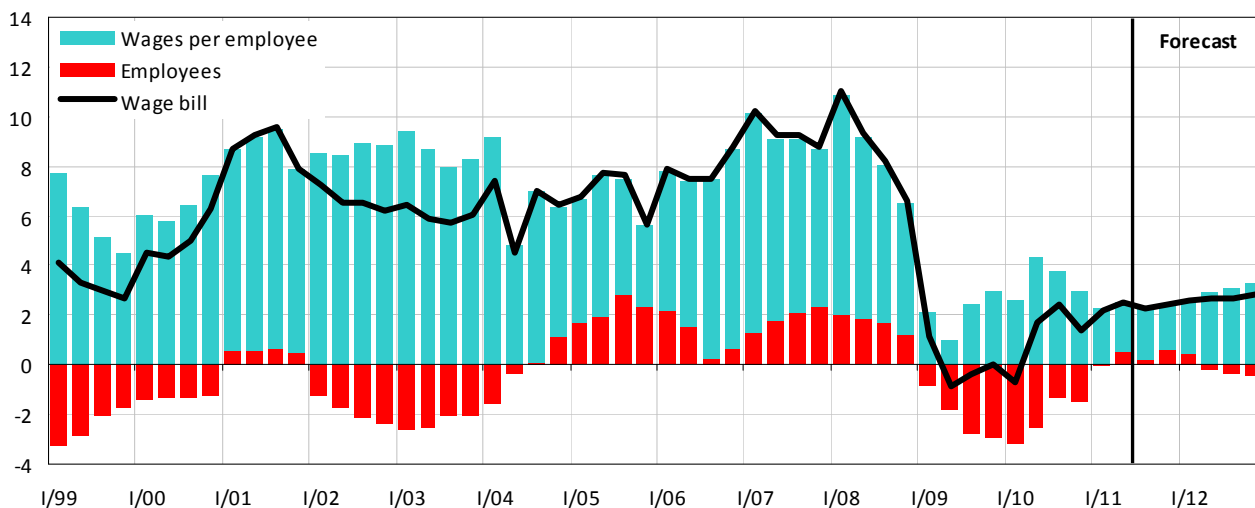
		2003	2004	2005	2006	2007	2008	2009	2010	2011	2012
									Prelim	Forecast	Forecast
<b>Compensation per employee</b>											
– nominal	growth in %	8.2	6.7	4.6	6.6	7.3	5.9	0.5	4.2	2.0	2.6
– real	growth in %	8.1	3.8	2.6	4.0	4.4	-0.4	-0.5	2.7	0.1	-0.6
<b>Average monthly wage <sup>1)</sup></b>											
– nominal	CZK	16 430	17 466	18 344	19 546	20 957	22 592	23 344	23 797	24 300	25 000
	growth in %	5.8	6.3	5.0	6.6	7.2	7.8	3.3	1.9	2.2	2.7
– real	CZK 2005	17 206	17 791	18 344	19 063	19 874	20 147	20 602	20 699	20 800	20 700
	growth in %	5.7	3.4	3.1	3.9	4.3	1.4	2.3	0.5	0.3	-0.5
<b>Labour productivity</b>	growth in %	4.3	5.1	5.0	5.4	4.1	0.8	-2.8	3.4	1.7	1.2
<b>Unit labour costs <sup>2)</sup></b>	growth in %	3.8	1.5	-0.5	1.2	3.1	5.1	3.5	0.8	0.3	1.4
<b>Compensations of employees / GDP</b>	%	43.8	42.7	43.1	43.0	42.9	44.3	44.3	44.7	44.8	44.7

<sup>1)</sup> New time series: average wage is derived from full-time-equivalent employers in the entire economy.

<sup>2)</sup> Ratio of nominal compensation per employee to real productivity of labour.

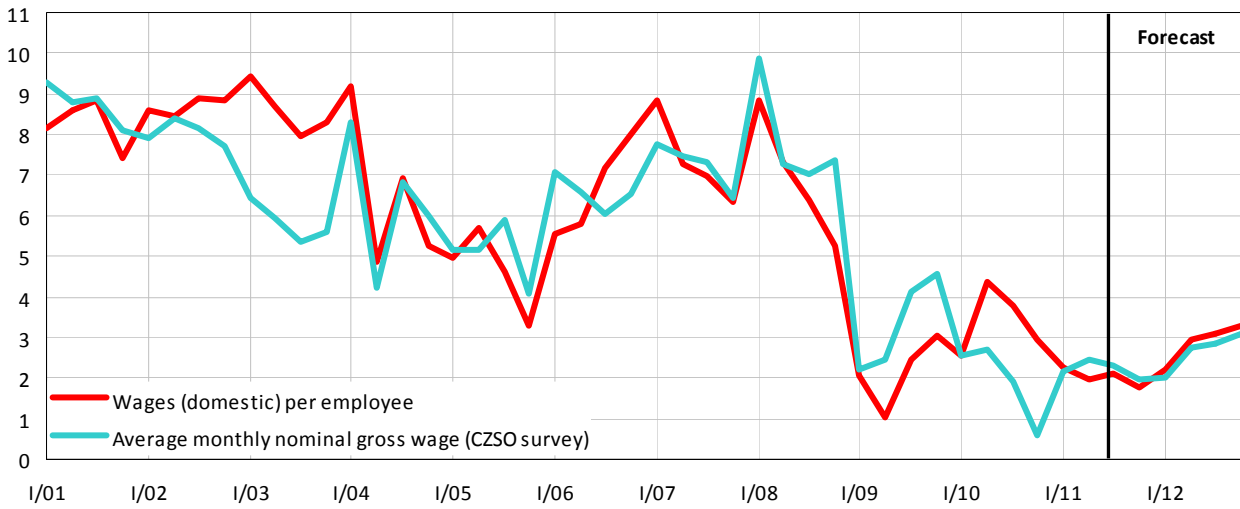
### Graph C.3.5: Wage Bill – nominal, domestic concept

YoY growth rate, in %



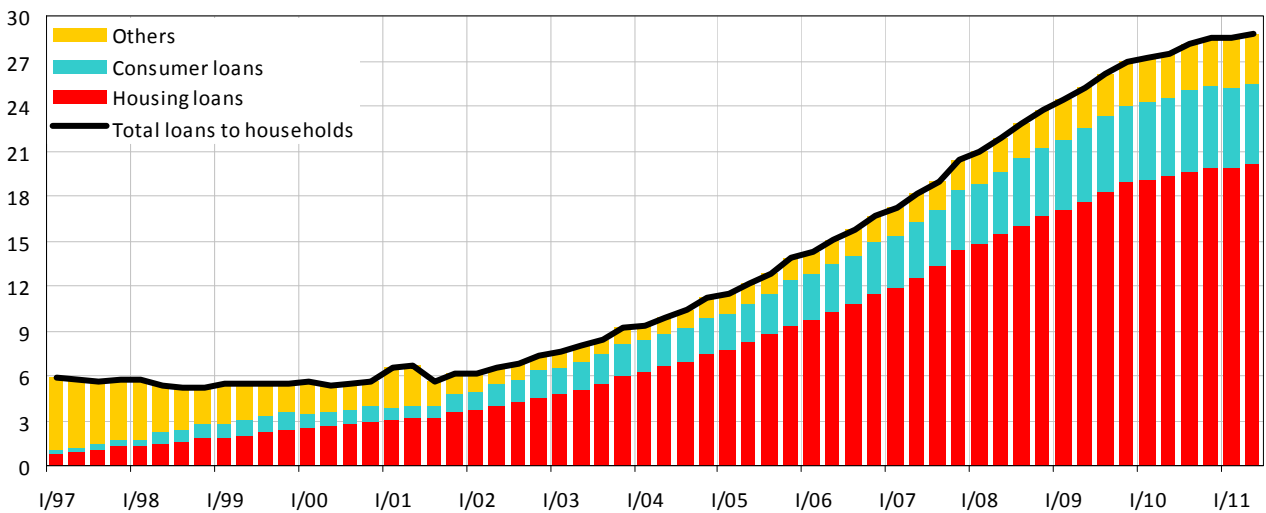
**Graph C.3.6: Average Nominal Wage**

YoY growth rate, in %



**Graph C.3.7: Ratio of Bank Loans to Households to GDP**

yearly moving sums of GDP, in %



**Graph C.3.8: Gross Savings Rate of Households**

in % of disposable income

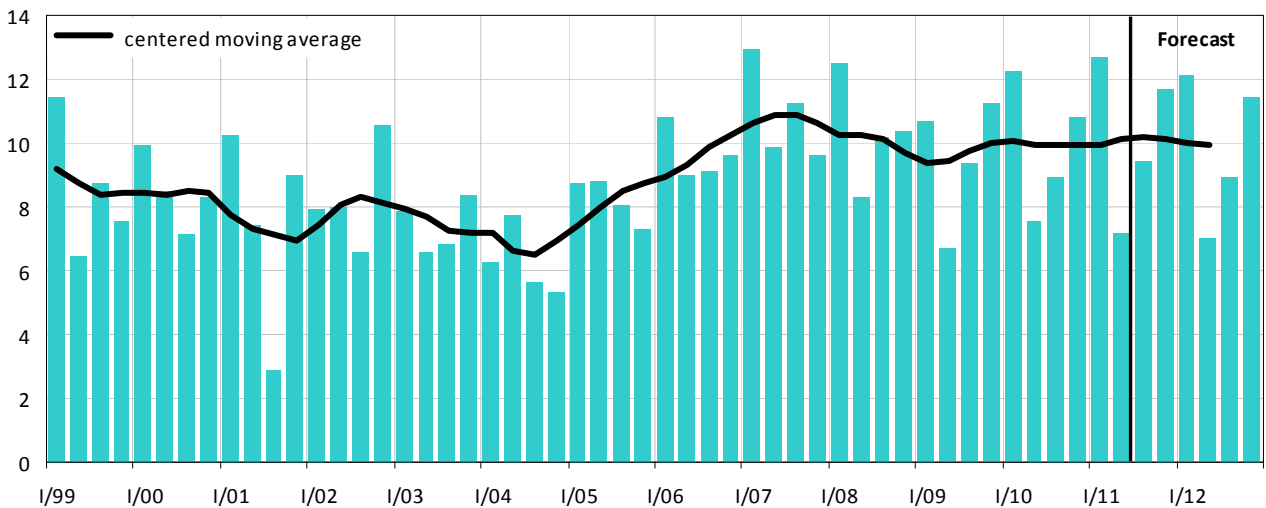


Table C.3.4: **Income and Expenditures of Households – yearly**  
*SNA methodology – national concept*

		2003	2004	2005	2006	2007	2008	2009	2010	2011	2012
									<i>Prelim.</i>	<i>Forecast</i>	<i>Forecast</i>
<b><u>Current income</u></b>											
Compensation of employees	<i>bill.CZK</i>	1120	1186	1273	1387	1511	1614	1594	1636	1673	1710
	<i>growth in %</i>	6.8	5.9	7.3	8.9	8.9	6.8	-1.3	2.6	2.3	2.2
Gross operating surplus and mixed income	<i>bill.CZK</i>	425	449	446	470	505	543	495	488	487	491
	<i>growth in %</i>	7.5	5.7	-0.6	5.4	7.5	7.5	-8.8	-1.4	-0.3	1.0
Property income received	<i>bill.CZK</i>	97	109	120	133	158	151	122	127	128	132
	<i>growth in %</i>	-1.1	12.7	9.6	11.2	18.5	-4.2	-19.5	4.7	0.6	3.0
Social benefits not-in-kind	<i>bill.CZK</i>	324	369	386	417	466	488	527	534	546	554
	<i>growth in %</i>	3.6	.	4.6	8.1	11.8	4.5	8.1	1.4	2.2	1.4
Other current transfers received	<i>bill.CZK</i>	91	93	103	113	122	137	144	146	146	153
	<i>growth in %</i>	6.8	2.9	10.1	9.8	8.4	12.2	4.8	1.9	-0.1	5.0
<b><u>Current expenditure</u></b>											
Property income paid	<i>bill.CZK</i>	19	21	20	25	29	33	22	19	16	16
	<i>growth in %</i>	49.0	12.4	-5.3	22.3	19.5	12.5	-34.3	-13.6	-16.6	0.0
Curr. taxes on income and property	<i>bill.CZK</i>	128	138	140	141	157	140	135	136	137	138
	<i>growth in %</i>	11.9	7.6	1.7	0.7	10.9	-10.8	-3.6	0.9	0.8	0.5
Social contributions	<i>bill.CZK</i>	408	474	507	561	615	634	596	619	635	648
	<i>growth in %</i>	6.7	.	7.1	10.6	9.5	3.2	-6.1	3.9	2.6	2.0
Other current transfers paid	<i>bill.CZK</i>	93	100	109	118	129	141	150	147	145	145
	<i>growth in %</i>	13.7	7.2	9.2	8.6	9.3	9.1	6.7	-2.1	-1.7	0.0
Gross disposable income	<i>bill.CZK</i>	1409	1474	1551	1675	1833	1985	1979	2011	2047	2094
	<i>growth in %</i>	4.5	4.6	5.3	8.0	9.4	8.3	-0.3	1.6	1.8	2.3
Final consumption	<i>bill.CZK</i>	1317	1399	1443	1537	1660	1804	1804	1828	1854	1904
	<i>growth in %</i>	5.6	6.2	3.1	6.6	8.0	8.7	0.0	1.3	1.4	2.7
Change in share in pension funds	<i>bill.CZK</i>	13	17	19	23	26	24	14	15	16	17
Gross savings	<i>bill.CZK</i>	105	92	128	161	200	205	189	199	210	207
Capital transfers (income (-) / expenditure (+))	<i>bill.CZK</i>	-21	-23	-25	-23	-23	-23	-23	-27	-29	-18
Gross capital formation	<i>bill.CZK</i>	122	132	136	154	191	191	197	199	193	185
	<i>growth in %</i>	-5.1	7.8	2.6	13.5	24.2	-0.2	3.5	0.6	-2.8	-4.0
Change in financial assets and liab.	<i>bill.CZK</i>	6	-18	20	30	31	37	14	27	45	40
Real disposable income	<i>growth in %</i>	4.4	1.8	3.3	5.3	6.4	1.8	-1.3	0.2	-0.1	-0.9
Gross savings rate	%	7.4	6.2	8.2	9.6	10.9	10.3	9.5	9.9	10.3	9.9

Note: Government payments to social security systems for non-active population have been imputed to social benefits and social security contributions since 2004.