

Tables and Graphs:

C.1 Economic Output

Sources: CZSO, MoF estimates

Table C.1.1: Real GDP by Type of Expenditure – yearly
chained volumes, reference year 2005

		2007	2008	2009	2010	2011	2012	2013	2014	2015	2016
						Prelim.	Estimate	Forecast	Forecast	Outlook	Outlook
Gross domestic product	<i>bill. CZK 2005</i>	3526	3635	3471	3558	3625	3584	3589	3639	3727	3824
	<i>growth in %</i>	5.7	3.1	-4.5	2.5	1.9	-1.1	0.1	1.4	2.4	2.6
Private consumption exp.¹⁾	<i>bill. CZK 2005</i>	1673	1720	1724	1741	1753	1701	1690	1705	1741	1784
	<i>growth in %</i>	4.2	2.8	0.2	1.0	0.7	-3.0	-0.7	0.9	2.1	2.5
Government consumption exp.	<i>bill. CZK 2005</i>	666	674	701	704	687	680	674	668	672	674
	<i>growth in %</i>	0.4	1.2	4.0	0.5	-2.5	-0.9	-1.0	-0.9	0.7	0.3
Gross capital formation	<i>bill. CZK 2005</i>	1051	1071	855	904	907	877	878	906	937	967
	<i>growth in %</i>	15.5	1.9	-20.2	5.8	0.3	-3.3	0.1	3.2	3.5	3.2
– Gross fixed capital formation	<i>bill. CZK 2005</i>	964	1004	893	901	894	888	888	900	923	952
	<i>growth in %</i>	13.2	4.1	-11.0	1.0	-0.7	-0.8	0.1	1.3	2.6	3.1
– Change in stocks and valuables	<i>bill. CZK 2005</i>	87	68	-38	3	12	-11	-10	6	14	15
Exports of goods and services	<i>bill. CZK 2005</i>	2541	2642	2354	2719	2975	3109	3201	3328	3490	3678
	<i>growth in %</i>	11.2	4.0	-10.9	15.5	9.4	4.5	3.0	4.0	4.9	5.4
Imports of goods and services	<i>bill. CZK 2005</i>	2402	2467	2169	2511	2680	2753	2816	2923	3060	3217
	<i>growth in %</i>	12.8	2.7	-12.1	15.8	6.7	2.7	2.3	3.8	4.7	5.1
Gross domestic exp.	<i>bill. CZK 2005</i>	3390	3465	3288	3357	3353	3265	3247	3283	3353	3428
	<i>growth in %</i>	6.6	2.2	-5.1	2.1	-0.1	-2.6	-0.6	1.1	2.1	2.2
Methodological discrepancy²⁾	<i>bill. CZK 2005</i>	-3	-6	7	0	-17	-30	-37	-45	-53	-63
Real gross domestic income	<i>bill. CZK 2005</i>	3488	3562	3441	3481	3506	3452	3440	3480	3565	3663
	<i>growth in %</i>	6.3	2.1	-3.4	1.2	0.7	-1.5	-0.3	1.1	2.5	2.7
Contribution to GDP growth³⁾											
– Gross domestic expenditure	<i>percent. points</i>	6.4	2.2	-5.0	2.0	-0.1	-2.5	-0.5	1.0	2.0	2.1
– consumption	<i>percent. points</i>	2.1	1.6	0.9	0.6	-0.2	-1.7	-0.5	0.3	1.2	1.3
– household expenditure	<i>percent. points</i>	2.1	1.4	0.1	0.5	0.4	-1.5	-0.3	0.5	1.1	1.3
– government expenditure	<i>percent. points</i>	0.1	0.2	0.8	0.1	-0.5	-0.2	-0.2	-0.2	0.1	0.1
– gross capital formation	<i>percent. points</i>	4.3	0.6	-5.9	1.4	0.1	-0.8	0.0	0.8	0.8	0.8
– gross fixed capital formation	<i>percent. points</i>	3.4	1.1	-3.0	0.2	-0.2	-0.2	0.0	0.3	0.6	0.7
– change in stocks	<i>percent. points</i>	0.9	-0.5	-2.9	1.2	0.2	-0.6	0.0	0.4	0.2	0.0
– Foreign balance	<i>percent. points</i>	-0.7	0.9	0.5	0.5	2.0	1.4	0.7	0.3	0.4	0.5
– external balance of goods	<i>percent. points</i>	-1.1	0.5	0.5	0.4	2.3	1.9	1.1	0.6	0.4	0.4
– external balance of services	<i>percent. points</i>	0.4	0.4	0.0	0.1	-0.3	-0.6	-0.4	-0.2	0.0	0.1

¹⁾ The consumption of non-profit institutions serving households (NPISH) is included in the private consumption.

²⁾ Deterministic impact of using prices and structure of the previous year for calculation of y-o-y growth.

³⁾ Calculated on the basis of prices and structure of the previous year with perfectly additive contributions.

Table C.1.2: **Real GDP by Type of Expenditure – quarterly**
chained volumes, reference year 2005

		2012				2013			
		Q1 <i>Prelim.</i>	Q2 <i>Prelim.</i>	Q3 <i>Prelim.</i>	Q4 <i>Estimate</i>	Q1 <i>Forecast</i>	Q2 <i>Forecast</i>	Q3 <i>Forecast</i>	Q4 <i>Forecast</i>
Gross domestic product	<i>bill. CZK 2005</i>	852	902	902	928	841	901	914	933
	<i>growth in %</i>	-0.2	-1.6	-1.6	-1.1	-1.3	-0.1	1.3	0.5
	<i>growth in % ¹⁾</i>	-0.5	-1.0	-1.3	-1.3	-0.7	-0.1	0.4	0.8
	<i>quart.growth in % ¹⁾</i>	-0.6	-0.4	-0.3	0.0	0.1	0.2	0.2	0.3
Private consumption exp.	<i>bill. CZK 2005</i>	406	423	433	440	401	420	430	439
	<i>growth in %</i>	-2.8	-3.1	-2.4	-3.5	-1.2	-0.9	-0.5	-0.2
Government consumption exp.	<i>bill. CZK 2005</i>	160	167	166	187	159	166	164	184
	<i>growth in %</i>	-1.9	-1.6	0.1	-0.3	-0.2	-0.3	-1.4	-1.8
Gross capital formation	<i>bill. CZK 2005</i>	189	228	227	232	174	227	241	236
	<i>growth in %</i>	-1.8	-1.4	-9.9	0.7	-8.2	-0.6	6.0	1.7
– Gross fixed capital formation	<i>bill. CZK 2005</i>	200	221	223	244	200	220	223	245
	<i>growth in %</i>	1.7	0.4	-2.9	-1.8	0.1	-0.3	0.1	0.3
– Change in stocks and valuables	<i>bill. CZK 2005</i>	-10	7	5	-12	-26	7	18	-9
Exports of goods and services	<i>bill. CZK 2005</i>	787	782	756	785	812	803	776	810
	<i>growth in %</i>	7.4	3.2	4.0	3.4	3.2	2.7	2.7	3.2
Imports of goods and services	<i>bill. CZK 2005</i>	679	690	674	711	693	705	690	729
	<i>growth in %</i>	5.1	2.6	0.7	2.7	2.0	2.1	2.4	2.6
Methodological discrepancy	<i>bill. CZK 2005</i>	-11	-8	-6	-5	-12	-10	-8	-7
Real gross domestic income	<i>bill. CZK 2005</i>	818	868	870	896	802	863	878	898
	<i>growth in %</i>	-0.4	-2.0	-2.0	-1.6	-2.0	-0.6	0.9	0.2

¹⁾ From seasonally and working day adjusted data

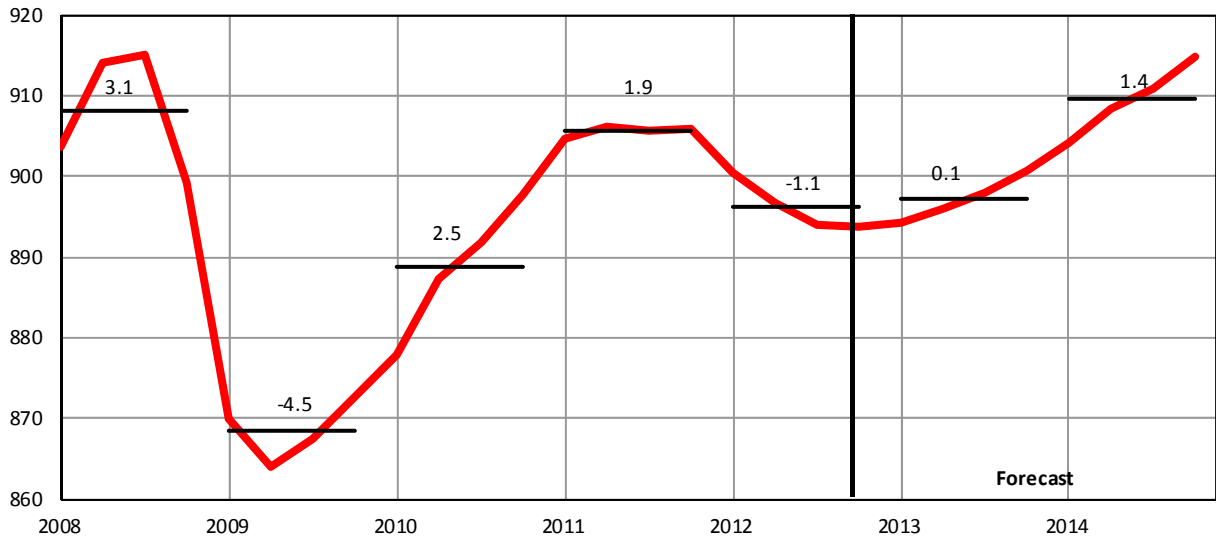
Table C.1.3: Nominal GDP by Type of Expenditure – yearly

		2007	2008	2009	2010	2011	2012	2013	2014	2015	2016
						Prelim.	Estimate	Forecast	Forecast	Outlook	Outlook
Gross domestic product	<i>bill. CZK</i>	3663	3848	3759	3800	3841	3840	3863	3939	4086	4238
	<i>growth in %</i>	9.2	5.1	-2.3	1.1	1.1	0.0	0.6	2.0	3.7	3.7
Private consumption	<i>bill. CZK</i>	1748	1883	1902	1926	1950	1927	1932	1970	2044	2119
	<i>growth in %</i>	7.3	7.8	1.0	1.3	1.2	-1.2	0.3	2.0	3.8	3.6
Government consumption	<i>bill. CZK</i>	726	759	809	807	793	795	798	794	811	820
	<i>growth in %</i>	4.6	4.6	6.6	-0.2	-1.8	0.2	0.4	-0.5	2.1	1.2
Gross capital formation	<i>bill. CZK</i>	1092	1114	896	946	944	920	927	963	1001	1041
	<i>growth in %</i>	17.6	2.0	-19.5	5.5	-0.3	-2.5	0.8	3.9	3.9	4.0
– Gross fixed capital formation	<i>bill. CZK</i>	990	1031	926	933	917	919	929	949	981	1019
	<i>growth in %</i>	15.0	4.2	-10.2	0.7	-1.6	0.2	1.1	2.1	3.4	3.8
– Change in stocks and valuables	<i>bill. CZK</i>	102	83	-30	14	26	1	-2	14	20	23
External balance	<i>bill. CZK</i>	97	92	152	120	155	198	206	212	230	258
– Exports of goods and services	<i>bill. CZK</i>	2498	2480	2216	2525	2787	3004	3105	3245	3427	3634
	<i>growth in %</i>	11.3	-0.7	-10.7	13.9	10.4	7.8	3.3	4.5	5.6	6.1
– Imports of goods and services	<i>bill. CZK</i>	2401	2388	2064	2406	2632	2806	2899	3033	3196	3376
	<i>growth in %</i>	12.0	-0.5	-13.6	16.5	9.4	6.6	3.3	4.6	5.4	5.6
Gross national income	<i>bill. CZK</i>	3401	3668	3508	3515	3572	3599	3615	3681	3799	3923
	<i>growth in %</i>	6.9	7.8	-4.3	0.2	1.6	0.7	0.5	1.8	3.2	3.2
Primary income balance	<i>bill. CZK</i>	-261	-180	-251	-285	-269	-241	-248	-259	-287	-315

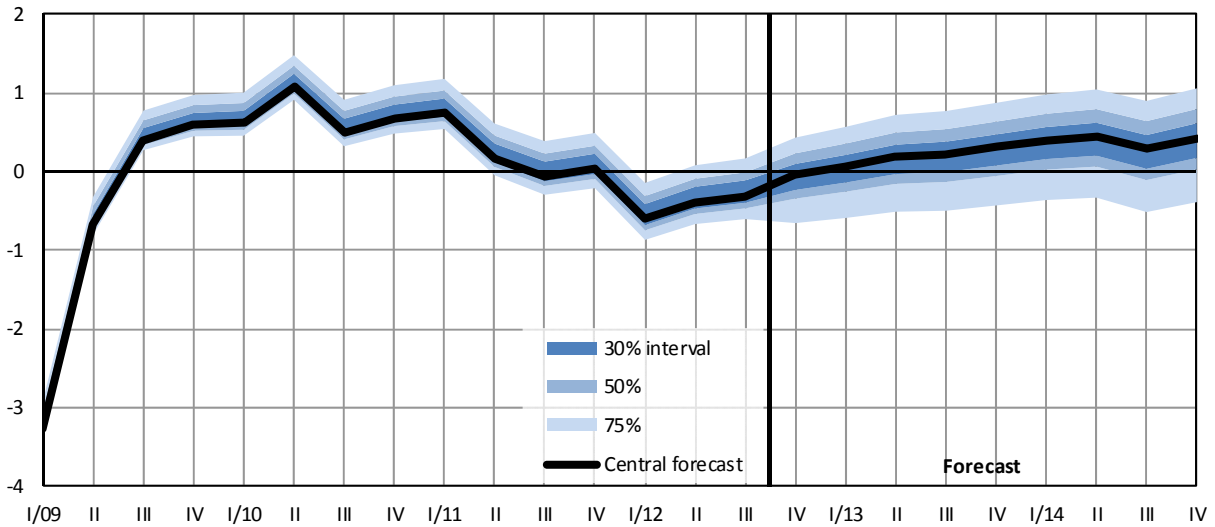
Table C.1.4: Nominal GDP by Type of Expenditure – quarterly

		2012				2013			
		Q1	Q2	Q3	Q4	Q1	Q2	Q3	Q4
		<i>Prelim.</i>	<i>Prelim.</i>	<i>Prelim.</i>	<i>Estimate</i>	<i>Forecast</i>	<i>Forecast</i>	<i>Forecast</i>	<i>Forecast</i>
Gross domestic product	<i>bill. CZK</i>	903	965	966	1006	893	966	985	1020
	<i>growth in %</i>	1.4	-0.3	-0.7	-0.5	-1.2	0.1	1.9	1.4
Private consumption	<i>bill. CZK</i>	458	480	491	498	455	480	494	503
	<i>growth in %</i>	-0.7	-1.2	-0.7	-2.1	-0.6	-0.1	0.7	1.1
Government consumption	<i>bill. CZK</i>	182	193	192	228	184	195	193	227
	<i>growth in %</i>	0.0	-0.3	0.7	0.5	1.0	1.0	0.1	-0.3
Gross capital formation	<i>bill. CZK</i>	198	240	239	244	185	238	254	250
	<i>growth in %</i>	-1.1	-0.2	-9.3	1.5	-6.7	-0.6	6.5	2.6
– Gross fixed capital formation	<i>bill. CZK</i>	206	229	230	254	208	230	233	258
	<i>growth in %</i>	2.3	1.7	-1.9	-0.8	1.0	0.6	1.3	1.4
– Change in stocks and valuables	<i>bill. CZK</i>	-8	11	8	-11	-23	8	21	-8
External balance	<i>bill. CZK</i>	66	52	44	37	70	53	44	40
– Exports of goods and services	<i>bill. CZK</i>	754	756	729	766	784	779	751	792
	<i>growth in %</i>	11.4	7.3	7.5	5.3	3.9	3.0	3.0	3.5
– Imports of goods and services	<i>bill. CZK</i>	688	704	685	729	714	726	706	753
	<i>growth in %</i>	9.4	7.2	4.7	5.3	3.7	3.1	3.2	3.2

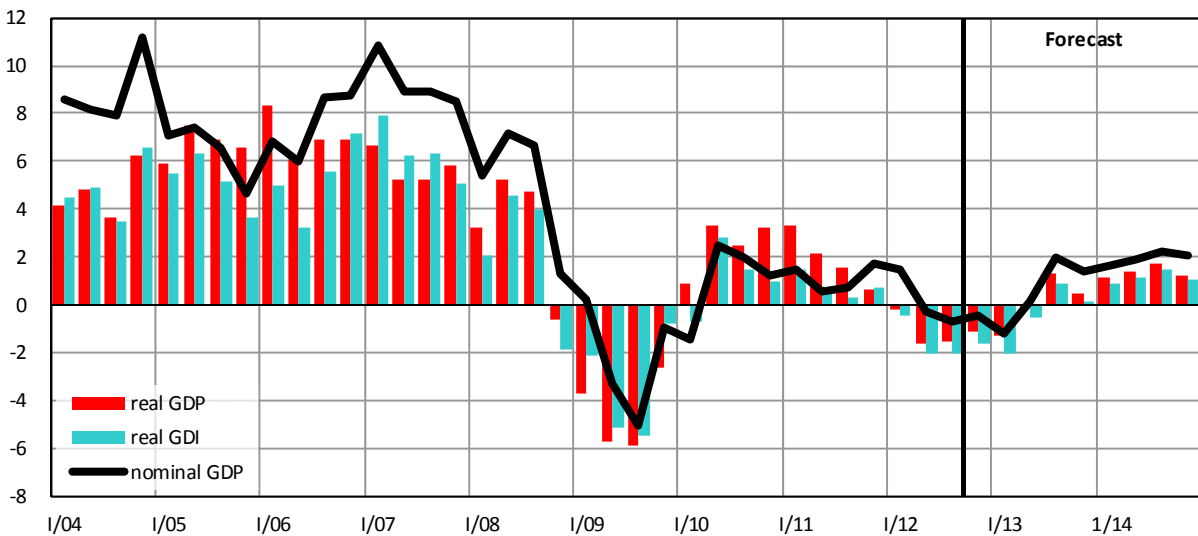
Graph C.1.1: Gross Domestic Product (real)
 chained volumes, bill. CZK in const. prices of 2005, seasonally adjusted



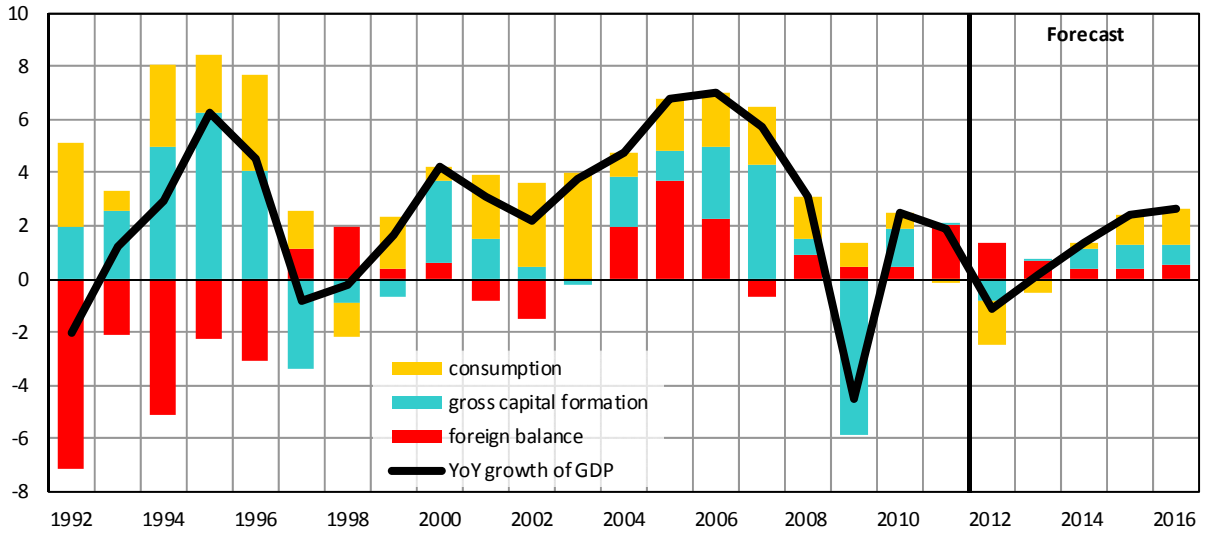
Graph C.1.2: Gross Domestic Product (real)
 QoQ growth rate, in %, seasonally adjusted



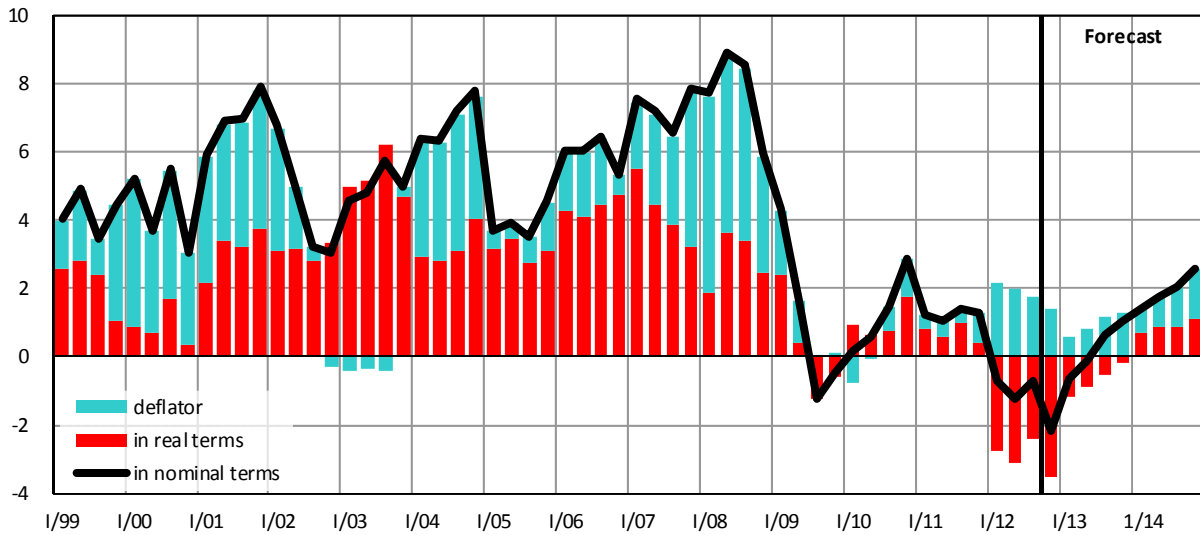
Graph C.1.3: Gross Domestic Product and Real Gross Domestic Income
 YoY growth rate, in %



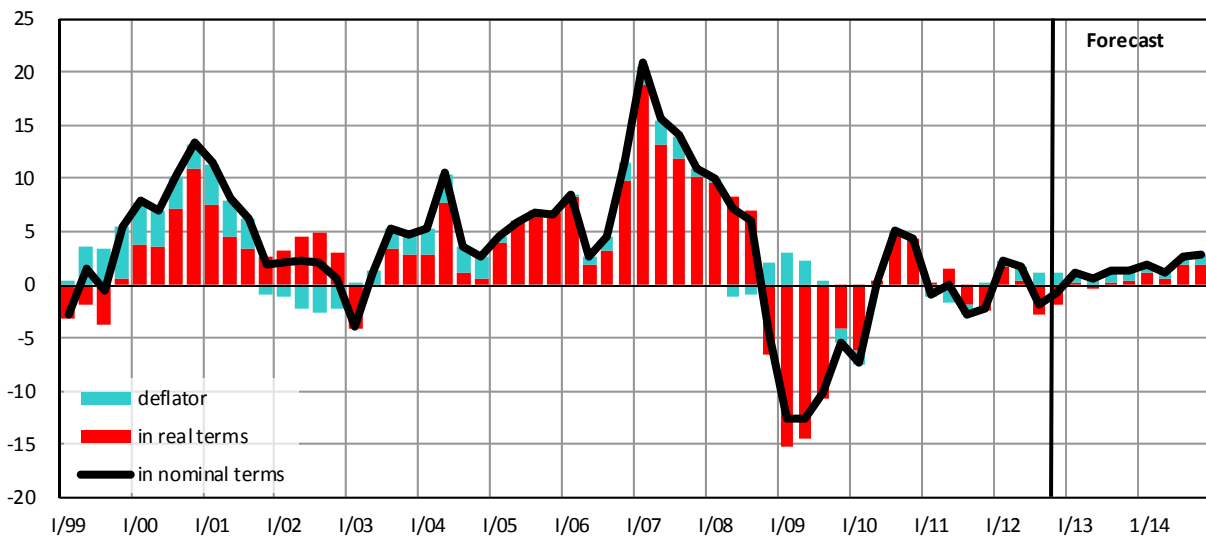
Graph C.1.4: Gross Domestic Product – contributions to YoY growth
in constant prices, decomposition of the YoY growth, in percentage points



Graph C.1.5: Private Consumption (incl. NPISH)
YoY growth rate, in %

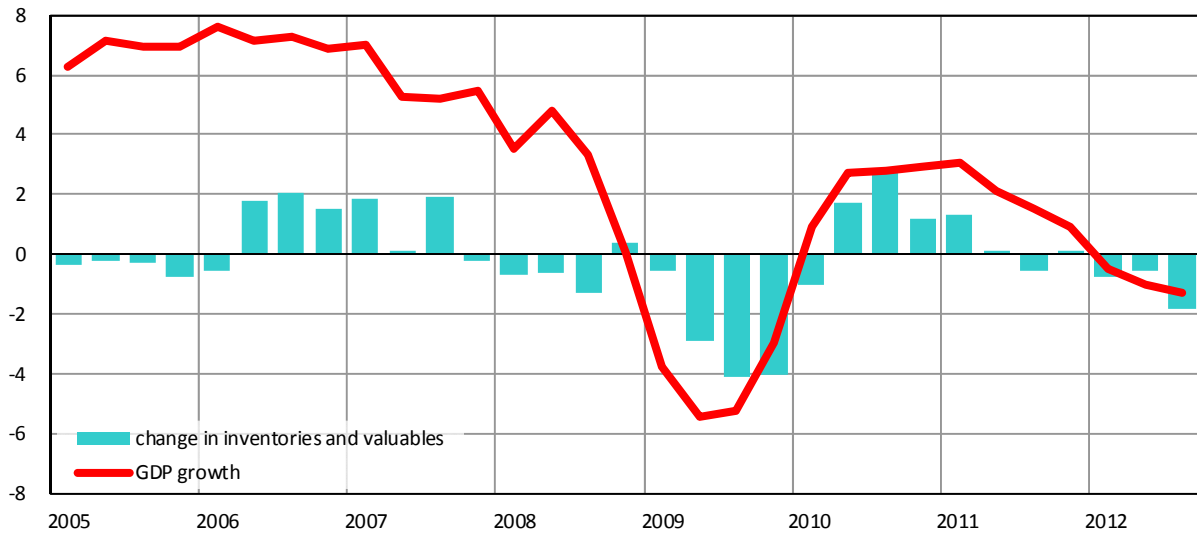


Graph C.1.6: Gross Fixed Capital Formation
YoY growth rate, in %



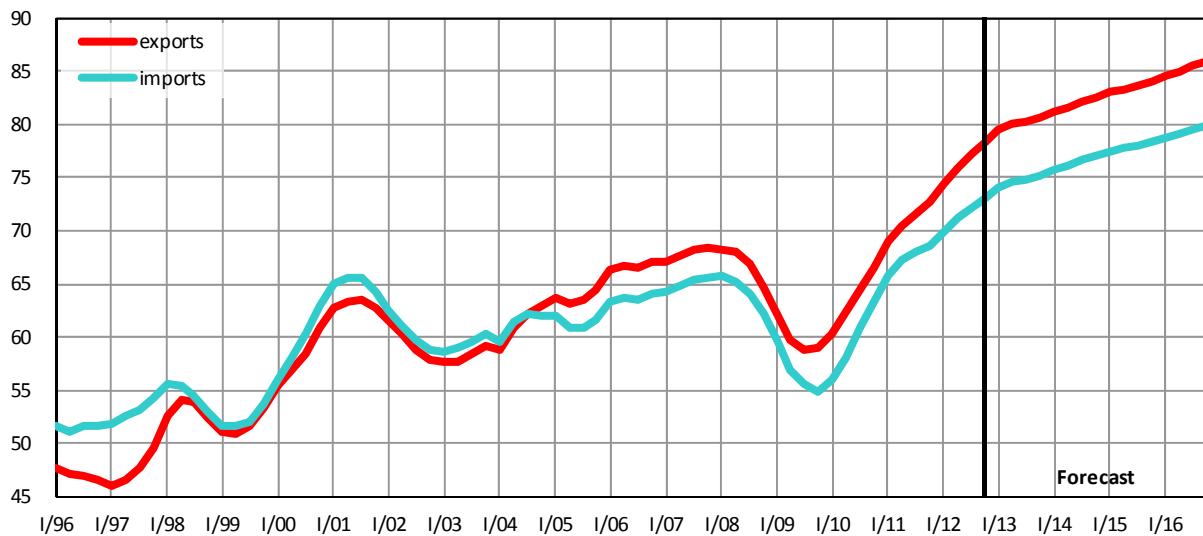
Graph C.1.7: Change in Inventories and Valuables (real)

seasonally adjusted, contributions to YoY growth of GDP in p.p.



Graph C.1.8: Ratio of Exports and Imports of Goods and Services to GDP (nominal)

yearly moving sums, in %



Graph C.1.9: GDP – Income Structure

yearly moving sums, in %

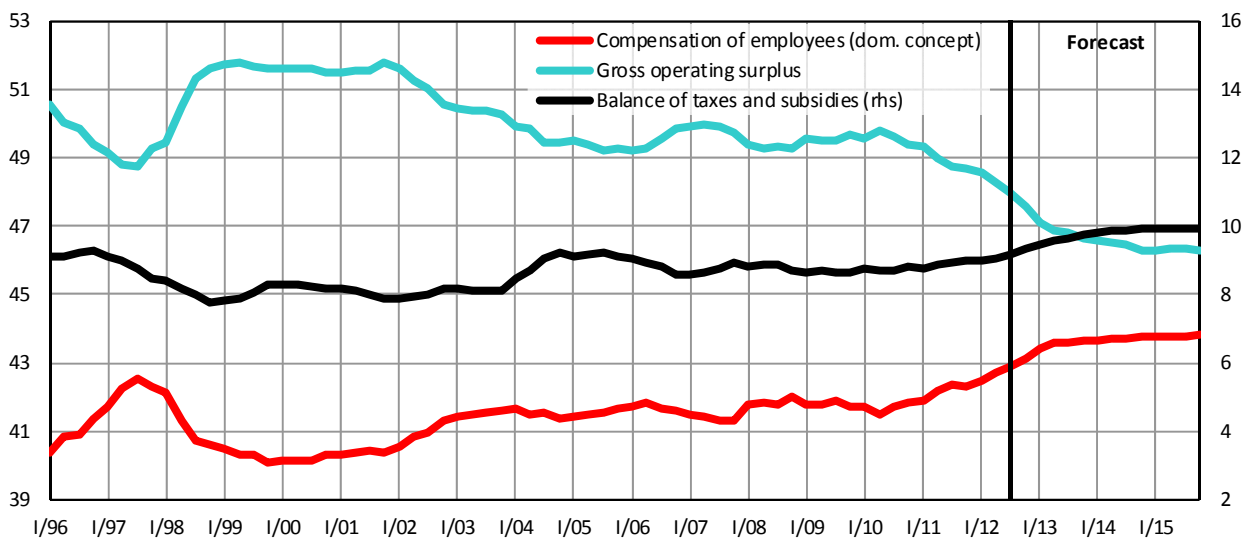


Table C.1.5: GDP by Type of Income – yearly

		2007	2008	2009	2010	2011	2012	2013	2014	2015	2016
							<i>Estimate</i>	<i>Forecast</i>	<i>Forecast</i>	<i>Outlook</i>	<i>Outlook</i>
GDP	<i>bill. CZK</i>	3663	3848	3759	3800	3841	3840	3863	3939	4086	4238
	<i>growth in %</i>	9.2	5.1	-2.3	1.1	1.1	0.0	0.6	2.0	3.7	3.7
Balance of taxes and subsidies	<i>bill. CZK</i>	327	335	325	334	345	358	375	392	404	417
	<i>growth in %</i>	13.9	2.5	-3.1	2.8	3.1	3.9	4.9	4.4	3.2	3.2
– Taxes on production and imports	<i>bill. CZK</i>	407	419	425	434	453	466	485	502	516	530
	<i>growth in %</i>	12.0	2.9	1.4	2.1	4.3	3.0	4.0	3.6	2.7	2.7
– Subsidies on production	<i>bill. CZK</i>	80	84	100	100	108	108	109	110	111	113
	<i>growth in %</i>	4.8	4.4	19.5	-0.4	8.6	0.1	1.0	1.0	1.0	1.0
Compensation of employees	<i>bill. CZK</i>	1513	1617	1567	1589	1626	1656	1687	1724	1791	1864
	<i>growth in %</i>	8.6	6.8	-3.0	1.4	2.3	1.9	1.8	2.2	3.9	4.1
– Wages and salaries	<i>bill. CZK</i>	1140	1226	1201	1209	1235	1257	1281	1326	1377	1432
	<i>growth in %</i>	8.3	7.5	-2.1	0.7	2.2	1.7	1.9	3.5	3.8	4.0
– Social security contributions	<i>bill. CZK</i>	373	390	367	380	391	400	406	398	414	431
	<i>growth in %</i>	9.4	4.7	-6.1	3.7	2.8	2.3	1.5	-2.0	4.1	4.2
Gross operating surplus	<i>bill. CZK</i>	1822	1896	1866	1876	1871	1825	1801	1824	1891	1957
	<i>growth in %</i>	9.0	4.1	-1.6	0.5	-0.3	-2.4	-1.3	1.3	3.7	3.5
– Consumption of capital	<i>bill. CZK</i>	644	680	710	720	733	755	770	787	811	835
	<i>growth in %</i>	6.8	5.6	4.4	1.5	1.8	3.0	2.0	2.2	3.0	3.0
– Net operating surplus	<i>bill. CZK</i>	1178	1216	1156	1156	1138	1070	1031	1036	1080	1122
	<i>growth in %</i>	10.3	3.2	-4.9	-0.1	-1.6	-5.9	-3.7	0.6	4.2	3.8

Table C.1.6: GDP by Type of Income – quarterly

		2012				2013			
		Q1	Q2	Q3	Q4	Q1	Q2	Q3	Q4
		<i>Prelim.</i>	<i>Prelim.</i>	<i>Prelim.</i>	<i>Estimate</i>	<i>Forecast</i>	<i>Forecast</i>	<i>Forecast</i>	<i>Forecast</i>
GDP	<i>bill. CZK</i>	903	965	966	1006	893	966	985	1020
	<i>growth in %</i>	1.4	-0.3	-0.7	-0.5	-1.2	0.1	1.9	1.4
Balance of taxes and subsidies	<i>bill. CZK</i>	77	93	102	86	81	98	107	91
	<i>growth in %</i>	1.1	2.3	5.8	6.0	5.0	4.7	4.5	5.4
Compensation of employees	<i>bill. CZK</i>	399	409	407	442	405	416	414	451
	<i>growth in %</i>	3.1	1.5	0.9	1.9	1.7	1.8	1.6	2.2
– Wages and salaries	<i>bill. CZK</i>	301	310	309	337	306	316	315	345
	<i>growth in %</i>	3.0	1.4	0.6	1.9	1.7	1.8	2.0	2.2
– Social security contributions	<i>bill. CZK</i>	98	99	98	104	99	101	99	107
	<i>growth in %</i>	3.4	1.8	2.2	1.9	1.7	1.8	0.4	2.2
Gross operating surplus	<i>bill. CZK</i>	428	462	457	478	407	452	464	478
	<i>growth in %</i>	0.0	-2.3	-3.4	-3.7	-4.9	-2.3	1.6	-0.1